

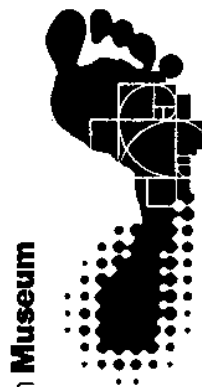
SOUTH AUSTRALIA

ANNUAL REPORT

OF THE

**SOUTH AUSTRALIAN
MUSEUM BOARD**

2009-2010



South Australian Museum



Government
of South Australia

August 2010

South Australian Museum
North Terrace
Adelaide, South Australia 5000
ABN 39 808 959 302
www.samuseum.sa.gov.au

Director
Telephone +61 (08) 8207 7395

*For copies of this document please
contact:*

Website: www.samuseum.gov.au
Telephone: +61 (08) 8207 7431
Facsimile: +61 (08) 8207 7643

ISSN 0375-1619

North Terrace, Adelaide
South Australia 5000
ABN 39 808 959 302

Telephone +61 8 8207 7500
Facsimile +61 8 8207 7430
www.samuseum.sa.gov.au



Government
of South Australia



South Australian Museum

The Hon. Mike Rann MP,
Minister for the Arts

Dear Minister,

I am pleased to present the Annual Report of the South
Australian Museum Board for the year ending 30 June 2010.

A handwritten signature in blue ink, reading "John Ellice-Flint".

John Ellice-Flint
Chair
Museum Board

**ANNUAL REPORT
of the
SOUTH AUSTRALIAN MUSEUM BOARD
2009-10**

CONTENTS	Page No.
1. ROLE, LEGISLATION, STRUCTURE	4/5.
2. ACHIEVEMENTS AND INITIATIVES	6.
Introduction	
Alignment with SA Strategic Plan Objectives	
Highlights	
-Visitation	
-Exhibitions	
-Touring Exhibitions	
-Staff Achievements and Awards	
Community Engagement	
Official Visits	
Education Services	
Aboriginal Reconciliation	
Science Research	
The Collections	
SA Museum Foundation	
Support Organisations	
-Friends of the South Australian Museum	
-The Waterhouse Club	
Volunteer Support	
Work Experience	
Staff Achievements and Awards	
Commercial Activities	
- Venue Hire	
- Sponsorship & Business Development	
Media	
Greening of Government	
3. PUBLICATIONS – SOUTH AUSTRALIAN MUSEUM STAFF 2009-10	33.
4. STAFF LIST	63.

5.	HUMAN RESOURCES	69.
----	-----------------	-----

6.	OCCUPATIONAL HEALTH, SAFETY AND INJURY MANAGEMENT (OHS&IM)	73.
----	--	-----

7.	FREEDOM OF INFORMATION ACT, 1991 PART 11 SECTION 9(2)	80.
----	---	-----

8.	INDEPENDENT AUDIT REPORT	
----	--------------------------	--

9.	FINANCIAL STATEMENTS	
----	----------------------	--

10.	NOTES TO THE FINANCIAL STATEMENTS	
-----	-----------------------------------	--

ANNUAL REPORT OF THE SOUTH AUSTRALIAN MUSEUM BOARD 2009-10

1. ROLE, LEGISLATION, STRUCTURE

ROLE AND LEGISLATION

The role of management of the South Australian Museum is prescribed under the South Australian Museum Act, 1976-1985.

To increase knowledge and understanding of our natural and cultural heritage: to serve the community by acquiring, preserving, interpreting and presenting to the public, material evidence concerning people and nature; and to provide opportunities for study, education and enjoyment.

The South Australian Museum is a Division of Arts South Australia within the Department of the Premier and Cabinet. The South Australian Museum Board comprises eight people appointed by the Minister. The Board functions as a body corporate.

Members of the Board during 2009-10 were:

Mr John Ellice-Flint – Chair

Mr Paul Ah Chee

Ms Natasha Stott Despoja – commenced September 2009

Ms Noelene Buddle

Dr Sue Carthew

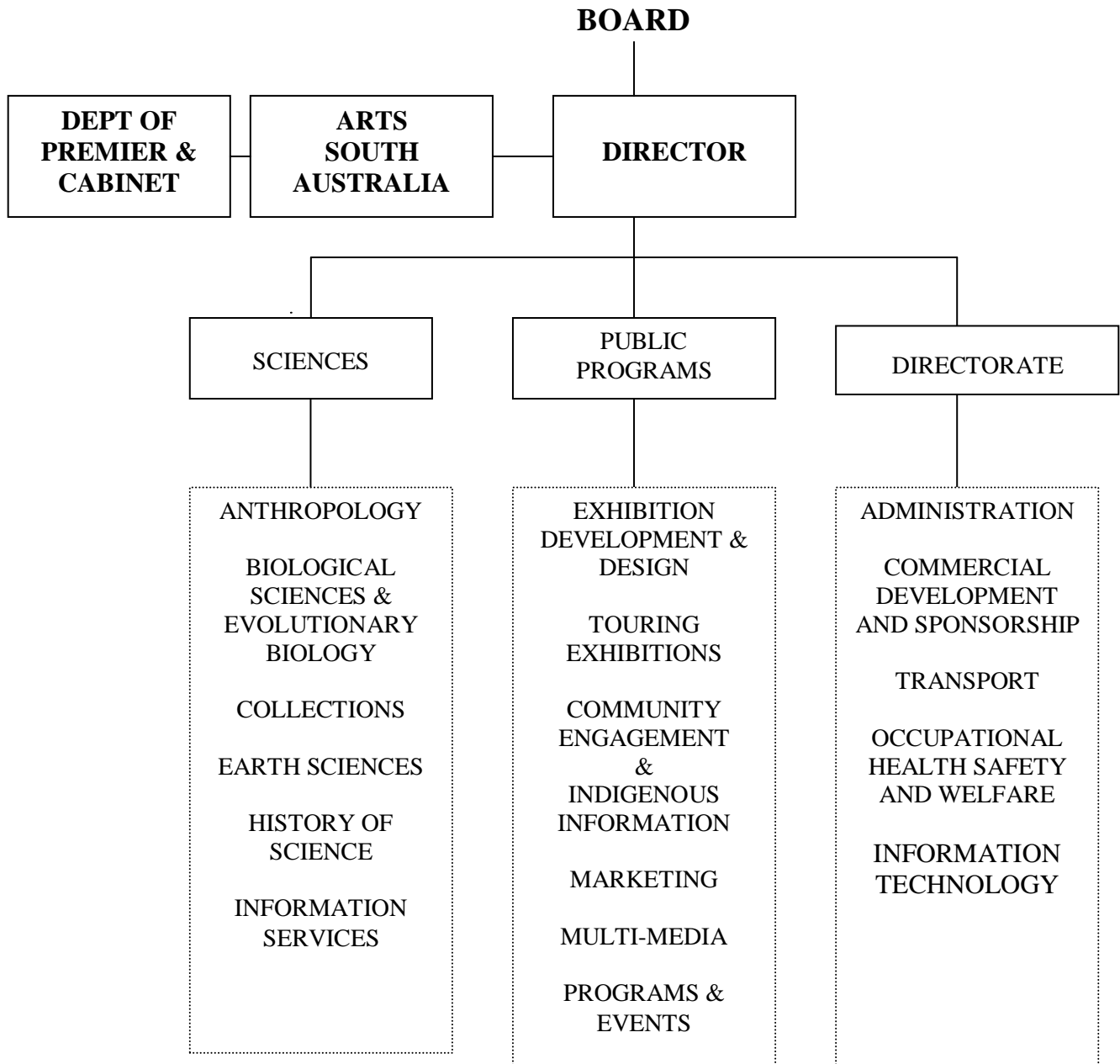
Mr Robert Edwards AO

Ms Elizabeth Perry

Mr Antony Simpson

STRUCTURE

The organisational structure of the South Australian Museum is outlined as follows:



2. ACHIEVEMENTS AND INITIATIVES

INTRODUCTION

As ever, the year has been one of sustained activity and challenge.

The development and adoption of a new strategic plan developed by the Director, Prof Suzanne Miller, in consultation with all major museum stakeholders and embracing all operational activities of the museum has provided a forward template of priorities and focus. In essence, the strategic plan addresses:

- Continuing endeavours to ensure the museum engages with the South Australian community at the broadest level,
- Accessibility to the museum's collections incorporating the latest technologies including digitisation and electronic access,
- Scientific research excellence is maintained and further developed,
- Partnership collaboration occurs with the State's Universities and,
- The museum consistently ensures the optimum utilisation of all available resources.

The adoption of the strategic plan has been reflected in the museum's ongoing diverse public program of exhibitions, events, and activities combined with continuing science research and collections excellence that is reflected in the ongoing success of research grant funding, publications and collection acquisition through ongoing donations.

ALIGNMENT WITH THE SOUTH AUSTRALIAN STRATEGIC PLAN OBJECTIVES

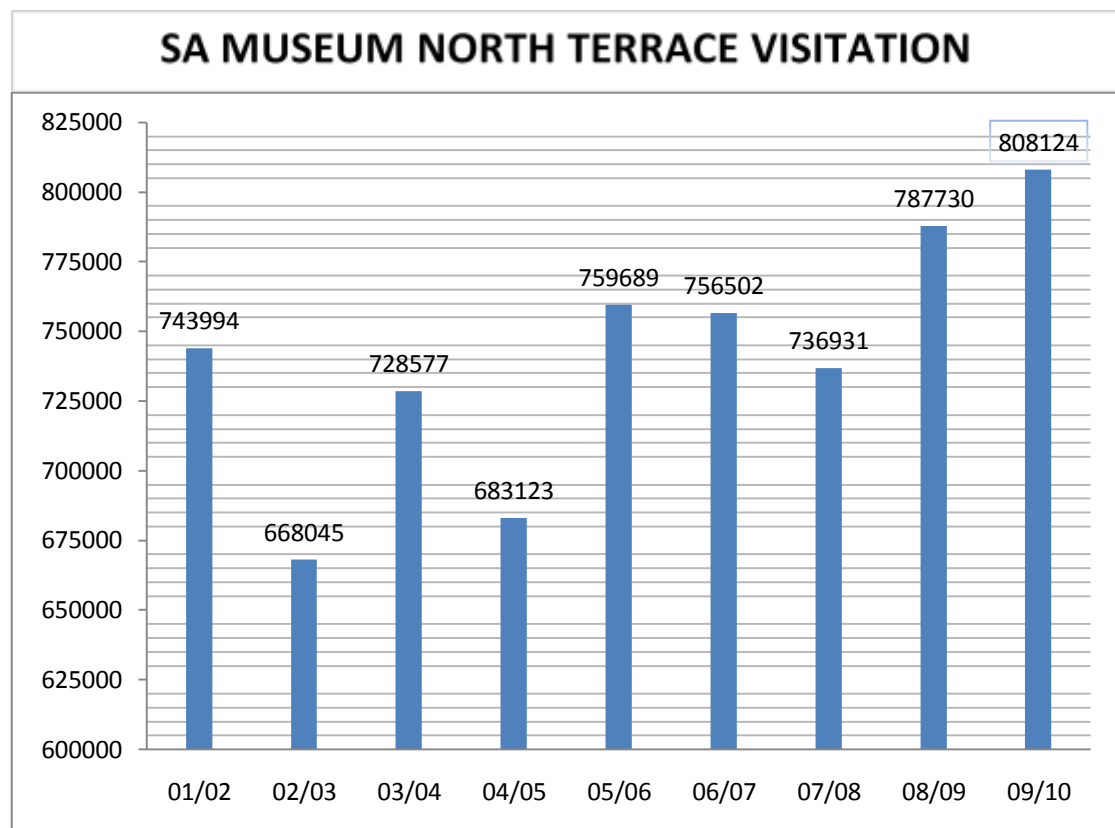
The museum continues to sustain and develop its commitment to key objectives of the South Australian Strategic Plan. In particular:

- Growing prosperity - through scientific research with economic implications and maintaining appropriate links to and promotion of the State's tourism industry.
- Improved well-being - as a key resource in the cultural and scientific life of the State.
- Attaining sustainability - through the museum's endeavours in energy and water conservation and the promotion of sustainability initiatives through its public programs. The new Biodiversity Gallery further incorporates significant messages associated with sustainability.
- Fostering creativity and innovation - in widening its audience participation through its active support for initiatives such as the Waterhouse Natural History Art Prize and the ANZANG Nature photography competition and exhibition.
- Building communities - through its outreach and regional Roadshow programs.
- Expanding opportunity - with its delivery of innovative curriculum related education programs, promotion of science career opportunities and scientific research partnerships with South Australian Universities.

HIGHLIGHTS

Visitation

Again the museum has achieved record levels of visitation for the reporting period. Overall visitation to the museum, its regional events and touring exhibitions for the 2009-10 financial year was 891 357, an improvement of 11.9% on the 2008-09 period. The North Terrace sites have attracted the greatest number of visitation; 808 124 visitors have been recorded for this reporting period, an improvement of 3% on 2008/09. As indicated below this level of visitation is the highest ever recorded by the museum.



A portion of the strong North Terrace visitation number was a direct contribution by school groups from throughout the state. In total 32 660 students visited either the museum or Science Centre at North Terrace, a further 4 244 students experienced the museum as part of the in-classroom Discovery Case program, Travelling Education Service or participation in Regional Roadshows.

Exhibitions travelling from the museum have also been well received by visitors to other institutions. For the reporting period, a total of 78 989 people visited the museum's outward touring exhibitions. Exhibitions toured during the period include; ANZANG Nature Photography (total 28 973 visitors at Western Australian Museum Albany, Geraldton and Fremantle), The Waterhouse Natural History Art Prize 2009 (total 9 168 visitors at National Archives, Canberra) and Australia's Muslim Cameleers: Pioneers of the Inland, 1860s – 1930s (total 40 848 visitors at Museum Victoria – Immigration Museum, Melbourne).

BIODIVERSITY GALLERY

A highlight of the year was the completion of the *South Australian Biodiversity Gallery*. The gallery showcases the incredible diversity of South Australia's fauna from arid regions to deep marine. The gallery has been very well received by visitors.

STAFF ACHIEVEMENTS AND AWARDS

The Board congratulates Mr Steve Riley PSM, former Head of Development and General Manager SA Museum, on being a recipient for the Public Service Medal on 14 June 2010. Mr Riley was awarded the PSM for outstanding public service in the arts, specifically with regards to the South Australian Museum.

The Board also congratulates Mrs Joy Mallett, President of the Friends of the South Australian Museum, on being awarded the Order of Australia Medal for service to the arts through the Friends of the South Australian Museum

During the reporting period, Mr Mark Adams, Researcher, Evolutionary Biology Unit, SA Museum, was appointed as an Affiliate Senior Lecturer at the University of Adelaide and Dr Steve Cooper received the 2009 Titleholder Prize from the School of Earth and Environmental Sciences, the University of Adelaide.

Dr Jim Gehling, Senior Researcher, Palaeontology, was awarded the 2009 Premier of Victoria Literary Award for Science Writing for 'The Rise of Animals: Evolution and Diversification of the Kingdom Animalia'. The Board congratulates Dr Gehling on this significant achievement.

SPECIAL EXHIBITIONS

Waterhouse Natural History Art Prize

18 July until 6 September 2009

Visitation: 10 544

The seventh annual Waterhouse Natural History Art Prize saw Sydney artist Matilda Michell awarded the \$50 000 overall prize for her six-panel painting *Fish*. The exhibition of 101 artworks was selected from 873 entries, the largest number ever submitted.

ANZANG Nature Photography

2 October until 22 November 2009

Visitation: 4 644

A photographic competition focusing on the bioregion of Australia, New Zealand, Antarctica and New Guinea, ANZANG Nature Photography came under the management of the South Australian Museum from 2009. This exhibition featured the 89 best photographs from the 1 500 submitted to the annual competition. Nick Moir's photograph *Temora bushfire* won the overall prize for its depiction of the destructive essence of Australian bush fires.

Wildlife of Gondwana

19 December 2009 until 14 February 2010

Visitation: 10 238

A display of the fossil record from the Great Southern Super continent, Gondwana; *Wildlife of Gondwana* featured material from 3.8 billion years ago to the present. The information-rich exhibition from Monash Science Centre featured a significant number of actual and cast specimens from Australian and South American sources.

Tjukurpa Pulkatjara

4 March until 14 March 2010

Visitation: 6 791

An exhibition of contemporary art from the Anangu Pitjantjatjara Yankunytjatjara Lands and the Ngaanyatjarra Lands, *Tjukurpa Pulkatjara* epitomised the highest standard of Australian Indigenous art while highlighting the importance of provenance and ethical acquisition of works. Organised by Angangu Arts and Culture Aboriginal Corporation in conjunction with the museum.

Palaeontology Week

18 March until March 2010

Visitation: 9 886

The Special Exhibition Gallery once again became the hub for activities and displays associated with the annual Palaeontology Week. Greater detail is provided in the 'Community Engagement' report of this document.

Wildlife Photographer of the Year

5 May – 20 June 2010

Visitation: 5 191

An exhibition developed from the internationally renowned *Wildlife Photographer of the Year* competition, owned by the Natural History Museum in London and BBC Wildlife Magazine. From more than 43 000 entries submitted, the exhibition featured the best 95 photographs.

**AUSTRALIAN ABORIGINAL CULTURES GALLERY –
TEMPORARY EXHIBITION GALLERY**

Nganampa Mantaku Mapany : A Map of Our Land

3 April - 23 May 2010

Visitation: 12 566

An exhibition from the Anangu Pitjantjatjara Yankunytjatjara (APY) Lands, *Nganampa Mantaku Mapanya: a map of our land* is the result of a unique relationship between PIRSA (Primary Industries and Resources SA) and the Tjunga Palya arts collective.

Rod Moss paintings The Hard Light of Day

26 May - 27 June

Visitation: 6 020

Rod Moss has been living and painting in Alice Springs for over two decades, forging close ties with the Aboriginal community there. This exhibition featured six paintings from this body of work and coincided with the release of Rod's memoirs, *The Hard Light of Day*.

MEGAFAUNA GALLERY

Megafauna Gallery - Christine Gates, The Desert and the Inland Sea

28 May - 25 July 2010

Visitation not available

Inspired by explorer Charles Sturt, who dragged a whaleboat into the deserts of central Australia, and by material from the South Australian Museum collections, artist Christine Gates developed a collection of prints that were displayed alongside collection material used in their creation.

VARIOUS LOCATIONS INSIDE SOUTH AUSTRALIAN MUSEUM

Inside SAM's place

4 June – 1 August 2010

Visitation not available

The *Inside SAM's Place* program of artists residencies will feature three projects in 2010-11. The first project (4 June to 29 August 2010) has been *The Laurosto Collection*, by artists Rosie Hannam, Tom Moore and Lauren Simeoni, comprised elements of visual art and design inspired by collection items at the SA Museum and integrated into public displays. Made up of fictitious animals, artefacts, minerals and ceremonial objects belonging to the equally fictitious 19th century explorer and scientist Sam Laurosto, *The Laurosto Collection* was the fourth instalment of Inside SAM's Place, a creative collaboration between the SA Museum and Craftsouth, the South Australian peak industry body for craftspeople, designers and visual artists.

Spotlight displays

A program of focus exhibitions that present donations, research and unusual collection items in front foyer locations. In 2009-10 the series featured: *Zygomaturus skull* sub-fossil and *Flint Pouches*, a donation of Tibetan fire lighting kits.

Focus Display

Wokali, the Kurna shield has been on display in the Australian Aboriginal Cultures Gallery during 2010 with the exception of a loan period during May when it was displayed at the Town Hall as part of the Reconciliation Week celebrations.

TOURING EXHIBITIONS

ANZANG Nature Photography

The full exhibition of ANZANG Nature Photography travelled to Western Australia after the exhibition closed at the South Australian Museum,

Western Australian Museum – Albany

8 December 2009 to 14 February 2010

Visitation: 15 341

Western Australian Museum - Geraldton

20 February 2010 to 26 April 2010

Visitation: 6 042

Western Australian Museum - Maritime (Fremantle)

29 April 2010 to 7 July 2010

Visitation (up to 30 June 2010): 7 590

Waterhouse Natural History Art Prize

An exhibition of 30 prize-winning and highly commended artworks from the 2009 Waterhouse Natural History Art Prize.

National Archives of Australia, Canberra

24 September – 15 November 2009

Visitation: 9 168

Australia's Muslim Cameleers: Pioneers of the Inland, 1860s – 1930s

Australia's Muslim Cameleers: Pioneers of the Inland, 1860s – 1930s, developed by the South Australian Museum in 2007, reveals the remarkable contribution made by Australia's first Muslim community made to the exploration and settlement of Australia's arid interior. Its tour of Australian venues continued into its third year.

Museum Victoria - Immigration Museum, Melbourne

Friday 26 February - Sunday 19 September 2010

Visitation (up to 30 June 2010): 40 848

COMMUNITY ENGAGEMENT

The Community Engagement Team continue to develop and implement integrated programs which ensure the museum's collections and research are accessible to the diverse groups of visitors for study, education and enjoyment.

For the reporting period, the department has focused on refining existing programs and events while identifying areas for change, improvement and new development. Priorities for forward progression have been identified. The team has worked collaboratively with internal and external stakeholders, working towards achieving long-term, strategic business plans through the provision of targeted programs.

The department has continued to strengthen its relationships across the organisation, including closer links with the Science Centre staff. The museum continue to develop relationships with many organisations outside the SA Museum including colleagues along the North Terrace precinct (State Library of South Australia, ArtLab Australia, the Art Gallery of South Australia and Migration Museum) and other organisations such as the RiAus and UniSA, resulting in collaborations on a wide variety of programs including Science Week, Palaeontology Week and Roadshows.

Highlights:

Bring Us Your Bugs 2

Part 2 of *Bring Us Your Bugs* was held on the 7 October 2009. This highly successful event was a collaboration between the SA Museum, Barbara Hardy Centre Uni SA, 891 ABC Adelaide, Burt's Bees and FauNature. Researchers from The University of South Australia and the SA Museum collected live invertebrates from the 'wilds' of Adelaide. The event was held on the front lawns of the museum and was conducted in conjunction with a live, outside broadcast by ABC 891 Radio, Adelaide attracting thousands of visitors. Over 1 000 bugs (including one moth unrecorded for over 70 years) were collected and the museum recorded an attendance of 4 651 visitors through its doors for the day.

Opening of the Biodiversity Gallery

A large amount of energy was channelled into the official opening of the Biodiversity Gallery in February, 2010. To complement the official launch, the Community Engagement team developed a comprehensive 3 day program for visitors. Events included specialist tours of the gallery, floor talks, torchlight tours, a twilight event establishing of a Village Green on the front lawn (involving a range of SA Museum scientists and special guests), a highly popular family day and a children's trail through the gallery.

Tell me a Story

Tell me a Story is a continuation from the program developed in the last reporting period, designed for young children and their families to discover some of the wonderful stories from the museum collections. *Tell me a Story* has continued to be a success and has attracted a large interest from families with children aged 3-5 years. Due to its popularity the program has been expanded in 2010, with scheduling going from one session per month to four sessions per month, offered over 2 days. The Community Engagement team acknowledge the commitment shown to the program by Toby Finch and Shay Thomas-Rampal who deliver these popular events. For the 2009-10 period, a total of 216 children participated in the programme..

Sprigg Lecture Series

Established in August 2008, the Sprigg Lecture Series continues to commemorate the achievements of Dr Reginald Sprigg by delivering scientists to the public via lectures addressing current issues. Guest speakers and attendees enjoyed ‘fully booked’ sessions of events held in 2009-10, with an average of 210 attendees per lecture.

18 August 2009

Presented by Professor Ian Plimer, Mawson Laboratories University of Adelaide

1 December 2009

Presented by Professor Pat Vickers-Rich, Monash Science Centre Melbourne

23 March 2010

Presented by Professor Michael Archer, Dean Faculty of Science University of NSW

Science Week

The Science Week program continues to attract schools audiences through the *Face-to-Face* student workshop program, developed in collaboration with the Museum’s Education team. In 2009 the *Science + Art =?* Family day was introduced to connect Science Week with the Waterhouse Natural History Art Prize exhibition. This free family day included workshops, art trails and talks. It was extremely popular with visitors and will be implemented again in August 2010.

As part of the Science Week program, the SA Museum opened its ‘behind the scenes’ doors to the public, hosting tours through collection storages areas at Netley and science labs in Bolivar. Numerous performances and events were held for school groups and families over the week, engaging hundreds of people through a varied schedule of events, tours and performances.

Palaeontology Week

This nine day event continued to attract a high number of repeat and new visitors. A collaborate approach to program development resulted in a program including SA Museum, national and international palaeontologists. As in 2009, the temporary exhibition space provided an excellent base for a broad range of a range of talks, tours and displays for visitors.

Workshops for school students with the museum education team were conducted during the week, a twilight event engaging older students was introduced, and events in the fossil regional areas (Burra, Naracoorte, Kangaroo Island and Arkaroola) were also conducted. As with Science Week, the museum had impressive participation in all of the events.

Out of the Glass Case Roadshows

The ‘*Out of the Glass Case*’ Roadshows continue to be a highly popular and successful innovation reaching audiences across the state. In 2010 the SA Museum embarked on a comprehensive and exciting Roadshow to Umuwa in the APY Lands. This Roadshow was many years in the making and its success was due to an incredible, comprehensive program developed by Sue Mikkelsen.

For the 2009-10 period the *Out of the Glass Case* Roadshows visited the following regional areas:

September 2009 – Mid North Roadshow

Flinders Ranges school days (Quorn, Hawker and Leigh Creek) reaching:
A total of 360 students ranging from Reception to Year 4, Years 8 to 10, plus 120 members of the local community.

November 2009 – South East Roadshow

The South East Roadshows hosted schools day in Mount Gambier and Millicent reaching an approximate 450 students. An addition, a total 120 people attended afternoon events for public engagement across both locations. Events were also held in Robe with the museum participating in the Robe Village Festival/Fair, attracting an estimated 500 people.

March 2010 – Palaeontology Week Roadshow

Held in conjunction with the SA Museum Palaeontology Week, satellite events were conducted in Burra, Naracoorte, Kangaroo Island and Coober Pedy and drew an estimated 240 students for school workshops and 500 general public to evening talks.

May 2010 – APY Lands

The week long Roadshow ‘hub’ in Umuwa attracted all nine school communities, reaching approximately 640 students who were accompanied by visiting teachers, parents and community elders/leaders.

Friday’s Community Day saw participation by Land Management Indigenous rangers and community Elders, Ernabella School Choir, Fregon and Ernabella Art Groups for workshops together with access by special needs groups such as aged care and disabled with significant visitation from local residents and community leaders.

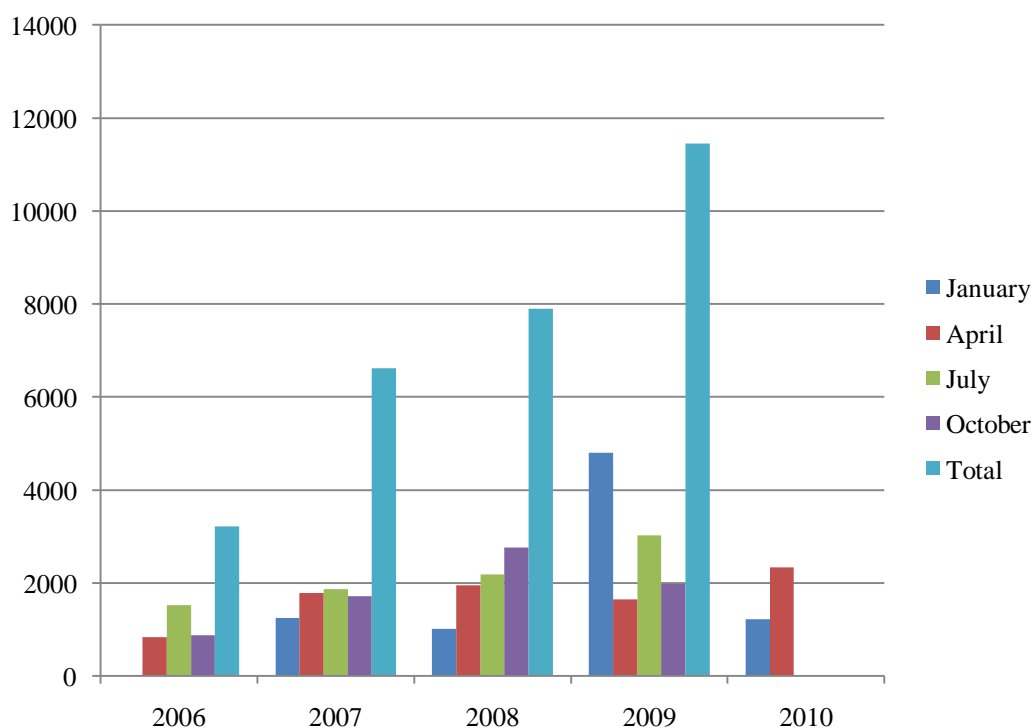
School Holiday Program

One of the highlights for families is the extremely successful School Holiday Program, managed by Kristy Tucker. The Community Engagement team have maintained a commitment to developing and improving this program by:

- Increasing the involvement of employed School Holiday Program staff in the collaborative planning and review of the program,
- Implementing a training program for staff to enhance group cohesion and develop their knowledge of the collections,
- Successfully applying for grant funding to assist in the delivery of a comprehensive NAIDOC celebration during the July school holiday program,
- Strengthening the connections between the program and the museum's collections and stories through careful selection of activities, interpretation, handouts, trails and publicity.

Visitation to the School Holiday Program for 2009-10

Monthly Comparison of School Holiday Program Participants					
	2006	2007	2008	2009	2010
January	N/A	1250	1007	4801	1227
April	833	1788	1951	1644	2339
July	1519	1861	2181	3024	
October	871	1718	2763	1978	
Total	3223	6617	7902	11447	



Visitation to SA Museum Holiday Programs

Other Events and Programs

Other events and programs over the last 12 months have included *Inside SAM's Place* in partnership with Craftsouth, Public Sector Week, History Week, Volunteers Week as well as hosting a number of student teachers and work experience students.

Reopening of the Information Centre

In May 2010, the museum opened a temporary Information Centre to replace the Discovery Centre previously closed due to the development of the Biodiversity Gallery. The museum is in the process of planning a new Information Centre for its visitors.

OFFICIAL VISITS AND TOURS

24 & 25 September 2009

His Excellency Mr Abelardo Curbelo Pardon
Ambassador of the Republic of Cuba

20 January 2010

Mr SHIM Byung-sub, Director of International cooperation,
CHUNGCHEONGNAM-DO PROVINCIAL GOVERNMENT

7 May 2010

His Excellency Mr David Martin Daly,
Ambassador and Head of Delegation of the commission of the European
Communities.

3 June 2010

His Excellency Mr Vincencije Biuk, Ambassador of The Republic of Croatia

16 September 2009

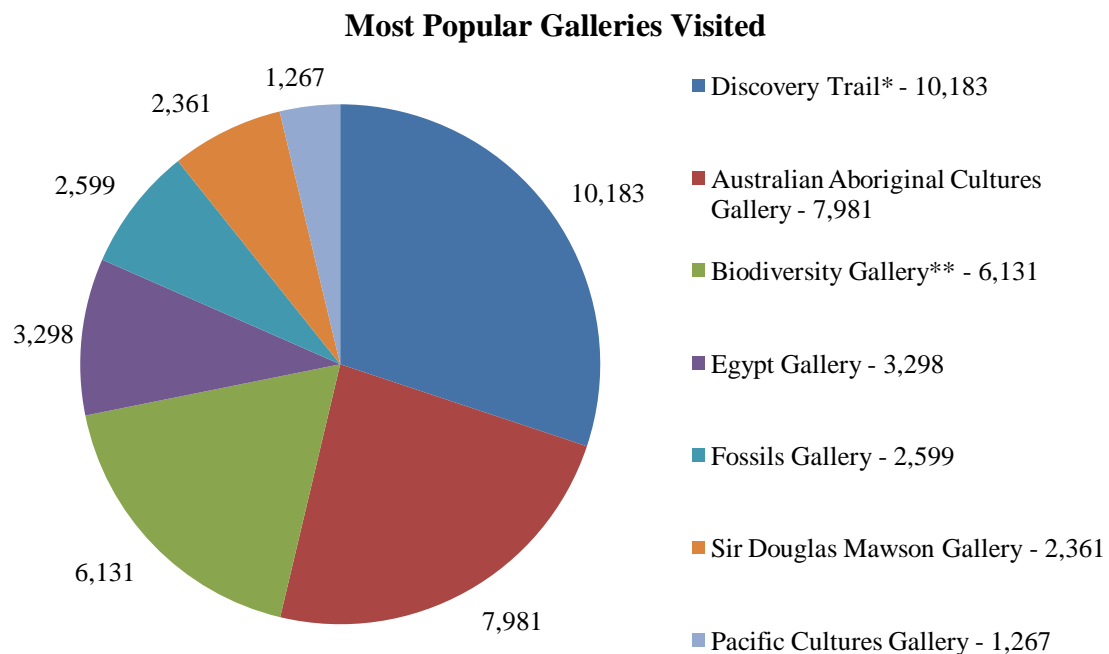
Tom MacDonald, Consul General of Canada

25 November 2009

H.E. MR. Gian Ludovico DE Martino di Montegiordano,
Itlaian Ambassador to Australia

EDUCATION SERVICES

The SA Museum continues collaborate work with the Department of Education and Children's Services enabling education opportunities for thousands of South Australian school children. For the reporting period the museum recorded 32 660 students visiting the North Terrace sites, with a total of 36 904 students participating in museum orientated educational activities. Activities include North Terrace visits, Travelling Education Service (TES), in-classroom Discovery Cases and Regional Roadshows. The most popular galleries and programs utilised by school groups for the period are indicated in the table below.

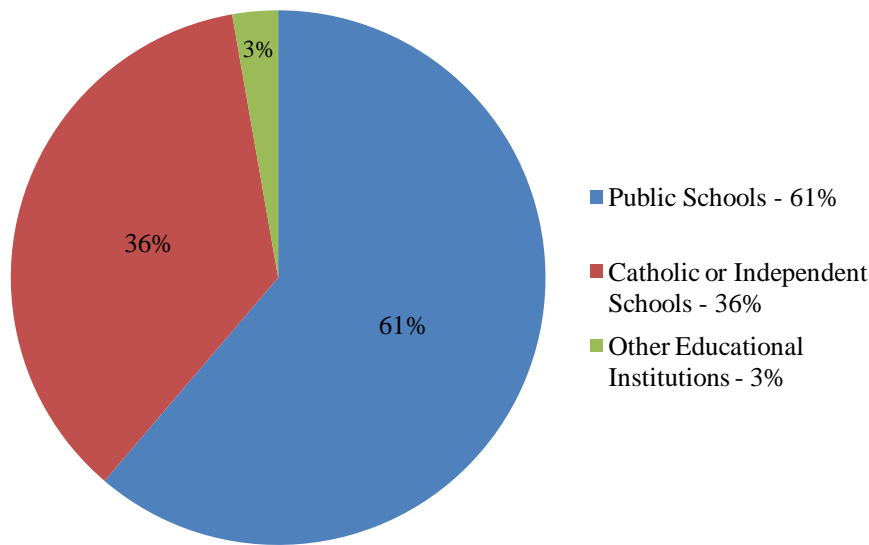


Note: Total number of gallery visits is higher than the overall student numbers stated as many student groups tour multiple galleries.

* Discovery Trail is a self guided tour of the museum with the aid of teacher notes prepared by museum based Education Officers.

** Biodiversity Gallery opened February 2010.

Visitation to North Terrace Sites by Sector



The Department of Education and Children's Services Education Officers

Two education officers on secondment from DECS continued to provide ongoing support to teachers and school groups visiting the Museum. They were supported by Christina Pietrantonio from the museum, and two Indigenous Culture and language specialists employed as hourly paid instructors.

Simon Langsford, Education Officer (EO DECS), formally worked on the Museum Biodiversity Gallery project on secondment from DECS. Simon and Chris Nobbs (EO DECS) developed a suite of new print resources to support teaching and learning in the new gallery including an MP3 audio tour and hands-on activities. A new interactive screen and computer has been purchased to deliver innovative student centred learning programs in the Biodiversity Gallery and other galleries. A series of professional development programs were also organised to introduce teachers to the new education programs for the Biodiversity Gallery. The programs developed for the Biodiversity Gallery are proving extremely successful. Within the first 4 months of opening, the Biodiversity Gallery hosted 6 131 students, equating to an average of 76 students per school day.

The education team worked closely in collaboration with public programs and science staff to ensure that innovative teaching and learning programs were accessible to students in both the metropolitan and country schools across South Australia.

The Travelling Education Service

Education officers continued to work in collaboration with exhibitions staff and museum scientists on the development of a new Travelling Education Service (TES). The exhibition modules focus on collections-based scientific research at the museum with reference to the study of evolution, arachnids, deep-sea animals, marine reptiles and Ediacaran fossils. The production of the new TES, titled *Collect, Research Discover*, was in abeyance until the completion of the Biodiversity Gallery and is now scheduled for completion on 23 August 2010 after which it will tour of the mid-north of South Australia.

Special Programs

A number of highly successful special programs were organised for schools in collaboration with the managers of the museum's Community Engagement including Palaeontology Week, National Science Week and The Waterhouse Natural History Art Prize exhibition. The education service also contributed to the delivery of Regional Roadshows to the APY Lands and Kangaroo Island with a combined total of 800 students accessing programs through these events.

Therese Minitong-Kemelfield from Bougainville delivered hands-on programs for students in the Pacific Cultures Gallery using the new Discovery Drawers and education display case.

Elsie Amamoo, a Gubbi Gubbi and Nurrunga woman facilitated the Indigenous Youth Program (IYP). The IYP has grown and is now attracting more Aboriginal students who achieve learning outcomes at the museum. These learning outcomes count towards their South Australian Certificate of Education (SACE). Students assist in delivering teaching and learning programs to students visiting the Australian Aboriginal Cultures Gallery, visit the museum's Archive, the museum's store at Netley, receive an introduction to the Ara Irititja program as well participate in a tour of the museum's Ethnographic collections administered by Tara Dodd.

The new education Discovery Cases are in constant demand and the bookings process is efficiently and effectively coordinated by Christina Pietrantonio. For the reporting period the Discovery Cases were loaned to schools 68 times. This has been made possible with sponsorship from Santos.

Education Volunteers

In a new initiative, the education team have established a group of Education Volunteers to assist in meeting the growing demand for face-to face teaching in the museum galleries.

ABORIGINAL RECONCILIATION

The Museum continues its active participation in the Return of Indigenous Cultural Property program funded by the Federal Government. Consultations continue with Aboriginal communities and senior custodians within both South Australia and interstate to inform the collections and, as appropriate, enact repatriation to traditional owners of ancestral remains and secret/sacred objects.

SCIENCE – RESEARCH

The Museum has maintained its formidable reputation in science research.

Anthropology & Archives

- Researchers within the Anthropology Department continued with their established high yield research projects, with a focus on documenting and interpreting collections. This has produced major publications and exhibitions, both physical and online.
- Barry Craig continued his research as part of the ARC-Linkage Upper Sepik-Central New Guinea Project. A number of papers from this project are prepared for publication, with his co-workers Andrew Fyfe and Jill Bolton. These and other materials are available on the associated website (<http://www.uscngp.com/>), including an image ‘Gallery’ of over 250 colour photographs showing people, places and objects in the Upper Sepik-Central New Guinea region. Craig organised the scanning, indexing and archiving of significant Melanesian photographic collections, which was funded by a \$10 000 grant from the Gordon Darling Foundation. He identified, and prepared a complete illustrated inventory and condition report of, the large number of components of the Apangai (Abelam people, northern New Guinea) men’s cult house, donated to the SA Museum by Neil McLeod of Melbourne.
- Philip Jones was in the United Kingdom on a research trip during May - June 2010 as part of an ARC Linkage Project to document the ethnographic collections of Baldwin Spencer and Francis Gillen, in the British Museum and Manchester University Museum. He continued his research into the history of German natural science and ethnography in 19th century South Australia. From September to December 2009, Dr Jones took up the Harold White Fellowship at National Library of Australia to undertake research on the colonial and ethnographic artist, George French Angas (1822-1886).
- Peter Sutton’s book, *The politics of suffering: Indigenous Australia and the end of the liberal consensus*, was published by Melbourne University Press in July 2009. It stimulated much interest and debate, especially in the media, academia and among the helping professions. It won the Manning Clark National Cultural Award and was short-listed for the John Button Prize for political writing (winner to be announced 3 September 2010). Sutton also published papers on Aboriginal art, religion and politics, and anthropological history, and gave guest lectures at universities in Auckland, Istanbul, London, Melbourne and Perth.
- Philip Clarke was engaged in an extensive fieldwork program across the Top End of the Northern Territory to consult with Senior Aboriginal Custodians on the future of Secret Sacred Objects and Ancestral Remains held by the SA Museum. The work was performed in partnership with the Northern Land Council and was funded by the state and federally-funded Return of Indigenous Cultural Property (RICP) project.

The Indigenous communities Dr Clarke visited included Gunbalanya (Oenpelli), Jabiru, Maningrida, Warruwi (South Goulburn Island), Yilpara (Blue Mud Bay) and Yirrkala. With the support of the Waterhouse Club, Dr. Clarke undertook a Central Australian expedition documenting Aboriginal rock art in July 2009. Dr. Clarke was guest curator for the Aboriginal component of the Museum of Economic Botany permanent exhibit in the Adelaide Botanic Gardens. He continued his research and university teaching in ethnobotany, economic botany and Aboriginal cosmology.

Biological Sciences

- Biology research staff were successful in gaining new grant funding amounting to more than \$2.5M. These grants include major Australian Research Council projects studying restoration genetics of fishes (M. Adams), the biodiversity and population genetics of groundwater calcrete ecosystems of central Western Australia (S. Cooper and M. Stevens) and environmental genomics (M. Stevens), and additional large grants for research of Antarctic invertebrates (M. Stevens), marine mammals (S. Donnellan) and desert skinks (S. Donnellan).
- The complete mitochondrial genome for a monogenean parasite, *Benedenia seriola*, that infects farmed kingfish in Spencer Gulf, was published in the International Journal for Parasitology by PhD student Elizabeth Perkins (University of Adelaide) with collaborators S. Donnellan, T. Bertozzi and I. Whittington (SA Museum).
- Biology research staff supervised seven students to successful completion of their PhD projects: Chris Izzo (supervised by S. Donnellan), Kate Muirhead (supervised by S. Donnellan), Elizabeth Perkins (supervised by I. Whittington and S. Donnellan), Rissa Williams (supervised by I. Whittington), Tessa Bradford (supervised by S. Cooper), Elisa Sparrow (supervised by S. Cooper), Paul Oliver (supervised by M. Lee and S. Cooper), all from the University of Adelaide.
- S. Cooper and R. Leijds participated in a workshop on groundwater and troglobiont ecosystems in Darwin, September 2009, which reported the discovery of more than 850 new species of animals living underground in Australia. This story was picked up by over 250 radio stations, newspapers, and science websites, internationally.
- S. Donnellan and M. Hutchinson were involved in the discovery of two new families of snakes, in collaboration with colleagues in the US and France.
- S. Donnellan was involved in the development of a new method for incorporating evolutionary diversity into assessing the value of biodiversity for different regions, published in one of the world leading journals *Molecular Ecology*.
- T. Reardon, in collaboration with scientists from James Cook University, reviewed the conservation status of Cape York microbats (over half the threatened mammals species on Cape York are bats). In a month long field trip, over 89 000 bat echolocation calls were recorded and analysed (including first calls ever recorded for the Papuan Sheath-tail bat) which together with trapping effort, resulted in new insights for distributions, identification, taxonomy and survey methods.

Earth Sciences

- The research programs into the chemistry and physics of ore deposit formation made major advances during the year, including a number of neutron diffraction and X-ray absorption experiments using our in situ cells were undertaken in Australia, Japan and France.
- The mineralogy group was particularly successful in obtain new funding from the Australian Research Council for major projects investigating ore forming hydrothermal reaction, bacterial platinum interactions and the development of a gold biosensor. The funding received was \$600,000.00. Provisional patents for the gold biosensor were also filed.
- Palaeontology staff have been leading international research teams working on excavation of serial Ediacara fossil-bearing seafloors at the National Heritage Listed Ediacara Fossil Site at Nilpena in the Flinders Ranges, and in the discovery and identification of exceptionally preserved, new Cambrian fossils from Emu Bay on Kangaroo Island. The team has assisted in highly popular local community engagements and participated in documentary filming events for Atlantic Productions with David Attenborough, ABC Catalyst, Japanese Open University, and NASA Astrobiology, on the subject of the origins and evolution of early animal life.
- A new ARC research project aiming to put Australian Mesozoic fossils into a global context began in 2009. As part of this program, a Waterhouse Club expedition went to SW Qld to excavate recent finds and helped forge links with local museums (Mike Lee).
- High-resolution micro-CT scanning was used to generate virtual reality models of important fossil specimens, such as the only known braincase of the giant snake Wonambi, for scientific analysis as well as public display; this technology was rapidly assimilated by other museum departments such as herpetology and ichthyology (Peter Bias, Mike Lee).

THE COLLECTIONS

The collections division within the South Australian Museum has again had a busy year developing collections, addressing backlogs and improving collection management standards. The large number of loans to and from the Museum attests to the continuing high levels of collections access and research.

- Over 2 850 objects, lots and specimens were lent to 94 institutions across the world in 2009-10.
- As part of the development of the Biodiversity Gallery approximately four thousand specimens and models have been prepared and installed in the new Biodiversity gallery. This has been an enormous undertaking by all divisions within the Museum.
- Collections acquisitions and digitisation continues to grow in line with the targeted and strategic objectives set within Collections Management and Research. Some 15 000 objects, lots and specimens have been added to the collections and a further 31 787 records were digitised.
- Delivery of collections content to the World Wide Web is now underway. A new web server has been purchased and installed. It will act as the Museum's web portal to the Online Zoological Collections in Australian Museums and the Atlas of Living Australia.
- The Australian Archaeology collections have been successfully relocated to new stores in Hindmarsh. This has allowed for improved access to the collections and an allied increase in student and research interest.
- Completion of the Preventive Conservation surveys and IPM programs for Entomology and Ornithology and the treatment and improved storage of the bark paintings collection were conservation highlights in 2009-10. Working with ArtLab Australia, individual collection treatments and exhibition related conservation programs have again been high on the Museum's agenda.

Acquisition highlights

Additions to the collections by way of donations, bequests, purchases and the Cultural Gifts Program (CGP) represent an addition to the overall value of the Heritage collections by some \$350 000. Highlights include;

- Hoff Collection of Aboriginal artefacts, acquired under the CGP.
- The Murray Thompson Gold Collection, South Australian, acquired under the CGP.
- Jim Kite spear, purchased with Board funds
- I warshield & 4 spears from Abelam, PNG, purchased with Museum and Board funds.
- 35 lots consisting of objects and images relating to T G H Strehlow, purchased with Board funds.
- A bark painting, of Baru the Crocodile, by the Yolngu artist, Waidjung. It is correctly attributed to the 1948 American Australian Expedition to Arnhem Land, and was collected by Charles Mountford, then gifted to Harold Sheard.

Acquisition highlights (Cont.)

- A dug out canoe, known also as a 'lipa lipa'. The canoe was commissioned in 1962 by a former manager of Yirrkala. It was made by well known Yolgnu traditional artist, Larrtjannga Ganambarr, born c. 1932. Purchased with Museum and Board funds.



Above: Double-ended throwing club, Koonibba, S.A., 1920s. Donated by Hoff family under Cultural Gifts Program.



Above: The Murray Thompson Gold Collection, South Australian, acquired under the Cultural Gifts Program



Above: Jim Kite spear

SA MUSEUM FOUNDATION

Along with the SA Museum, the Foundation was proud to announce the successful completion of the Biodiversity Gallery in February this year. The South Australian Museum Foundation engaged hundreds of donors for the development of the exhibition.

With the Biodiversity Gallery project complete the Foundation continues its fund raising activities on behalf of the Museum with collections targeted for acquisition.

The Foundation aims to constantly develop its existence and ability to work with, and for, the museum, enhancing it for all visitors.

SUPPORT ORGANISATIONS

Friends of the South Australian Museum

The Friends of the South Australian Museum (FOSAM) continue their contribution as a support group to the museum. In June 2009 the FOSAM hosted the South Australian Governor at a reception celebrating its 45th birthday.

The FOSAM have capitalised on available resources, providing special tours for community and tourist groups. During the summer of 2009-10 the FOSAM also managed the organisation of the cruise ship tours. These tours involve considerable time involvement and attract a fee. Funds raised as a result of these activities are donated to the museum as part of the FOSAM's commitment as a supporter group. In addition to the services with fees, the FOSAM coordinate the free daily tour for the general public.

Member numbers to the FOSAM remain stable; however, efforts in improvement to the membership count are continual. Currently the FOSAM provide an annual program for their members including talks by scientists, visits to other museums and behind the scenes tours of the SA Museum.

The Waterhouse Club

In 2009-10, the Waterhouse Club contributed \$200 000 to the SA Museum Foundation's fundraising program for the new Biodiversity Gallery. This was generated through a very successful program of events and expeditions over recent years, driven by a strong contingent of hard working volunteers and supportive members. The museum acknowledged the Waterhouse Club's contribution by announcing it as a "Key Partner" and "Major Financial Contributor" to the development of the Biodiversity Gallery. In support of the opening, the Waterhouse Club offered an innovative event titled "The Perversity in Diversity Cocktail Party" to its members.

To improve its services to the museum, the Waterhouse Club also offers variances on its expeditions. In the "Blood, Sweat and Tears" expeditions members are invited to work in the field under the guidance of a museum scientist who coordinates all aspects of the operation.

The “Rapid Response Group” consists of members who are available at short notice to travel into the field to collect on behalf of the museum. Recently, the “Rapid Response Group” has participated in activities in response to rain in the arid lands and assisting with the provision of materials gallery development.

At end of the reporting period membership to the Waterhouse Club stood at 330 (including family membership). As many of the Club’s expeditions are selling out well in advance, the Committee is carrying out a thorough review of its operations to ensure that it is meeting the needs of its membership and the SA Museum. The Club aims are to build a community of support for the museum amongst the opinion leaders of South Australia, to involve them in the good work that the museum does with a schedule of innovative and entertaining events.

Major achievements of the Waterhouse Club for the 2009-10 period include:

- ‘Aboriginal Art Ancient and Modern’: An expedition to explore the artistic links between ancient rock art and contemporary art in the area south east of Alice Springs with Dr Philip Clarke (SA Museum).
- ‘The Bat Rescue Expedition to Naracoorte’ to assist in mapping the feeding patterns of the endangered bent wing bat with Terry Reardon (SA Museum).
- ‘To Arkaroola with Professor Ian Plimer’. An interpretation of the geology of Arkaroola with A/Prof Joel Brugger (SA Museum) and Prof Ian Plimer (University of Adelaide).
- ‘A Trilobites view of Cambrian Kangaroo Island’. Excavate specimens from the trilobite beds there and inspect the other outbreaks of the Cambrian bedding across the island with the Dr Jim Gehling (SA Museum).
- ‘An Invitation to Excavate An Amazing Dinosaur’. Participate in the excavation of a 30m titanosaur in south east Queensland while working with the Outback Gondwana Foundation whose aim is to establish a museum on the site with Mike Lee (SA Museum & University of Adelaide) and Dr Ben Kear (SA Museum Honorary Research Associate).
- Launch of the ‘The Adelie Blizzard’ Douglas Mawson’s forgotten newspaper held in the Museum’s Mawson collection and published for the first time.

Volunteer Support

The SA Museum is ever grateful for the outstanding support provided by volunteers in all areas of operation. Front of house activities have been enhanced with volunteer coordinated guided tours and the provision of assistance in a range of public programs such as Science Week and Palaeontology Week. The Community Engagement team continue to offer a comprehensive learning program for front of house based volunteers, working closely with Science Centre staff. With the Biodiversity Gallery opening in February 2010, volunteer learning has had a strong focus in this area to incorporate the stories of this new gallery into their programs.

The second half of 2009 saw many of the front of house volunteers complete their learning and mentor training program, and begin to take independent guided tours.

An increase from 19 to 40 fully trained front of house volunteers has enabled the museum us to broaden the visitor program in 2010 by introducing specialist tours. A variety of avenues have been used to publicly promote these tours and visitor numbers are steadily increasing.

In 2010 the volunteers have also established a Newsletter committee and developed a newsletter for the Volunteer team. Feedback about the first edition from the Volunteers has been extremely positive.

WORK EXPERIENCE

As a component of its community engagement, the Museum maintained its efforts to offer secondary and tertiary students appropriate work experience placements. A total of 9 placements have been awarded across both science and public program divisions for the reporting period.

COMMERCIAL ACTIVITIES

The museum is able to provide free programs and activities through the support of its commercial activities. The continual development of commercial initiatives has enabled the museum to increase the number of free programs and services provided to visitors.

Venue Hire

The museum's venue hire opportunities continue to prosper. The newly opened Biodiversity Gallery is an attractive tour option for many external groups hiring function space within the museum. The Pacific Cultures Gallery is continuing to be a popular event location as is the main foyer. The museum has increased its targeted promotional campaigns to audiences that 'dare to be different' and have a function somewhere outside of the norm.

Sponsorship/Business Development

The museum continues to develop and maintain partnerships with a wide range of commercial organisations to assist with the development and operation of programs and events. Both in-kind and cash support has enabled the museum to host large in-bound travelling exhibitions and provide associated community events. The museum remains ever grateful for the support of all its sponsor partners and donors.

MEDIA

Marketing and public relation endeavours have positively contributed to an increase in 'media hits' where the museum is mentioned. For the 2009-10 period, the SA Museum recorded 849 total media mentions, a 17.5% increase compared to that in 2008-09. The increase in media mentions has been a result of the museum's strong editorial presence in local and national media services, notable media groups mentioning the museum are: The Australian, The Advertiser, The Messenger, Australian Geographic, SA Life, Adelaide Review, Channel 9 Adelaide, ABC 891 Radio and ABC 7:30 Report.

Strategic allegiances with media partners (The Adelaide Review, Adelaide Central Plaza, Adelaide's Child and ABC 891 Adelaide) have also enabled the museum to effectively promote exhibitions and programs.

The museum's marketing and PR team have reached out to the general public via a quarterly distribution of 10 000 'What's On' leaflets to hotels, restaurants, cafés libraries and subscribers; produces biannually 5 000 newsletters and sends e-newsletters to over 1 200 subscribers every month.

WEBSITE

The museum's web sites have been frequently updated, providing visitors and information seekers with valuable, up-to-date information on exhibitions, programs, events, collections and research. The museum's main site, samuseum.sa.gov.au had 1 380 151 visits during 2009-10. Two of the museum's coordinated exhibitions; The Waterhouse Natural History Art Prize & ANZANG Nature and Photography Competition have independent web sites. The Waterhouse exhibition site (thewaterhouse.com.au), recorded 99 448 visits while the ANZANG site recorded over 70 000 visits for 2009-10. Artists and photographers seeking entry into these competitions are also able to do so via these websites.

Background updates to the main museum website is nearing completion, once finished the site will be more versatile and adaptable to change. During the 2010-11 financial year the museum aims to expand its online interaction with visitors, incorporating an interface in which people can register for events and make donations via its web site.

Capitalising on an ever growing social networking phenomena, the SA Museum has established a Facebook fan page with hundreds of people subscribed to updates on programs and events.

GREENING OF GOVERNMENT OPERATIONS REPORTING

The Museum maintains ever committed to improving energy efficiency. In conjunction with contracted facilities maintenance, the museum's executive have implemented a full recycling and biodegradable refuse removal system throughout all work spaces on the North Terrace site. In addition to this, the museum has formed an alliance with Carbon Planet which works towards improving energy usage.

ENERGY EFFICIENCY ACTION PLAN REPORTING

The South Australian Museum's Energy Efficiency Action Plan Reporting is captured in the Department of Premier and Cabinet reporting.

3. PUBLICATIONS, TEACHING & DISSEMINATION OF RESEARCH – MUSEUM STAFF 2009-10

Museum staff contributed 1996 hours towards tertiary teaching at various Universities.

Research collaborations maintained 30 partnerships (5 with other museums, 22 with Universities and 3 with other research institutions).

Museum staff published 184 scholarly publications, 51 other publications and presented a further 117 academic & public lectures, workshops and conference papers.

3.1 Books and monographs:

Daniels C.B. (2010). *Adelaide Water of a City*: Wakefield Press Adelaide 600,000 words, 30 chapters, 132 boxes, 130 authors. 581 pp.

McArthur, Archie (2010). *A guide to Camponotus Ants of South Australia*. South Australian Museum, Adelaide.

Roetman P.E.J and **Daniels, C.B.** (2009). *The Possum-Tail Tree*. Barbara Hardy Centre, Adelaide. 144 pp.

Strachan, R., Alsop, I., Friend, C and **Miller, S.** (2010). *An Excursion Guide to the Moine Geology of the Northern Highlands of Scotland*. National Museums Scotland Publishing, Edinburgh. 298pp.

Sutton, Peter (2009). *The Politics of Suffering: Indigenous Australia and the End of the Liberal Consensus*. Melbourne University Press, Melbourne.

Sutton, Peter (2010). *Native Title in Australia: an Ethnographic Perspective*. Cambridge: Cambridge University Press ISBN 0521011906 [paperback edition of 2003 hard cover book ISBN 0521812585].

Tyler, M.J., and Knight, F. (2009). *Field Guide to the Frogs of Australia*. CSIRO Publishing, Collingwood, Australia.

Tyler, M.J., and Doughty, P. (2009). *Field Guide to Frogs of Western Australia*. 4th Revised Edition, Western Australian Museum, Perth.

Tyler, M.J. (2009). *Yes, It's True. Frogs are Cannibals*. (Korean Language Edition).

Tyler, M.J. (2010). *Yes, It's True. Frogs are Cannibals* (Chinese Language Edition).

Walshe, K. (ed) (2009). *Roonka, fugitive traces and climatic mischief*. Hyde Park Press, Adelaide.

3.2 Chapters in books:

Akerman, K (2009). Interaction between humans and megafauna depicted in Australian rock art? *Antiquity* **83**(322).
Available at <<http://www.antiquity.ac.uk/projgall/akerman322/>>

Akerman, K., Skyring, F. and Yu, S. (2010). The Indigenous cultural heritage values associated with pearl shell and pearling for the west Kimberley coast. Unpublished report prepared for the Kimberley Land Council for National Heritage Listing for the Kimberley Region.

Akerman, K. (2010), 'Aboriginal Dress in the Kimberley, Western Australia' in the *Berg Encyclopedia of World Dress and Fashion*, edited by Joanne B. Eicher, Vol.7, *Australia, New Zealand, and the Pacific Islands*, edited by Margaret Maynard, pp. 53-59. Oxford: Berg Publishers.

Bowie, J.H., Jackway, R.J., Separovic, F., Carver, J.A. and **Tyler, M.J.** (2009) Host-defense peptides from the secretion of the skin glands of frogs and toads: membrane-active peptides from the genera *Litoria*, *Uperoleia* and *Crinia*. Chap. 15, CRC Press, Taylor and Francis, pp.333-355.

Clarke, P.A. (2009). Aboriginal culture and the Riverine environment. Pp.142-161 in J.T. Jennings (ed) 'The Natural History of the Riverland and Murraylands'. Royal Society of South Australia, Adelaide.

Clarke, P.A. (2010). Economic botanists, ethnobotany and Aboriginal plant use. Pp.62-5 in P. Emmett & T. Kanellos (eds) *The Museum of Economic Botany at the Adelaide Botanic Garden. A Souvenir*. Board of the Botanic Gardens and State Herbarium, Adelaide.

Daniels C.B., Argue J.J, Beecham S., Clark, R.D.S., Howard, J.R., Jones, D.S., Marks, R., McKay, J.M., Roetman, P.E.J., and Smith K.E. (2010) Chapter 1 Introduction *In: Daniels C.B. (Ed) Adelaide Water of a City* Wakefield Press Adelaide. Pages 36-51.

Daniels C.B., Argue J.J, Beecham S., Clark, R.D.S., Howard, J.R., Jones, D.S., Marks, R., McKay, J.M., Roetman, P.E.J., and Smith K.E. (2010) Chapter 29 Conclusion *In: Daniels C.B. (Ed) Adelaide Water of a City* Wakefield Press Adelaide. Pages 562-571.

Daniels. C.B., Johnston, G.R., and Gray C.J. (2010) Chapter 5 Biodiversity of the Waterways *In: Daniels C.B. (Ed) Adelaide Water of a City* Wakefield Press Adelaide. Pages 106-128.

Gehling, J.G., Kelly, T., Gell, P., Westall, K., and Ingelton, G. (2010) Chapter 13 Climate Change. *In: Daniels C.B. (Ed) Adelaide Water of a City* Wakefield Press Adelaide. Pages 275-285.

Greenslade, Penelope (2009). Soil invertebrate diversity of different landscape units at Cravens Peak with a focus on Collembola. In: Cravens Peak Scientific Study Report. Geography Monograph Series. The Royal Geographical Society of Queensland Inc. Brisbane, Queensland. Pp 151–198.

Hodgson, D.A., Abram, N., Anderson, J., Bargelloni, L., Barrett, P., Bentley, M.J., Bertler, N.A.N., Chown, S., Clarke, A., Convey, P., Crame, A., Crosta, X., Curran, M., di Prisco, G., Francis, J.E., Goodwin, I., Gutt, J., Massé, G., Masson-Delmotte, V., Mayewski, P.A., Mulvaney, R., Peck, L., Pörtner, H-O., Röthlisberger, R., **Stevens, M.I.**, Summerhayes, C.P., van Ommen, T., Verde, C., Verleyen, E., Vyverman, W., Wiencke, C., Zane, L. (2009). “Antarctic climate and environment history in the pre-instrumental period”. Chapter 3 in: Turner, J., Convey, P., di Prisco, G., Mayewski, P.A., Hodgson, D.A., Fahrbach, E., Bindshadler, R., Gutt, J. (eds). “Antarctic Climate Change and the Environment”. Scientific Committee for Antarctic Research, Cambridge.

Hutchinson, M. N. (2009) Reptiles and Amphibians. In: Jennings, J. (ed.) *Natural History of the Riverland and Murraylands*. Royal Society of South Australia, Adelaide, pp 283-300.

Peterson, K., Cotton, J.A., **Gehling**, J.G. and Pisani, D. (2009). The Ediacaran emergence of bilaterians: congruence between the genetic and the geological fossil records. In: M.J. Telford & D.T.J. Littlewood, eds. *Animal Biology: Genomes, Fossils, and Trees*, Oxford University Press. Ch. 2, p. 15-23.

Matthews, E. G., Lawrence, J. F., Bouchard, P., Steiner, W. E. Jr and Slipinski, S. A. (2010) Family Tenebrionidae. Pp 574 – 659 in Beutel, R. G. and Leschen, R. A. B. (eds) *Handbook of Zoology. A Natural History of the Phyla of the Animal Kingdom. Volume IV – Arthropoda: Insecta. Part 38. Coleoptera, Beetles. Volume 2: Systematics. Part 2.* Berlin: Walter de Gruyter.

Reed, L. (2009) ‘A vertebrate CSI’. Pp. 37-40. In SA Museum. “The Fossil Hunters”. South Australian Museum, Adelaide.

Sheil, R.J., **Smales, L.**, Sterrer, W., Duggan, I.C., Pichelin, S and Green, J. D. (2009). Phylum Gnathifera. Chapt 8 in Ed Richardson D. *The New Zealand Inventory of Biodiversity: Volume 1. Kingdom Animalia*. Canterbury University Press, Christchurch. Pp137-158.

Sutton, Peter. (2009). Arthur Koo’ekka Pambegan Jr. In Brenda Croft (ed), *Culture warriors: National Indigenous Art Triennial* (Second revised edition), pp32-36. Canberra: National Gallery of Australia.

Sutton, Peter. (2009). Craig Koomeeta. In Nicole Foresheew & Brian Parkes (eds), *Menagerie: Contemporary Indigenous Sculpture*, pp76-79. Sydney: Object: Australian Centre for Craft and Design and The Australian Museum.

Sutton, Peter. (2009). Leigh Namponan. In Nicole Foreshow & Brian Parkes (eds), *Menagerie: Contemporary Indigenous Sculpture*, pp102-103. Sydney: Object: Australian Centre for Craft and Design and The Australian Museum.

Turner, J., Arthern, R., Bromwich, D., Marshall, G., Worby, T., Bockheim, J., di Prisco, G., Verde, C., Convey, P., Roscoe, H., Jones, A., Vaughan, D., Woodworth, P., Scambos, T., Cook, A., Lenton, A., Comiso, J., Gugliemin, M., Summerhayes, C., Meredith, M., Naveira-Garabato, A., Chown, S., **Stevens, M.I.**, Adams, B., Worland, R., Hennion, F., Huiskes, A., Bergstrom, D., Hodgson, D., Bindschadler, R., Bargagli, R., Metzl, N., van der Veen, K., Monaghan, A., Speer, K., Rintoul, S., Hellmer, H., Jacobs, S., Heywood, K., Holland, D., Yamanouchi, T., Barbante, C., Bertler, N., Boutron, C., Hong, S., Mayewski, P., Fastook, J., Newsham, K., Robinson, S., Forcarda, J., Trathan, P., Smetacek, V., Gutt, J., Pörtner, H-O., Peck, L., Gili, J-M., Wiencke, C., Fahrbach, E., Atkinson, A., Webb, D., Isla, E., Orejas, C., Rossi, S., Shanklin, J. (2009). "The Instrumental Period". Chapter 4 in: Turner, J., Convey, P., di Prisco, G., Mayewski, P.A., Hodgson, D.A., Fahrbach, E., Bindschadler, R., Gutt, J. (eds) "Antarctic Climate Change and the Environment. Scientific Committee for Antarctic Research", Cambridge.

Turner, J., Shanklin, J., Sparrow, M., Arthern, R., Fleming, A., Bromwich, A., Marshall, G., Worby, T., Bockheim, J., di Prisco, G., Verde, C., Convey, P., Wang, Z., Roscoe, H., Jones, A., Vaughan, D., Woodworth, P., Scambos, T., Cook, A., Lenton, A., Jenkins, A., Comiso, J., Gugliemin, M., Summerhayes, C., Meredith, M., Naveira-Garabato, A., Chown, S., **Stevens, M.I.**, Adams, B., Worland, R., Hennion, F., Huiskes, A., Bergstrom, D., Hodgson, D., Bindschadler, R., Bargagli, R., Metzl, N., Arbetter, T., van der Veen, K., Monaghan, A., Speer, K., Rintoul, S., Hellmer, H., Jacobs, S., Heywood, K., Holland, D., Yamanouchi, T., Barbante, C., Bertler, N., Boutron, C., Hong, S., Mayewski, P., Fastook, J., Fahrbach, E., Webb, D., Clarke, A., Gutt, J., Linse, K. (2009). "Observations, Data Accuracy and Tools". Chapter 2 in: Turner, J., Convey, P., di Prisco, G., Mayewski P.A., Hodgson, D.A., Fahrbach, E., Bindschadler, R., Gutt, J. (eds). "Antarctic Climate Change and the Environment. Scientific Committee for Antarctic Research", Cambridge.

Tyler, M.J. (2010). Adhesive dermal secretions of the Amphibia, with particular reference to the Australian Limnodynastid genus *Notaden*. In J. Byren and I. 'Grunwald (eds.) 'Adhesion Phenomena in nature. From Structure to Application'. Springer, Berlin.

Walker K.F., **Madden, C.P.**, Williams, C.R., Fricker, S.R., Michael C. Geddes, M.C., Goonan, P.M., Kokkinn, M.J., McEvoy, P.K., Shiel, R.J., Tsymbal, V. (2009). Freshwater Invertebrates. Pp.283-305- in J.T. Jennings (Ed.) 'The Natural History of the Riverland and Murraylands'. Royal Society of South Australia, Adelaide.

Walshe, K. (2009) 'What happened to Roonka'; 'Australian Archaeology and the emergence of Roonka' and 'Rounding up Roonka'. Parts One and Four in *Roonka* edited by K. Walshe.

Warburton, N. M. and **Prideaux, G. J.** (2009). Functional pedal morphology of the extinct tree-kangaroo *Bohra* (Diprotodontia: Macropodinae). Pp. 137-151 in G. C. Coulson & M. D. B. Eldridge (eds) 'Macropods: The Biology of Kangaroos, Wallabies and Rat-kangaroos'. CSIRO Publishing, Melbourne.

Whittington, I.D. (2010). Parasitology at the University of New England. In Chapter 12, Parasitology at Armidale, New South Wales. In: *A History of Parasitology in Australia and Papua New Guinea*, Beveridge I. & O'Donoghue P.J. (Eds.), pp. 215-217. Raw Publishing, Blackburn, Victoria, Australia.

3.3 Scholarly journal papers:

Barton D.P., Beaufriere Charles, Justine Jean-Lou and **Whittington Ian D.** (2009). Polyopisthocotylean monogeneans from carangid fishes off Queensland, Australia and New Caledonia, with a description of *Heteromicrocotyloides megaspinosus* sp. nov. *Acta Parasitologica* **54**: 205-217.

Bilusich, D., Jackway, R.J., Musgrave, I.F., **Tyler, M.J.**, and Bowie, J.H. (2009). The host-defence skin peptide profiles of Peron's Tree Frog *Litoria peronii* in winter and summer. Sequence determination by electrospray mass spectrometry and activities of the peptides. *Rapid. Commun. Mass. Spectrom.* **23**: 2628 – 2636.

Black, A., Carpenter, G. and Pedler, L. (2009). Distribution and habitats of the Thick-billed Grasswren amyornis textilis, subspecies myall. *South Australian Ornithologist* **35** (7): 161-177.

Black, A. B. and Longmore, N. W. (2009). Notes on grasswren eggs in Len Harvey's collection, Museum Victoria. *Australian Field Ornithologist* **26**(4): 132-141.

Blee, Alisa J., **Walshe, Keryn, Pring Allan**, Jamie S. Quinton and Claire E. Lenehan (2010). Towards the identification of plant and animal binders on Australian stone knives. *Talanta*, on line publication through:
<http://dx.doi.org/10.1016/j.talanta.2010.05.044>

Bourne, S. J. & **Reed, E. H.** (2009) The Australian Fossil Mammal sites (Riversleigh/Naracoorte). *World Heritage*. **52**: 46-47.

Bradford, T., **Adams, M.**, Humphreys, W. F., **Austin, A. D.** and **Cooper, S. J. B.** (2010). DNA barcoding of stygofauna uncovers cryptic amphipod diversity in a calcrete aquifer in Western Australia's arid zone. *Molecular Ecology Resources* **10**: 41-50.

Brugger, J., Pring, A., Ryan, C., Reith, F, **Etschmann, B.**, Lui, W., O'Neill, B., and Ngathai, Y. (2009). Probing ore deposit formation: new insight and challenges from nuclear microprobe synchrotron and neutron studies. *Journal of Radiation Physics and Chemistry*, **79**: 151-161, 10.1016/j-radphyschem.2009.03.071

Catalano, S.R., Hutson, K.S., Ratcliff, R.M. & **Whittington, I.D.** (2010). Redescriptions of two species of microcotylid monogeneans from three arripid hosts in southern Australian waters. *Systematic Parasitology* **76**: 211-222.

Clarke, P.A. (2009). An overview of Australian Aboriginal Ethnoastronomy. *Archaeoastronomy. The Journal of Astronomy in Culture*. Vol. **21**: pp.39-58.

Compston, W., Zhang, Z., Cooper, J. A., Ma, G. and **Jenkins, R. J. F.** (2008). Further SHRIMP geochronology on the Early Cambrian of South China. *American Journal of Science*, Dunyi Liu Special Issue: part II, **308**: (4), 399 – 420.

Convey, P., **Stevens, M.I.**, Hodgson, D.A., Hillenbrand, C-D., Clarke, A., Pugh, P.J.A., Smellie, J.L., Cary, S.C. (2009). Antarctic terrestrial life – ancient evolutionary persistence or recent colonisation? *Quaternary Science Reviews*, available online doi:10.1016/j.quascirev.2009.08.015 #equal lead contributors.

Convey, P., **Stevens, M.I.**, Hodgson, D.A., Hillenbrand, C-D., Clarke, A., Pugh, P.J.A., Smellie, J.L., Cary, S.C. (2009). Antarctic terrestrial life – ancient evolutionary persistence or recent colonisation? *Quaternary Science Reviews* **28**: 3035-3048 #equal lead contributors.

Cook, N.J., Ciobanu, C.L., **Pring, A.** Skinner, W., Shimizu, M, Danyushevsky, L. Saini-Eidukat, B and Melcher, F. (2009). Trace and minor elements in sphalerite: a LA-ICPMS study. *Geochimica et Cosmochimica Acta* **73**: 4761-4791.

Craig, B. (2009). The Pacific Cultures Gallery in the South Australian Museum from 1895 to 2007. *Pacific Arts NS.* **8**: 18-31.

Darrenougue, N., de Deckker, P., Fitzsimmons, K., Norman, M., **Reed, E.H.**, van der Kaars, S. and Fallon, S. (2009) A late Pleistocene record of aeolian sedimentation in Blanche Cave, Naracoorte, South Australia. *Quaternary Science Reviews.* **28**: 2600 – 2615.

Dennis, S.D., **R.J. Lavigne** and J.G. Dennis. (2010). Hemiptera (Heteroptera/Homoptera) as prey of robber flies (Diptera: Asilidae) with unpublished records. *Journal of the Entomological Research Society* **12**(1): 27-47.

Deveney M.R. and **Whittington, I.D.**(2010). Three new species of *Benedenia* Diesing, 1858 from the Great Barrier Reef, Australia with a key to species of the genus. *Zootaxa* **2348**: 1-22.

Donnellan, S.C., Couper, P.J., **Saint, K.M.**, **Wheaton, L.** (2009). Systematics of the *Carlia 'fusca'* complex (Reptilia: Scincidae) from northern Australia. *Zootaxa* **2227**: 1–31.

Donnellan, S.C., Aplin, K.P. and **Bertozzi, T.** (2010). Species boundaries in the *Rana arfaki* group (Anura: Ranidae) and phylogenetic relationships to other New Guinean *Rana*. *Zootaxa* **2496**: 49–62.

Elliott, P., Turner, P., Jensen, P., Koltsich, U. and **Pring, A.** (2009). Description and crystal structure of nyholmite, a mineral related to hurealite, from Broken Hill, New South Wales. *Mineralogical Magazine* **73**: 723-735.

Fairbrother, L., Shaoter, J., **Brugger, J.**, Southam, G **Pring, A.**, and Reith, F. (2009). Effects of the cyanide-producing bacterium *chromobacterium violaceum* on ultraflat gold surfaces. *Chemical Geology* **265**: 313-320.

Fyfe, A. (2009). Exploring Spatial Relationships between Material Culture and Language in the Upper Sepik and Central New Guinea. *Oceania* **79**: 121-161.

- Garcia_Bellido, D.C., Paterson, J.R., Edcombe, G.D., **Jago, J.B.**, **Gehling, J.G.** & **Lee, M.S.Y.**, (2009). The bivalved arthropods *Isoxys* and *Tuzoia* with soft-part preservation from the lower Cambrian Emu Bay Shale Lagerstätte (Kangaroo Island, Australia). *Palaeontology*, **52**: 1221-1241.
- Gehling, J. G.**, and Droser, M. L. (2009). Textured organic surfaces associated with the Ediacara biota in South Australia. *Earth Science Reviews* **96**: 196-206.
- Gershwin, L.**, and **Zeidler, W.** (2010). *Csiromedusa medeopolis*: a remarkable Tasmanian medusa (Cnidaria: Hydrozoa: Narcomedusae) comprising a new family, genus and species. *Zootaxa* **2439**: 24-34.
- Godfrey, S. S. & **Hutchinson, M. N.** (2009) Notes on diet and size at maturity of *Ctenotus* (Scincidae) of the mallee of South Australia. *Herpetofauna* (accepted)
- Goldsworthy, S. D., McKenzie, J., Page, B. , Lancaster, M. L., **Shaughnessy, P. D.**, Wynen, L. P., Robinson, S. A., Peters, K. J., Baylis, A. M. M. and McIntosh, R. R. (2009). Fur seals at Macquarie Island: post-sealing colonisation, trends in abundance and hybridisation of three species. *Polar Biology* **32**: 1473-1486.
- Greenslade, P.** (2010). South Shetlands Collembola fauna revisited. Antarctic Science doi:10.1017/S095410200999071X.
- Greenslade P.** (2010). Did ants initiate a population explosion of a coccoid plant pest on an islet in the Coral Sea? Addendum to: Climate variability, biological control and an insect pest outbreak on Australia's Coral Sea islets: lessons for invertebrate conservation. *Journal of Insect Conservation* doi:10.1007/s10841-010-9268-4.
- Greenslade, P.**, Reid, I. and Packer, I. (2010). Short term effects of herbicides on some invertebrate fauna of wheat fields. Soil Biology and Biochemistry on line April 2010 <http://dx.doi.org/10.1016/j.soilbio.2010.03.009>
- Greenslade, P.** and Smith, D. (2010). Short-term effects of wild fire on invertebrates in coastal heathland in southeastern Australia. *Pacific Conservation Biology* **16**.
- Grey, I.E., Macrae, C.M., Mumme, W.G and **Pring, A.** Townendite, (2010). $\text{Na}_8\text{ZrSi}_6\text{O}_{18}$, a new uranium-bearing lovozerite group mineral from the Ilimaussaq alkaline complex, Southern Greenland. *American Mineralogist*, **95**: 646-650.
- Guzik, M. T., **Cooper, S. J. B.**, Humphreys, W. F., and **Austin, A. D.** (2009). Fine-scale comparative phylogeography of a sympatric sister species triplet of subterranean diving beetles from a single calcrete aquifer in Western Australia. *Molecular Ecology* **18**: 3683-3698.
- Guzinski J., Bull, C.M., **Donnellan, S.C.**, Gardner, M.G. (2009). Relatedness and inbreeding of an Australian reptile tick *Bothriocroton hydrosauri*. *Molecular Ecology* **18**: 227–234.

- Halt, M. N.**, Kupriyanova, E. K., **Cooper, S. J. B.**, and **Rouse G. W.** (2009) Species status of *Galeolaria caespitosa* (Annelida, Serpulidae) inferred from nuclear and mitochondrial gene sequences and morphology. *Invertebrate Systematics* **23**: 205-222.
- Hamilton-Bruce, R.J.**, and **Kear, B.P.** (2010). A possible succineid snail from Lower Cretaceous non-marine deposits of the Griman Creek Formation at Lightning Ridge, New South Wales. *Alcheringa*. **34**: 000-000. ISSN 0311-5518.
- Hammer, M.P.**, Unmack, P.J., **Adams, M.**, Johnson, J.B., Walker, K.F. (2010). Phylogeographic structure in the threatened Yarra pygmy perch *Nannoperca obscura* (Teleostei: Percichthyidae) has major implications for declining populations. *Conservation Genetics* **11**: 213-223
- Hendrich, L. and **Watts, C.H.S.** (2010). An endemic predaceous water beetle from the Murchison River in Western Australia – *Antiporus kalbarriensis* sp. n., (Coleoptera: Dytiscidae, Hydroporinae, Hydroporini). *Zootaxa* **2338**: 35-42
- Hutchinson, M. N.**, Doughty, P. & Oliver, P. (2009). Taxonomic revision of the stone geckos (Squamata: Diplodactylidae: *Diplodactylus*) of southern Australia. *Zootaxa* **2167**: 25–46.
- Hutchinson, M. N.** & Eaton, J. (2009). *Diporiphora reginae* (Squamata: Agamidae) in South Australia. *Herpetofauna* **39**: 53-57.
- Jackway, R.J., Maselli, V.M., Musgrave, I.F., Maclean, M.J., **Tyler, M.J.** and Bowie, J.H. (2009). Skin peptides from anurans of the *Litoria rubella* group: sequence determination using electrospray mass spectrometry. Opioid activity of two major peptides. *Rapid Commun. Mass Spectrom.* **23**: 1189-1195.
- Jones, P.J. and **Kruse, P.D.**, 2009. New Middle Cambrian bradoriids (Arthropoda) from the Georgina Basin, central Australia. *Memoirs of the Association of Australasian Palaeontologists* **37**: 55-86.
- Kawakami, T., Butlin, R. K., **Adams, M.**, Paull, D. J. and **Cooper S. J. B.** (2009). Re-examination of a proposed case of stasipatric speciation: phylogeography of the Australian morabine grasshoppers (*Vandiemenella viatica* species group). *Molecular Ecology* **18**: 3429-3442
- Kearn G.C., **Whittington I.D.** and Evans-Gowing R. (2010). A new genus and new species of microbothriid monogenean (Platyhelminthes) with a functionally enigmatic reproductive system, parasitic on the skin and mouth lining of the largetooth sawfish, *Pristis microdon* in Australia. *Acta Parasitologica* **55**: 115-122.
- Kemper, C.**, **Medlin, G. C.** and Bachmann, M. (2010). The discovery and history of the Heath Mouse *Pseudomys shortridgei* (Thomas, 1907) in South Australia. *Transactions of the Royal Society of South Australia* **134**(1): 125-138.
- Kolesik, P.**, Adair, R.J, and Eick, G. (2010) Six new species of *Asphondylia* (Diptera: Cecidomyiidae) damaging flower buds and fruits of Australian *Acacia* (Mimosaceae). *Syst. Ent.* **35**, 250-267.

Kolesik, P., Rice, A.D., and Wirthensohn, M.G. (2009) *Procontarinia pustulata*, a new gall midge (Diptera: Cecidomyiidae) feeding on mango, *Mangifera indica* L. (Anacardiaceae) in northern Australia and Papua New Guinea. *Aust. J. Ent.* **48**, 310-316.

King, R.A. (2009). Ampeliscidae. *In*: Lowry, J.K. & Myers, A.A. (Eds) (2009) Benthic Amphipoda (Crustacea: Peracarida) of the Great Barrier Reef, Australia. *Zootaxa*, **2260**: 132–142.

King, R.A. (2009). Redescription of the freshwater amphipod *Austrochiltonia australis* (Sayce) (Crustacea: Amphipoda, Chiltoniidae), *Memoirs of Museum Victoria* **66**: 85–93.

King, R.A. (2009). Two new genera and species of chiltoniid amphipods (Crustacea: Amphipoda: Talitroidea) from freshwater mound springs in South Australia, *Zootaxa*, **2293**: 35–52.

Kruse, PD, Jago, JB & Laurie, JR, 2009. Recent developments in Australian Cambrian biostratigraphy. *Journal of Stratigraphy* **33**: 35-47.

Lancaster, M., **Cooper, S.J.B.**, Carthew, S., and Taylor, A. (2009). Microsatellite markers for the Common ringtail possum (*Pseudocheirus peregrinus*) and their amplification in other Pseudocheirids. *Permanent Genetic Resources Note* 1535.

Lavigne, R.J, A. Young and Richard Glatz . 2010 (2009). Distribution and behaviour of *Mauropteron pelago* (Walker, 1849) (Insecta, Diptera, Asilidae) in South Australia. *The South Australian Naturalist* **83**(2): 69-77.

Lavigne, R.J. (2010) A new species of *Cerdistus* (Insecta: Diptera: Asilidae) from South Australia. *The South Australian Naturalist* **84**(1): 7–14.

Lee, M.S.Y., Hutchinson, M.N., Worthy, T.H., Archer, M., Tennyson, A.J.D., Worthy, J.P. & Scofield, R.P. (2009). Miocene skinks and geckos reveal long-term conservatism of New Zealand's lizard fauna. *Biology Letters* **5**: 833-837.

Lee, M.S.Y., Hutchinson M.N., Trevor H. Worthy , T.H., Michael Archer M. Tennyson A.J.D. , Worthy J.P., Scofield R.P. (2009). Miocene skinks (Lygosominae) and geckos (Diplodactylidae) reveal long-term conservatism of New Zealand's lizard fauna. *Biology Letters* 6: 833-837 (doi:10.1098/rsbl.2009.0440)

Lee, M.S.Y., Camens, A. B. (2009). Strong and surprising morphological support for the molecular evolutionary tree of mammals. *Journal of Evolutionary Biology* **22**: 2243-2257. doi:10.1111/j.1420-9101.2009.01843.x

Leijes, R., Roudnew, B., Mitchell, J.G. and Humphreys, W.F. (2009). A new method for sampling stygofauna from groundwater fed marshlands. *Speleobiology Notes* **1**: 12-13.

Leijs, R., Roudnew, B. and **Watts, C.H.S.** (2010). *Paroster extraordinarius* sp. nov.: a new stygobitic diving beetle from the Flinders Ranges, with notes on other diving beetles from the hyporheic in South Australia (Coleoptera: Dytiscidae). *Australian Journal of Entomology* **49**: 66-72.

Maclean, M.J., and **Tyler, M.J.** (2009). Temporal release characteristics of cane toad parotoid gland secretions following benign electrical stimulation. *Appl. Herpetol.* **6**: 397– 399.

MacRae, C.M., Wilson, N.C., **Brugger, J.** and Pownceby, M. (2009). Quantitative cathodoluminescence mapping with application to a Kalgoorlie Scheelite. *Microscopy and Microanalysis*, **15**: 222–230, doi:10.1017/S1431927609090308.

McArthur, A.J. (2009). New species, new status and new synonymy for *Camponotus* from Australia (Hymenoptera: Formicidae) *Myrmecol. News Wien* **12**: 273-286.

McDowell, M. C., and **Medlin, G. C.** (2009). Using the diet of the barn owl (*Tyto alba*) as an indicator of small vertebrate abundance in the Channel Country, south-western Queensland. *Australian Mammalogy* **31**: 75–80.

McGaughran, A., Convey, P., Redding, G.P., **Stevens, M.I.** (2009). Temporal and spatial metabolic rate variation in an Antarctic springtail. *Journal of Insect Physiology*, available online doi:10.1016/j.jinsphys. 2009.09.003

McGaughran, A., Torricelli, G., Carapelli, A., Frati, F., **Stevens, M. I.**, Convey, P., Hogg, I. D. (2009). Contrasting phylogeographic patterns for springtails reflect different evolutionary histories between the Antarctic Peninsula and continental Antarctica. *Journal of Biogeography* available online doi:10.1111/j.1365-2699.2009.02178.x

McGaughran, A., Convey, P., Redding, G.P., **Stevens, M.I.** (2009). Temporal and spatial metabolic rate variation in an Antarctic springtail. *Journal of Insect Physiology* **55**: 130-135.

McGaughran, A., Convey, P., Redding, G.P., **Stevens, M.I.** (2010) Temporal and spatial metabolic rate variation in an Antarctic springtail. *Journal of Insect Physiology* **56**: 57-64.

McGaughran, A., Convey, P., **Stevens, M.I.**, Chown, S.L. (2010) Metabolic rate, genetic and microclimate variation among springtail populations from sub-Antarctic Marion Island. *Polar Biology* **33**: 909-918.

Madden, C.P. (2010). Key to genera of larvae of Australian Chironomidae (Diptera). *Museum Victoria Science Reports* **12**: 1–31.

Madden, C.P. (2010) Aquatic macro-invertebrates of Fleurieu Peninsula Parks *The South Australian Naturalist* **84** (1): 31-37.

Malekian, M., **Cooper, S. J. B.**, Norman, J. A., Christidis, L., and Carthew, S. M. (2010). Molecular systematics and evolutionary origins of the genus *Petaurus* (Marsupialia: Petauridae) in Australia and New Guinea. *Molecular Phylogenetics and Evolution* **54**: 122-135.

Matthews, E. G. and Monteith, G. B. (2010). *Monteithium storeyi*, a new species of Adeliini (Coleoptera: Tenebrionidae) from the wet tropics of Queensland, Australia. *Australian Entomologist* **36**(4): 201 – 206.

Mecke, S., Doughty, P., **Donnellan, S.C.** (2009). A new species of *Eremiascincus* (Reptilia: Squamata: Scincidae) from the Great Sandy Desert and Pilbara Coast, Western Australia and reassignment of eight species from *Glaphyromorphus* to *Eremiascincus*. *Zootaxa* **2246**: 1-20.

Millar, N.L., Bradley, T.A., Walsh, N.A., Appleyard, R.C., **Tyler, M.J.** and Murrell, G.A.C. (2009). Frog glue enhances rotator cuff repair in a laboratory cadaveric model. *J.Shoulder Elbow Surgery*. **18**: 639 – 645.

Mills, S.J., Birch, W.D., Kampf A.R. Christy, A.G., Pluth, J.J. **Pring, A.**, Raudsepp, M. and Chen, Y-S., (2010). Kapundaite, $(\text{Na,Ca})_2\text{Fe}^{3+}_4(\text{PO}_4)_4(\text{OH})_3\cdot\text{H}_2\text{O}$, a new phosphate species from Toms quarry, South Australia: Description and structural relationship to mélonjosephite. *American Mineralogist*, **95**: 754-760.

Mulder, E. and **Smales, L.R.** (2009). Parasites of *Rattus coletti* (Rodentia: Muridae) from the Adelaide River floodplain, Northern Territory, and comparison with assemblages in other *Rattus* species. *Australian Journal of Zoology* **57**: 377-383.

Mumme, W.G., Grey, I.E., Birch, W.D., **Pring, A.**, Bougerol, C. and Wilson, N.C. (2010). Cousellite, $\text{CaNa}_3\text{AlMg}_3\text{F}_{14}$ a new rhombohedral pyrochlore with 1:3 ordering in both A and B sites from the Cleveland Mine, Tasmania, Australia. *American Mineralogist*. **95**: 736-740

Myers, S.A., Gardner, M.G., Kleindorfer, S., **Donnellan, S.C.** (2009). New Holland Honeyeater (*Phylidonyris novaehollandiae*) microsatellites; isolation and characterisation of 14 novel markers using an enrichment method. *Molecular Ecology Resources* **9**: 1052-4. (doi: 10.1111/j.1755-0998.2009.02572.x).

New, T.R., Yen,A.L., Sands, D.P.A., **Greenslade, P.**, Neville, P.J.,York, A.,Collett, N.G. (2010). Planned fires and invertebrate conservation in south east Australia. *Journal of Insect Conservation*. DOI 10.1007/s10841-010-9284-4.

Ninnes, C. E., Waas, J. R., Ling, N., Nakagawa, S., Banks, J., Bell, D., Bright, A., Carey, P. W., Chandler, J., Hudson, Q., Ingram, J., Lyall, K., Morgan, D., **Stevens, M. I.**, Wallace, J., Möstl, E. (2009). Comparing plasma and faecal measures of steroid hormones in Adelie penguins *Pygoscelis adeliae*. *Journal of Comparative Physiology B*, available online doi: 10.1007/s00360-009-0390-0

- Ninnes, C. E., Waas, J. R., Ling, N., Nakagawa, S., Banks, J., Bell, D., Bright, A., Carey, P. W., Chandler, J., Hudson, Q., Ingram, J., Lyall, K., Morgan, D., **Stevens, M. I.**, Wallace, J., Möstl, E. (2009). Comparing plasma and faecal measures of steroid hormones in Adelie penguins *Pygoscelis adeliae*. *Journal of Comparative Physiology B* **180**, 83-94.
- Oliver, P. & **Hutchinson, M.** (2009). An adult microphthalmic gekkotan, *Pygopus schraderi*. *Herpetological Review* (accepted).
- Ottewell, K.M., **Donnellan, S.C.**, Lowe, A.J., Paton, D.C. (2009). Predicting reproductive success of insect- versus bird-pollinated scattered trees in agricultural landscapes. *Biological Conservation* **142**: 888-898.
- Paar, W. **Pring A.**, Moëlo, Y., Stanley, C. J. Putz, H., Topa, D. and Roberts A.C. (2009). Daliranite, $\text{PbHgAs}_2\text{S}_6$, a new sulphosalt from the Zarshouran Au-As deposit, Takab region, Iran. *Mineralogical Magazine* **73**: 871-881, 2009.
- Paterson, J.R., Edgecombe G.D., García-Bellido, D.C., Jago, J.B., and **Gehling, J.G.**, (2010). Nektaspid arthropods from the Lower Cambrian Emu Bay Shale Lagerstätte, South Australia, with a reassessment of Lamellipedian relationships. *Palaeontology*, **53**: 377-402.
- Pawson, D.L., Pawson D.J. and **King, R.A.** (2010). A taxonomic guide to the Echinodermata of the South Atlantic Bight, USA: 1. Sea cucumbers (Echinodermata: Holothuroidea). *Zootaxa* 2449: 1-48.
- Perkins, E.M., **Donnellan, S.C.**, **Bertozzi, T.**, **Chisholm, L.A.** and **Whittington, I.D.** (2009). Looks can deceive: Molecular phylogeny of flatworm ectoparasites (Monogenea: Capsalidae) does not reflect current morphological classification. *Molecular Phylogenetics and Evolution* **52**: 705-714. doi:10.1016/j.ympev.2009.05.008.
- Phillips, M.J., Bennett, T., and **Lee, M.S.Y.** (2009). Molecules and morphology suggest a recent, amphibious ancestry for echidnas. *Proceedings of the National Academy of Sciences* 106: 17089-17094, doi:10.1073/pnas.0904649106
- Phillips, M.J. and **Lee, M.S.Y.** (2010). How recently did modern monotremes diversify? *Proceedings of the National Academy of Sciences* (advance online - doi: 10.1073/pnas.0913152107).
- Potapov, Mikhail, Babenko, Anatoly, Fjellberg Arne and **Greenslade, Penelope.** (2009). Taxonomy of the *Proisotoma* complex. II A revision of the genus *Subisotoma* and a description of *Isotopenola* gen.nov. (Collembola: Isotomidae). *Zootaxa* **2314**: 1-40.
- Potapov, Mikhail, B., **Greenslade, Penelope** (2010). Redescription of *Folsomia loftyensis* Womersley with notes on the sensillary arrangement of the genital segment in the genus (Collembola: Isotomidae). *Zoologischer Anzeiger* doi:10.1016/j.jcz.12010.01.004

Prideaux, G. J., Ayliffe, L. K., DeSantis, L. R. G., Schubert, B. W., Murray, P. F., Gagan, M. K., and Cerling, T. E. (2009). Extinction implications of a chenopod browse diet for a giant Pleistocene kangaroo. *Proceedings of the National Academy of Sciences USA* **106**: 11646–11650.

Prideaux, G. J. and Warburton, N. M. (2009). *Bohra nullarbora* sp. nov., a second tree-kangaroo (Marsupialia: Macropodidae) from the Pleistocene of the Nullarbor Plain, Western Australia. *Records of the Western Australian Museum* **25**: 165–178.

Rabosky, D.L., Talaba, A.L., **Donnellan, S.C.**, Lovette, I.J. (2009). Molecular evidence for hybridization between two Australian desert skinks, *Ctenotus leonhardii* and *Ctenotus quattuordecimlineatus* (Scincidae: Squamata). *Molecular Phylogenetics and Evolution* **53**: 368-377. (doi:10.1016/j.ympev.2009.06.020).

Reed, E. H. (2009) Decomposition and disarticulation of kangaroo carcasses in caves at Naracoorte, South Australia. *Journal of Taphonomy*. **7**(4): 265-283.

Reed, E. H. & Bourne, S. J. (2009) Pleistocene fossil vertebrate sites of the South East region of South Australia II. *Transactions of the Royal Society of South Australia*. **133**(1): 30-40.

Rehan, S. M., Chapman, T. W., Craigie, A., **Cooper, S. J. B.** and Schwarz, M. P. (2010). Phylogeny, historical biogeography and cladogenesis of the small carpenter bees (Hymenoptera: Apidae: Ceratinini). *Molecular Phylogenetics and Evolution* **55**: 1042-1054.

Reith, F., Etschmann, B, Grose, C., Moors, H, Bentamne, MA, Monieus, P. Grass, G., Doonan, C., Vogt, S., Lai, G., Martinez-Criado, G., Geirge, G.N., Nies, D.H., **Pring, A.**, Southam, G., and **Brugger J.** How bacteria form Gold: Mechanisms of gold biomineralization in *Cupriatdus metallidurns*. *Proceeding of the National Academy of Science*, **106**: 17757-17762, 2009. doi/10.1073/pnas.0904583106

Richards, S.J., Hoskin, C., Cunningham, M., McDonald, K., **Donnellan, S.C.** (2010). Taxonomic assessment of the Australian and New Guinean populations of the green-eyed treefrogs *Litoria eucnemis* and *Litoria genimaculata*. *Zootaxa* **2391**: 33-46.

Rosauer, D., Laffan, S.W., Crisp, M.D., **Donnellan, S.C.**, Cook, L.G. (2009). Phylogenetic endemism: a new approach for identifying geographical concentrations of evolutionary history. *Molecular Ecology* **18**: 4061-4072. (doi: 10.1111/j.1365-294X.2009.04311.x).

Sanders, K.L., **Lee, M.S.Y.** (2010). Molecular divergence times and the affinities of pentastomids and branchiurans within arthropods. *Systematics and Biodiversity* **8**: 63-74.

Searle, J.B., Jamieson, P.M., Gündüz, I., **Stevens, M.I.**, Jones, E.P., Gemmill, C.E.C., King, C.M. (2009) The diverse origins of New Zealand house mice. *Proceedings of the Royal Society B* **276**: 209-217, equal contributions.

Shaughnessy, P. D. and Briggs, S. V. (2009). Tourists and Little Penguins *Eudyptula minor* at Montague Island, New South Wales. *Corella* **33**: 25-29.

Shaughnessy, P. D., Dennis, T.E., Dowie D., McKenzie, J. and McIntosh, R. R. (2009). Status of small colonies of the Australian sea lion *Neophoca cinerea* on Kangaroo Island, South Australia. *Australian Zoologist* **35**: 82-89.

Shepherd, S.A., Brook, J.B. and Xiao, Y. (2010) Environmental and fishing effects on the abundance, size and sex ratio of the blue-throated wrasse, *Notolabrus tetricus*, on South Australian coastal reefs. *Fisheries Management & Ecology* **17**: 209–220.

Shepherd, S.A., Watson, J.E. Womersley, H.B.S. and Carey, J. (2009) Long-term changes in macroalgal assemblages after increased sedimentation and turbidity in Western Port, Victoria, Australia. *Botanica Marina* **52**: 195-206.

Sistrom, M. J., **Hutchinson, M. N.**, **Donnellan, S. C.** And Hutchinson, R. G. (2009) Taxonomic review of the genus *Gehyra* (Squamata: Gekkonidae) in South Australia. *Zootaxa* **2277**: 14–32.

Sistrom, M.J., **Hutchinson, M.N.**, Hutchinson, R.G., **Donnellan, S.C.** (2009). Molecular phylogeny of Australian *Gehyra* (Squamata: Gekkonidae) and taxonomic revision of *Gehyra variegata* in south-eastern Australia. *Zootaxa* **2277**: 14–32.

Skinner, A., Lee, M.S.Y. (2009). Body form evolution in the scincid lizard clade *Lerista* and the mode of macroevolutionary transitions. *Evolutionary Biology* **36**: 292-300 (doi:10.1007/s11692-009-9064-9)

Skinner, A., Lee, M.S.Y. (2010). Inconsistent ancestors and character state reconstructions. *Biology Letters* **6**:354-358 [advance online: doi 10.1098/rsbl.2009.0840]

Skuballa, J., Taraschewski, H., Petney, T. N., Pfaffle, M. and **Smales L. R.** (2009). The avian acanthocephalan *Plagiorhynchus cylindraceus* (Palaeacanthocephala) parasitizing the European hedgehog (*Erinaceus europaeus*) in Europe and New Zealand. *Parasitology Research* DOI 10.1007/s00436-009-1681-9

Smales, L. R. (2009)a *Edmondsacanthus blairi* n.gen., n. sp. (Acanthocephala: Rhadinorhynchidae) parasitic in the intestine of the eastern rainbow fish *Melanotaenia splendida* (Peters, 1866). *Transactions of the Royal Society of South Australia* **133**: 284-287.

Smales, L. R. (2009)b Helminth biodiversity in the genus *Melomys* (Murinae: Hydromyini) from Australia and New Guinea. *Transactions of the Royal Society of South Australia* **133**: 265-273.

- Smales, L.R.** (2010)a. The gastrointestinal helminths of *Lorentzimys nouhuysi* (Rodentia: Muridae) with descriptions of two new genera and three new species (Nematoda) from Papua New Guinea. *Journal of Parasitology*.
- Smales L.R.** (2010) b. Plagiorhynchidae (Acanthocephala) including the description of a new species from birds from the Republic of the Cote D'Ivoire. *Review Suisse de Zoologie* **117**: 153-158.
- Smales L.R.** (2010) c. A new species of *Porrorchis* (Acanthocephala: Plagiorhynchidae) from *Myoictis wallacii* (Marsupialia: Dasyuridae) from Aru Islands, Indonesia. *Transactions of the Royal Society of South Australia* **134**.
- Stevens, M.I.,** Hicks, B.J. (2009) Mitochondrial DNA reveals monophyly of New Zealand's *Gobiomorphus* (Teleostei: Eleotridae) among a morphological complex. *Evolutionary Ecology Research* **11**, 109-123.
- Stevens, M.I.,** Gordon, S. (2009) The Latitudinal Gradient Project (LGP) – a first for Antarctic multidisciplinary research. *Antarctic* **27**: 70-71.
- St Pierre, E., Zhao, J. and **Reed, E. H.** (2009) Expanding the utility of Uranium-series dating of speleothems for archaeological and palaeontological applications. *Journal of Archaeological Science*. **36** (7): 1416-1423.
- Stamation, K. A., Croft, D. B., **Shaughnessy, P. D.**, Waples, K. A. and Briggs, S. V. (2010). Behavioral responses of humpback whales (*Megaptera novaeangliae*) to whale-watching vessels on the southeastern coast of Australia. *Marine Mammal Science* **26**: 98-122.
- Sung, Y-Y., Cook, C.L., **Pring, A, Brugger, J,** Skinner, W, Nugus, M. Invisible gold in arsenian pyrite and arsenopyrite from the Sunrise Dam gold deposit, Eastern Goldfields Province, Western Australia. *Mineralium Deposita* **44**: 765-791, 2009.
- Sutton, Peter.** (2009). Australian anthropologists and political action 1925-1960. *Oceania* **79**: 202-217.
- Sutton, Peter.** (2009). Radical hope: correspondence. *Quarterly Essay* **36**:112-115.
- Sutton, Peter** (2010). Aboriginal spirituality in a new age. In Carolyn Schwarz and Françoise Dussart (eds), *Engaging Christianity in Aboriginal Australia*. Special issue of *The Australian Journal of Anthropology* **21**:71-89.
- Sutton, Peter** (2010). Ursula McConnel's tin trunk: A remarkable recovery. *Transactions of the Royal Society of South Australia* **134**:101-114.
- Tappert, R, Foden J and **Pring A.** (2009). The Mineralogy of the Yaringie Hill meteorite – a new H5 chondrite from South Australia. *Meteoritics and Planetary Sciences*. **44**: 1687-1693.

- Testemale, D., **Brugger, J.**, Liu, W., **Etschmann, B.**, Hazemann, J.-L. (2009). An XAS study of the chloride complexing of Fe(II) in brines to supercritical conditions. *Chemical Geology*, **264**: 295–310. <http://dx.doi.org/10.1016/j.chemgeo.2009.03.014>.
- Theiss S.M., Kyne P.M. & **Chisholm L.A.** (2010). Distribution of the porcupine ray *Urogymnus asperrimus* (Bloch & Schneider, 1801) in Australian waters, with new records from Queensland. *Memoirs of the Queensland Museum: Nature* **55**: 101-105.
- Timms, Brian V and **Hudson, Peter**. (2009). The brine shrimps (*Artemia* and *Parartemia*) of South Australia, including descriptions of four new species of *Parartemia* (Crustacea: Anostraca: Artemiina). *Zootaxa* **2248**: 47-68.
- Tyler, M.J.**, (2009) Frogs and Toads as Experimental Animals. ANZCCART Fact Sheet A13. Revised Edition.
- Vaughan D.B. & **Chisholm L.A.** (2009). Three *Dendromonocotyle* species (Monogenea: Monocotylidae) reported from captive rays, including *D. lotteri* sp. n. from *Himantura gerrardi* (Elasmobranchii: Dasyatidae) in the public aquarium at the Atlantis resort, Dubai. *Folia Parasitologica* **56**: 99-106.
- Vaughan D.B. & **Chisholm L.A.** (2010). *Heterocotyle tokoloshei* sp. nov. (Monogenea: Monocotylidae) from the gills of *Dasyatis brevicaudata* (Dasyatidae) kept in captivity at Two Oceans Aquarium, Cape Town, South Africa: description and notes on treatment. *Acta Parasitologica* **106**: 431–437.
- Watts, C.H.S.** (2010). Revision of the genus *Macrohelodes* (Scirtidae: Coleoptera; Insecta). Transactions of the Royal Society of South Australia **134**: 19-52.
- Watts, C.H.S.** (2010). Revision of Australian *Prionocyphon* Redtenbacher (Scirtidae: Coleoptera). Transactions of the Royal Society of South Australia **134**: 53-86.
- Watts C.H.S.** and J. McRae (2010). The identity of *Haliplus* (Coleoptera: Haliplidae) from the Pilbara region of Australia, including the description of four new species. *Records of the Western Australian Museum* **25**: 387-398.
- Weaver, H.J. and **Smales, L.R.** (2009). The parasite assemblages of *Zygomys argurus* (Thomas, 1889) (Muridae: Murinae) from northern Australia. *Australian Journal of Zoology* **57**: 429-432.
- Whittington I.D.** (2010). Revision of *Benedeniella* Johnston, 1929 (Monogenea: Capsalidae), its assignment to Entobdellinae Bychowsky, 1957 and comments on subfamilial composition. *Zootaxa* **2519**: 1-30.
- Xia, F. O'Neill, B, Ngothai, Y., Peak, J., **Tenaillieu, C.**, **Etschmann, B.**, Qian, G., **Brugger, J.**, Struder, A., Olsen, S., and **Pring, A.** (2010). A thermosyphon driven hydrothermal flow-through cell for in situ and time- resolved neutron diffraction studies. *Journal of Applied Crystallography*, **43**: 511-519.

Xia F., **Brugger, J.**, Ngothai, Y., O'Neill, B, Chen, G., and., **Pring, A.**, (2009). Three dimensional ordered arrays of nanozeolites with uniform size and orientation by a pseudomorphic coupled dissolution-precipitation replacement route. *Crystal Growth and Design*, **9**: 4902-4906. DOI: 10.1021/cg900691a.

Ye, Q., **Hammer, M.P.**(2009). Fishes. In: J.T. Jennings (Ed) Natural History of the Riverland and Murray Lands, Royal Society of South Australia Inc., Adelaide, pp 334-352.

Yves Alarie, Mariano C., Michat, C. and **Watts, CH.S.** (2009). Larval morphology of *Paroster* Sharp, 1882 (Coleoptera: Dytiscidae: Hydroporinae): reinforcement of the hypothesis of monophyletic origin and discussion of phenotypic accommodation to a hypogaean environment. *Zootaxa* **2274**: 1-44.

Zhang Feng, Deharveng, L., **Greenslade, Penelope** and Chen, Jian-Xiu. (2009). Revision of the the genus *Acanthocyrtus* (Collembola: Entomobryidae) and a description of a new genus from Eastern Asia. *Zoological Journal of the Linnean Society*. **157**: 495–514.

Zeidler, W., and DeBroyer, C. (2009). Catalogue of the Hyperiid Amphipoda (Crustacea) of the Southern Ocean with distribution and ecological data. In: DeBroyer, C.(Ed.), Census of Antarctic Marine Life: Synopsis of the Amphipoda of the Southern Ocean, Volume 3. *Bulletin de L'Institut Royal des Sciences Naturelles de Belgique, Biologie* **79**, suppl. 1: 1-96, 4 plates.

Zhao, J., **Brugger, J.**, **Grundler, P.**, Xia, F., Chen., G., and **Pring, A.** (2009). Mechanism and Kinetics of a mineral transformation under hydrothermal conditions: calaverite to metallic gold. *American Mineralogist*, **94**: 1541-1555.

3.4 Other publications (book reviews, conference proceedings, contributed papers etc.)

Boll V.M. (2009). Informed consent form. In Janke, T., Holcombe, S. and M. Davies. *Indigenous Ecological Knowledge and Natural Resources in the Northern Territory. Report on the Current Status of Indigenous Intellectual Property*. A report commissioned by the Natural Resources Management Board (NT) Component 3 (of 3). Terri Janke and Company Pty Ltd: 185-187.

Bolton J. and **A. Fyfe**. (2010). String bag patterns and colour dyes of the upper Sepik basin and Border Mountains. Added to USCNGP website under 'Papers'.

Bradford, T., Guzik, M., Humphreys, W.F., **Austin A.D.** & **Cooper, S.J.B.** (2009) Modes of speciation in stygofauna from a single calcrete aquifer. The Combined Australian Entomological Society's 40th AGM & Scientific Conference, Society of Australian Systematic Biologists and 9th Australian Biodiversity and Conservation conference, Darwin, Australia, September, 2009.

Byrne, M., Yeates, D.K., L. Joseph, L., M. Kearney, M., J. Bowler, J., M.A. Williams, M.A., **Cooper, S.J.B.**, **Donnellan, S.C.**, Keogh, S., **Leijs, R.**, J. Melville, D. Murphy, N Porch, K.-H. Wyrwoll (2009) Evolution in the Australian arid zone. The Combined Australian Entomological Society's 40th AGM & Scientific Conference, Society of Australian Systematic Biologists and 9th Australian Biodiversity and Conservation conference, Darwin, Australia, September, 2009.

Catalano S., Hutson K.S. & **Whittington I.D.** (2009). Picky parasites: patterns of infection in three important endemic fishes (*Arripis* spp.). The Annual Scientific Meeting of the Australian Society for Parasitology Inc. and the ARC/NHMRC Research Network for Parasitology Annual Conference, The University of Sydney, Sydney, NSW, Australia. (Abstract with program; P28), 12-15 July 2009.

Cooper, S.J.B. 2 x 45 min talks to school students at the SA Museum as part of Science Week, August, 2009.

Cooper, S.J.B., Humphreys, W.F. & Harvey, M.S. (2009) A new troglifauna from the calcrete islands of central Western Australia. The Combined Australian Entomological Society's 40th AGM & Scientific Conference, Society of Australian Systematic Biologists and 9th Australian Biodiversity and Conservation conference, , Darwin, Australia, September, 2009.

Cooper, S.J.B. Talk to Australian Centre for Evolutionary Biology and Biodiversity group during mini-symposium, December, 2009.

Cooper, S.J.B. Lecture to Cindy Bottema's Animal Science class and tour of Science Centre, February, 2010.

Cooper, S.J.B. Opening of new biodiversity gallery: talks with public

Cooper, S.J.B. Organisation and presentation of a one day workshop in Perth on subterranean fauna to Environmental consultancies, mining companies and government representatives, WA Museum, Perth.

Cooper, S.J.B. Organisation and presentation of talks and practical demonstrations for a four day workshop on population genetics and phylogeography to national Ph.D students

Cooper, S.J.B. Participation in SA Museum roadshow to APY-lands, northern SA, presentation of ~20 talks/presentations to school kids, May 2010.

Craig, B. (2009). Can we rely on Sotheby's? Oceanic Art Society Newsletter 14 (4): 4-6.

Craig, B. (2009). Scanned, documented and uploaded 235 field photographs to 'Gallery/Photosets' of the Upper Sepik-Central New Guinea Project website (www.uscngp.com).

Craig, B (2009). Revised text, 50 field photographs, 13 Figures, and 54 drawings for 'Introduction....' and for 'Legends of the Amto of Simaiya Valley, West Sepik Province, PNG' and 'Legends of the Abau of Idam Valley, West Sepik Province, PNG'. Added to USCNGP website under 'Papers'.

Craig, B (2010). Edited and annotated translations from German of Richard Thurnwald's 1914 and 1916 reports of his explorations in the upper Sepik and central New Guinea – Added to USCNGP website under 'Papers'.

Craig, B. (2010). Tally Systems of the Upper Sepik and Central New Guinea. Added to USCNGP website under 'Papers'.

Demetras, N.J., Hogg, I.D., **Stevens, M.I.**, Ross, P.M., Banks, J.C. (2009) Distribution of mtDNA haplotypes for the springtail *Gomphiocephalus hodgsoni* relative to physical, chemical and biological characteristics in the southern Dry Valleys, Victoria Land. Xth SCAR Biology Symposium, Sapporo, Japan, 2009.

Deveney M.R., Williams R.E. & **Whittington I.D.** (2009). Treating monogeneans in aquaculture: how do I treat you? Let me count the ways. The 6th International Symposium on Monogenea, Cape Town, South Africa. (Abstract with program; invited presentation I3), 2-7 august, 2009.

Domingues M.V., **Whittington I.D.** and **Chisholm L.A.** (2009). Phylogeny and coevolution of the Hexabothriidae Price, 1942: A new hypothesis twenty years after the Boeger & Kritsky proposal. *International Symposium on Monogenea (ISM6)*, Cape Town, South Africa, August 2009.

Domingues M.V., **Whittington I.D.** and **Chisholm L.A.** (2009). The Hexabothriidae database: a time for integration. *International Symposium on Monogenea (ISM6)*, Cape Town, South Africa, August, 2009.

Domingues M.V., **Chisholm L.A.** and **Whittington I.D.** (2009). New species of Hexabothriidae Price, 1942 from Australia, Indonesia, Malaysia and New Zealand with a proposal of a new genus. *International Symposium on Monogenea (ISM6)*, Cape Town, South Africa, August, 2009.

Domingues M.V., **Whittington I.D.** and **Chisholm L.A.** (2009). Phylogeny and coevolution of the Hexabothriidae Price, 1942: A new hypothesis twenty years after the Boeger & Kritsky proposal. *International Symposium on Monogenea (ISM6)*, Cape Town, South Africa, August, 2009.

Gara, T. 'They died like flies' - Spanish Influenza and its impact on Aboriginal people in South Australia, 1919. Australian and New Zealand Society of the History of Medicine Conference, Perth, September 2010.

Gara, T. Ivaritji and her relatives. Kaurna people on Yorke Peninsula. SA State History Conference, Adelaide, 2nd August 2009.

Gehling, J.G. "Tracks through Time" Public talk for Palaeontology Week in Kingston, Kangaroo Island, 25 March 2010.

Gehling, J.G. Invited paper entitled: The role of microbial mats and organic matter in early diagenesis of Ediacaran siliciclastic sediment. SEPM Field Conference: "Microbial mats in siliciclastic sediments (Archean to Recent)"; Denver Colorado, 21-24 May, 2010.

Gehling, J.G. Address at International Commission on Stratigraphy meeting, Prague: Neoproterozoic Subcommission: Exploring an Ediacaran Subdivision, 31 May – 3 June 2010.

Gemmil, C.E.C., **Stevens, M.I.**, Clarke, A.C., Clarkson, F.M. Are current restoration practices capturing levels of genetic diversity observed in the wild? URBAN RESTORATION WORKSHOP, University of Waikato (oral presentation), 7-9 July 2009.

Goldsworthy, S. D., Page, B., **Shaughnessy, P. D.**, Hamer, D., Peters, K. D., McIntosh, R. R., Baylis, A. M. M. and McKenzie, J. (2009). Innovative solutions for aquaculture planning and management: addressing seal interactions in the finfish aquaculture industry. FRDC Project number: 2004/201. SARDI Aquatic Sciences Publication Number F2008/000222-1. SARDI Research Report Series No. 288. 291 pp

Goldsworthy, S. D., Page, B., **Shaughnessy, P. D.** and Linnane, A. (2010). Mitigating seal interactions in the SRLF and the Gillnet sector SESSF in South Australia. SARDI Aquatic Sciences Publication No. F2009/000613-1. SARDI Research Report Series No. 405. 215 pp.

Green, T.G.A., Cary, S.C., Hogg, I.D., **Stevens, M.I.**, et al. Predicting Biocomplexity in Dry Valley Ecosystems (TABS): An IPY Project. Annual Antarctic Conference 2009, University of Auckland (oral presentation), 1-3 July 2009.

Guzik, M.T., **M. Adams**, N.P. Murphy, **S.J.B. Cooper** & **A.D. Austin** (2009) Great Artesian Basin mound springs reveal cryptic species in the ancient isopod *Phreatomerus latipes*. The Combined Australian Entomological Society's 40th AGM & Scientific Conference, Society of Australian Systematic Biologists and 9th Australian Biodiversity and Conservation conference, Darwin, Australia, September, 2009.

Hogg, I.D., **Stevens, M.I.**, et al. Antarctic Springtails. Annual Antarctic Conference 2009, University of Auckland (poster presentation), 1-3 July 2009.

Humphreys W, Page T, **Stevens M.I.**, Foster R (2009) Scales of movement in anchialine systems: progress in the eastern Indian Ocean. AnchialineEcosystemsR: Reflections and Prospects Palma de Mallorca, Spain, November 2009.

Hutson K.S. & **Whittington I.D.** (2009). Where the wild things are: predicting which parasites from wild fish may be problematic in sea-cage aquaculture. FRDC Aquatic Animal Health National Aquatic Animal Health Subprogram Scientific Conference, Rydges Esplanade Resort, Cairns, Queensland, Australia. (Abstract with program), 22-24 July 2009.

Hutson, K.S., Catalano, S.R. & **Whittington, I.D.** (2010). Attract, aggregate and accumulate: wild fishes as potential parasite reservoirs for sea-caged stocks. Australasian Aquaculture, Hobart, 25 May 2010.

Kawakami, T., R. K. Butlin, **M. Adams**, **K.M. Saint** & **S.J.B. Cooper** (2009) Genetic analysis of a chromosomal hybrid zone in the Australian morabine grasshoppers (*Vandiemenella viatica* species group). (poster presentation), European Society for Evolutionary Biology Conference, Turin, Italy, August, 2009.

Kawakami, T., R. K. Butlin, M. Adams, **K.M. Saint** and **S.J.B. Cooper** (2009) Genetic analysis of a chromosomal hybrid zone in the Australian morabine grasshoppers (*Vandiemenella viatica* species group). (poster presentation), The Combined Australian Entomological Society's 40th AGM & Scientific Conference, Society of Australian Systematic Biologists and 9th Australian Biodiversity and Conservation conference, Darwin, Australia, September, 2009.

King, R.A. and Murphy, N.P. **25-28 September 2009:** Phenotypic similarities and differentiation among mound spring amphipods. Combined Australian Entomological Society's 40th AGM & Scientific Conference, Society of Australian Systematic Biologists, 9th Invertebrate Biodiversity & Conservation Conference. Darwin, Northern Territory, Australia (oral presentation).

Lancaster, M., **Cooper**, S., Carthew, S. & Taylor, A. (2009) Genetic structure and diversity of the Common ringtail possum in a fragmented Australian landscape. (oral and poster presentation), The 10th International Congress of Ecology, Brisbane, Australia, August, 2009.

Lavigne, R. (2010). Reviews of papers for Scientific Journals, Journal of the Entomological Research Society (2), American Midland Naturalist (1), Zootaxa (1)

McGaughan, A., Convey, P., **Stevens, M.I.**, Chown, S.L. Metabolic rate, genetic and microclimate variation among springtail populations from sub-Antarctic Marion Island. Xth SCAR Biology Symposium, Sapporo, Japan, 2009.

Minardi D., **Whittington I.D.**, Kearns G., Paladini G., Shinn A.P., Fioravanti M.L. & Bron J.E. (2009). Preliminary observations on the reproductive system of *Neoentobdella diadema* (Monticelli, 1902) Kearns & Whittington, 2005 (Monogenea: Capsalidae). The 6th International Symposium on Monogenea, Cape Town, South Africa. (Abstract with program; presentation C14), 2-7 August, 2009.

Mooney A.J., Lackenby J.A. and **Whittington I.D.** (2009). Tales about Monogenea in kingfish (*Seriola lalandi*) culture from South Australia. The 6th International Symposium on Monogenea, Cape Town, South Africa. (Abstract with program; presentation C24), 2-7 August, 2009.

Porco, D., Deharveng, L., Decaens, T., **Stevens, M.I.**, James, S., Van Vuuren, B., Butt, K., Rougerie, R., Hebert, P., BARCODING INVASIVES: A NEW TOOL FOR INVASION MONITORING IN SOIL. Third International Barcode of Life Conference, Mexico City (oral presentation), 7-13 November, 2009.

Perkins L.M., **Bertozi T.**, **Donnellan S.C.** & **Whittington I.D.** (2009). An unfaithful family: comparison of capsalid (Monopisthocotylea) and host phylogenies reveals extensive independent radiation. The 6th International symposium on Monogenea, Cape Town, South Africa. (Abstract with program; presentation C9), 2-7 August, 2009.

Shaughnessy, P. D. (2010). Abundance of New Zealand fur seal pups on Kangaroo Island in 2009-10 and of Australian sea lion pups at The Pages Islands in 2009. Report to Department for Environment and Heritage, South Australia. 35 pp.

Shinn A., Paladini G., **Whittington I.D.**, Harris P., Littlewood T., Bakke T., Harris J., Christison K., Rubio-Godoy M., Conway D. & Bron J. (2009). MonoDB: first steps in the provision of a centralised web-based resource for the Monogenea. The 6th International Symposium on Monogenea, Cape Town, South Africa. (Abstract with program; invited presentation I5), 2-7 August, 2009.

Shinn A., **Whittington I.D.**, Christison K.W. & Bron J.E. (2009). Man, monsters and machines: managing malicious monogenean miscreants. The 6th International Symposium on Monogenea, Cape Town, South Africa. (Abstract with program; presentation C25), 2-7 August, 2009.

Stevens, M.I., Greenslade, P., Porco, D., Deharveng, L. Barcoding Australasian Collembola. The Combined Australian Entomological Society's 40th AGM & Scientific Conference, Society of Australian Systematic Biologists, 9th Invertebrate Biodiversity & Conservation Conference, Darwin, Northern Territory, Australia (oral presentation), 25-28 September, 2010.

Stevens, M.I. Biological signatures in Antarctica: A window into the past, to predict the future. Celebrating the International Polar Year: looking to the past to see the future. Public lecture supported by the Australian Academy of Science and International Polar Year. Royal Institution of Australia, Exchange Place, Adelaide 5000, 5 November, 2009.

Stevens, M.I. (2009) Biological signatures in Antarctica: A window into the past, to predict the future. RIA invited public lecture, Royal Institution of Australia, Exchange Place, Adelaide, 5 November, 2009.

Sutton, Peter (2009). Melbourne's outback. *Dialogue* 28 (2):74-77.

Sutton, Peter (2010). Lord Somers Camp 1932. *The Journal. Lord Somers Camp and Power House* 60(1):8-9 & 28.

Vaughan D. & **Chisholm L.A.** (2009). *Dendromonocotyle* in public aquaria. *International Symposium on Monogenea (ISM6)*, Cape Town, South Africa, August, 2009.

Whittington I.D. & Perkins L.M. (2009). Molecular data corrupts 'conventional' capsalid classification: inconceivable or credible and expected? The 6th International Symposium on Monogenea, Cape Town, South Africa. (Abstract with program; presentation C10), 2-7 August, 2009.

Whittington I.D. (2009). Dynamic nomenclature demands different procedures. The 6th International Symposium on Monogenea, Cape Town, South Africa. (Abstract with program; presentation C35). 2-7 August, 2009.

Williams R.E., Ernst I., Chambers C.B., **Whittington I.D.** & Deveney M.R. (2009). Treatments for monogeneans of yellowtail (*Seriola* spp.): status and the future. The 14th European Association of Fish Pathology International Conference, Prague, Czech Republic. (Abstract with program)., 14-19 September, 2009.

Xia, F., Brugger, J., Ngothai, Y, O'Neill, B., Chen, G. and Pring, A. (2009) Three Dimensional Ordered Arrays of Nanozeolites with Uniform Size and Orientation by a Pseudomorphic Coupled Dissolution-Reprecipitation Replacement Route. 8th World Congress of Chemical Engineering, Montréal, Canada, August, 2009.

Xia, F., Brugger, J. and Pring, A. (2009) Arsenian Pyrite Formation: Solid-State Diffusion or Dissolution-Reprecipitation Replacement ? Proceedings of the 10th Biennial SGA Meeting of The Society for Geology Applied to Mineral Deposits, Townsville, Australia. P. 700-702, August, 2009.

3.5 Staff contributions to State, National & International Initiatives

VALERIE BOLL:

August 2009: Caring for Country – Managing Indigenous and Scientific Environmental Knowledge in North East Arnhem Land, Australia (poster presentation). *SERI (Society for Ecological Restoration International) World Conference*, Perth, Western Australia.

28 April 2010: Caring for Country – Managing Indigenous and Scientific Environmental Knowledge in North East Arnhem Land, Australia. Presentation of the outcomes of the project to Dhimurru Aboriginal Corporation and their board. Yirrkala, Northern Territory.

JAN FORREST:

BUTTERFLY TALKS:

17 July 2009: Camelia Society, 20 people

28 July 2009: Iris Soc. Goodwood, 20 people

27 August 2009: Stirling Hills Garden Club, 15 people

1 September 2009: Kingston Park Probus club, 25 people

19 October 2009: Landcare group Callington, 20 people

21 October 2009: Longwood community group, 20 people

15 April 2010: Stirling Garden Club, 50 people

7 June 2010: Probus Holdfast Bay, 30 people

16 June 2010: ladies group, 10 people

21 June 2010: Mt. Barker Garden Club, 10 people

TOM GARA

10 November 2009: Gara, T. & Paul, M. 'On the pipe-track and in the town: Indigenous workers and Eyre Peninsula fringe camps'. Indigenous Participation in the Australian Economy Conference, National Museum of Australia, Canberra.

31 October 2009: Gara, T. The land of the Kaurna: Indigenous occupation of the Adelaide Plains prior to 1836. 25th Annual Friends of Parks Forum, Sunnybrae Farm.

PENELOPE GREENSLADE:

January 2010: Why use invertebrates to monitor catchment restoration success in western Victoria? CMA meeting, Coolac.

February, 2010: Life in your soil. Gunning Land Care Group.

February 2010: The importance of taxonomy in quarantine. Global Biosecurity Conference, Brisbane.

May 2010: Invasive Species. La Trobe University, Bendigo Campus.

MARK HUTCHINSON:

August 2009: SCIENCE ALIVE event, Wayville Showgrounds. Science on the Couch.

September 2009: UNIVERSITY OF SOUTH AUSTRALIA – Workshop contribution for MSc course on urban ecology and conservation, Reptiles of the Adelaide region.

October 2009: 7:30 REPORT story – Brown Snakes (Mike Sexton), interview filmed October 2009.

January 2010: Biodiversity Gallery information session for Primary School teachers,

March 2010: Toxinology Short Course for emergency medicine physicians, Womens' and Childrens' Hospital, Lecture on venomous snake origins and evolution; practical class on snake identification.

March 2010: Urrbrae TAFE, Practical class visit to SAM collections and talk on museum resources available for biodiversity studies.

May 2010: Biodiversity Gallery presentation, Australian Science Communicators.

May 2010: APY Lands Roadshow. Presenter.

June 2010: News report: 'LONGREACH LEADER' (Qld), "Reptile Research Team Treks Out West".

THIERRY LAPEROUSAZ

26-27 November 2009: South East road show talk: Deep sea research and "Show and tell" of deep sea specimens from SA Museum collections.

18- 19 August 2009: National Science Week presentation: Deep sea research and "Show and tell" of deep sea specimens from SA Museum collections.

CHRIS MADDEN:

February 2009: Aquatic Macroinvertebrates Taxonomic Workshop. Presented Identification Key to Genera of Australian Chironomidae Larvae

Field Naturalists Society of South Australia Meeting June 10, 2009. Presented talk "Macroinvertebrates in streams of Fleurieu Peninsula parks."

GRAHAM MEDLIN:

4 November 2009: 'Trees for Life' group at Willunga. Graham Medlin gave a PowerPoint presentation showing how Stick-nest Rat middens can be used to trace climatic change in the Flinders Ranges over the past 10,000 years.

11 November 2009: Field Naturalists Society of South Australia meeting. Graham Medlin gave a PowerPoint presentation on the formations found in Warraweena Cave in Warraweena Conservation Park in the northern Flinders Ranges.

12 May 2010: Field Naturalists Society of South Australia meeting. **Graham Medlin** and Peter Matejcic spoke on *Mammals and reptiles found during a biodiversity survey of Billiatt Wilderness Protection Area*.

SUZANNE MILLER:

24-26/7/09 Palaeowee school workshops: *Dinosaur Crime Scene*

14/7/09 Presentation at Adelaide Hills Resource Centre: *A Museum Most Marvelous*

1/7/09 Launch of Tartan Week: Presentation

23/7/09 Guest Speaker Fullarton Probis Club *A Museum Most Marvelous*

25/7/09 Guest speaker, Order of Australia Dinner

27/8/09 Adult Learners Week Award Dinner speech

10/7/09 – 12/7/09 Contributor three sessions of the Adelaide Festival of ideas

2/9/09 Guest Speaker, UniSA: *Science Communication & the role of museums*

3/7/09 TAFE SA David Unaipon Celebration Guest speaker

9/10/09 Speaker at Science in the Square *What you believe but can't prove*, RiAus

21/10/09 Chaired the Premiers Climate Change Council Emergency Management Symposium

26/10/09 Guest presenter, Barbara Hardy Dinner, University of Adelaide

28/10/09 Guest lecturer, University of the 3rd Age, Aldinga: *Museums in the 22nd Century*

14/11/09 Guest speaker University of Cambridge Society annual dinner: *A Museum Most Marvelous*

2/3/10 Chaired a session of the Adelaide Writers Week

4/3/10 Lecture to the Field Geology Club: *Geoarchaeology: unearthing ancient cultures from the Romans to Picts*

18/3/10 Guest Speaker, Medical Heritage Society: *Medical collections*

24/3/10 MC For Schools Palaeowee forum

6/4/10 Guest Speaker, Spirituality in the Pub

8/4/10 Guest Speaker, TRIN dinner

14/4/10 Guest Speaker, Quality in Postgraduate Teaching Conference 2010

28/5/10 Director's Tour for History Week: *Hidden Treasures*

Representative of the Australian Government on the OECD Global Science Forum SciColl Initiative

Chair of the Organising Panel for the 2010 Global Science Forum SciColl Workshop

Member of the National Research Infrastructure Council

Member of the Australian e-Research Infrastructure Council

Member of the National Cultural Heritage Committee

Deputy Chair of the Atlas of Living Australia Management Committee
Member of the Council of Australasian Museum Directors
Deputy Chair of the Premier's Climate Change Council, SA
Member of the South Australian Strategic Plan Audit Committee
Member of the Advisory Board to the Australian Centre for Evolutionary Biology,
University of Adelaide
Member of the Advisory Board to the Geospatial and Environmental Management
Discipline, UniSA

CHRIS NOBBS:

Attended the Museums Australia Education network conference in Melbourne 15-17 September.

Both Simon Langsford and Chris Nobbs attended the Museums Australia Education network in Canberra to formulate a response to the proposed new national curriculum for science and history. They also presented a workshop at the Interpreting Australia conference in Adelaide.

LESLEY SMALES:

October 2009: Two acanthocephalan stories from: a fish in South America; a marsupial in Australia. &th International Workshop on the Acanthocephala Darling Marine Center, University of Maine, USA.

GEORGE SMITH:

11 August 2009: "Dr William Delano Walker's personalized Christmas Cards". A power point presentation on for the Australian Society of Archivists Inc, SA Branch AGM, held in the Ira Redmont Rooms, The University of Adelaide.

24 May 2010: Anthropological Observations in Central and Northern Australia, an adaptation of a 1933 illustrated lecture by Dr WD Walker. History Week lecture.

DAVID STEMMER

11 May 2010: Bolivar Maceration Facility tour and workshop for students of Wildlife Ecology Class from University of South Australia, included a comprehensive tour through collection shed and main building followed by a workshop involving students in the preparation of museum specimens.

PETER SUTTON:

13 July 2009: Gave opening plenary address to International Pragmatics Association conference, University of Melbourne. Title: Giving away language.

28-30 August 2009: Was panellist in two sessions of *Exploring the 'New Normal'*, the 2009 Australian Leadership Retreat (Australian Davos Connection) at Hayman Island.

8 October 2009: Gave invited seminar titled 'Being under Doctor', at the Australasian Faculty of Public health Medicine (Royal Australian College of Physicians), Shenton Park (Perth), WA.

03 February 2010: Conducted all-day workshop for anthropology staff, Central Land Council, Alice Springs.

01 March 2010: Gave invited seminar on linguistic salvage field methods, Department of Linguistics, Boğaziçi University, Istanbul, Turkey.

08 March 2010: Took part in joint all-day seminar on Cape York Peninsula languages, Department of Linguistics, School of Oriental & African Studies, London,.

18 March 2010: Gave invited seminar, Department of Anthropology, University of Auckland, titled 'The reception of unsettling views'.

19 March 2010: Gave invited public lecture, University of Auckland, titled 'Some recent issues in Australian ethnic affairs'.

KERYN WALSH:

September 2009: Adelaide Gaol; the archaeology. Presentation to FOSSAM.

October 2009: Adelaide Gaol; history and archaeology. Presentation to History Society, SA.

October 2009: Walshe, K., Bourne, S., Reid, L., Prideaux, G., Arman, S. Koonalda Cave, Wall Markings. Poster presented at AURA Inter-Symposium.

November 2009: R. Candy and K. Walshe presented 'Osteology' as an intensive Masters Topic, Flinders University.

April 2010: Lecture, *Past Environments*, to Introduction to World Archaeology series, Flinders University.

FRAN ZILIO:

15 September 2009: ALIA Tour (Librarians), group/work shop and talk: family history.

16 November 2009: Northern Land Council visit, talk: family history.

25 November 2009: WA Community visit (Monty Hale Pilgangoora Community), workshop/talk: family history and archives.

24 February 2010: Roebourne Community visit, workshop/talk: family history and archives.

27 April 2010: Heather Brown University SA, Archival Management.

5 May 2010: Melissa Neumann O'Halloran Hill TAFE SA, archives talk and presentation of collections.

5 May 2010: Indigenous Youth Program, talk and tour: family history and archives.

24 May 2010: History Week, talk and behind the scenes tour.

24 May 2010: History Week, talk on Dr Walker by George Smith.

26 May 2010: Indigenous Knowledge Centre, consultation.

26 May 2010: Lama Lama Community visit, workshop/talk: family history and archives.

3 June 2010: Taunodi College visit, family history workshop, talk and tour.

15 June 2010: Berndt Museum visit, archive talk and tour.

19 May 2010: The Australian Society of Archivists on the history of access.

4. STAFF LIST

1 July 2009 to 30 June 2010

DIRECTORATE

DIRECTOR

S. Miller, BSc (Hons), PhD, FGS, F
Min Soc, FAIMM, FAGS

HEAD OF DEVELOPMENT

S. Riley, BA (Hons)
(retired March 2010)

HEAD, CORPORATE OPERATIONS

S. Clark, BSc. (Hons Psy), BSoc. Ad.,
M. Pol. Man (started April 2010)

BUSINESS MANAGER

P. Kidd, Adv Dip Bus Management

ADMINISTRATION OFFICER

N. Mladenovic

IT NETWORK & SYSTEMS MANAGER

P. Carter

HELPDESK OFFICER

R. Hames (left August 2009)
T. Cheng, As. Dip. Bus (Computer
Programming) (started October 2009)

OHS&W COORDINATOR

B. Collett

EXECUTIVE OFFICER

K. Ross, Dip Bus Marketing (started
September 2009)

EXECUTIVE ASSISTANT TO HEAD OF DEVELOPMENT

D. Veitch (left September 2010)

STORES/TRANSPORT OFFICERS

S. Perkins
M. Birch

VENUE FACILITIES COORDINATOR

A. Ferrari

PUBLIC PROGRAMS

HEAD OF PUBLIC PROGRAMS

M. Judd, BSc, Grad Dip T

PUBLIC PROGRAMS

COORDINATOR – EXECUTIVE

K. Ross, Dip Bus Marketing (left
September 2009)
E. Thomson, BSc (started November
2009)

MARKETING SECTION

MANAGER, MARKETING

C. Savage, BA (Hons), Grad Dip
Journalism

PUBLIC PROGRAMS

COORDINATOR – MARKETING

A. Hua, BA (Journalism), M
Marketing

A. Bonnin, B Int Studies & Media (left
November 2009)

COMMUNITY ENGAGEMENT SECTION

MANAGER, COMMUNITY ENGAGEMENT

L. Underwood, B T, B Edu
S. Morris, Dip T

PUBLIC PROGRAMS

COORDINATOR – COMMUNITY ENGAGEMENT

K. Tucker

INDIGENOUS SERVICES

INFORMATION OFFICERS

S. Agius
M. Clancy

SUPERVISOR, DISCOVERY CENTRE

M. Gemmell

**DISCOVERY CENTRE
INFORMATION OFFICER**

C. Burke (started December 2009, left
January 2010)

**SCHOOL HOLIDAY PROGRAM
ASSISTANTS**

S. Fraser (left February 2010)
R. Handrickan
V. Keetch
D. Averay
L. Niemz (left February 2010)
L. Barnes
S. Rampal Thomas (started August
2009)
T. Finch (started September 2009)
A. Tate
P. Day (started March 2010)

**SPECIAL EXHIBITIONS
SECTION**

**MANAGER, TEMPORARY AND
TRAVELLING EXHIBITIONS**
T. Gilchrist, BA, Grad Dip Comm
(PR)

**PUBLIC PROGRAMS
COORDINATOR – EXHIBITIONS**
A. Guy

EDUCATION SECTION

EDUCATION OFFICERS
S. Langsford, BSc, Grad Dip T, Grad
Dip Ed Admin
C. Nobbs, Adv Dip T

**INDIGENOUS LANGUAGE AND
CULTURE SPECIALISTS**
T. Minitong-Kemelfield (started June
2010)
E. Amamoo (started June 2010)

EDUCATION SUPPORT OFFICER
C. Pietrantonio (nee Ferreira)

**DEVELOPMENT & DESIGN
SECTION**

**MANAGER, DEVELOPMENT &
DESIGN**
D. Kerr, B Ed (Hons), BA

SENIOR EXHIBITION OFFICER
I.R. Maidment, BA, Dip T (Art)

MUSEUM SERVICES OFFICER
G. Parnell

SUPERVISOR 3D DESIGN
J. Bain

EXHIBITIONS ASSISTANTS
B. Blesing, BA Vis Arts (left February
2010)
R. Hartman-Kearns, BA Vis Arts
(Hons) (left February 2010)
B. Minuzzo, BA Vis Arts (left
February 2010)
R. Moore, Ad Dip Applied & Vis Arts
(left February 2010)
K. Aird, Dip T (left March 2010)
T. Whittle (left December 2009)
M. O'Hara (left December 2009)
K. Kenny (left February 2010)
M. Lillywhite, BA Vis Arts (left
November 2009)
M. Moore (started August 2009, left
December 2009)
T. Everuss (started July 2009, left
February 2010)

MULTIMEDIA SECTION

MANAGER, MULTIMEDIA
T. Peters, BA Fine Art

SCIENCE

HEAD OF SCIENCE

R. Hill, BSc (Hons), PhD, D Sc, FAI
Biol, FLS

MANAGER OF SCIENCE

P. Clarke, BSc, BA, PhD

PERSONAL ASSISTANT TO HEAD OF SCIENCE & MANAGER OF SCIENCES

L. Strefford

HEAD OF COLLECTIONS

R. Morris, BA (Hons), M Soc Sci

DEPUTY HEAD OF COLLECTIONS

K. Walshe, PhD

ADMIN. COORDINATORS

D. Churches (part-time)

INFORMATION MANAGEMENT SECTION

INFORMATION MANAGEMENT MANAGER

F. Zilio, B A, MIMS

LIBRARY SERVICES OFFICER

J. Evans

ARCHIVES COLLECTION MANAGER

L. Gardam (Maternity leave start: 2
September 2009)

H. Hopper (Start: 19 October 2009)

FAMILY HISTORY ACCESS OFFICER

A. Abdullah-Highfold

ARA IRITJA PROJECT

J. Dallwitz

D. Dallwitz

ANTHROPOLOGY SECTION

HEAD OF ANTHROPOLOGY

P. Clarke, BSc, BA, PhD

SENIOR RESEARCHER

AUSTRALIAN ETHNOLOGY

P. Jones, LLB, BA (Hons), PhD

ANTHROPOLOGY CASUAL POOL

R. Candy (Start: 1 July 2009; Finish 31
October 2009)

S. Graham (Start: 1 July 2009; Finish
31 October 2009)

T. Webb (Start: 13 May 2009; Finish
27 November 2009)

ABORIGINAL COLLECTIONS

SENIOR RESEARCHER FOREIGN ETHNOLOGY

B. Craig, BA (Hons), Dip Ed, M A
(Hons), PhD

SENIOR COLLECTION MANAGER ABORIGINAL COLLECTIONS & ARCHAEOLOGY

K. Walshe, PhD

COLLECTION MANAGER, ABORIGINAL ARCHAEOLOGY

G. Toone

COLLECTION MANAGER FOREIGN ETHNOLOGY

A. Rose, BA, Grad Dip Mus St, M A

ASSISTANT COLLECTION MANAGER ANTHROPOLOGY

T. Dodd

COLLECTION MANAGER HISTORY OF SCIENCE & POLAR COLLECTIONS

M. Pharaoh

EARTH SCIENCES SECTION

HEAD OF EARTH SCIENCES

A. Pring, BSc (Hons), PhD, FMSA, F
Min Soc

SENIOR RESEARCHER

J. Brugger, BSc (Hons), PhD
M. Lee, BSc (Hons), PhD
J. Gehling, Ph D, MSc, BSc (Hons)

SENIOR COLLECTION MANAGER

B. McHenry, BSc (Hons), M Sc

COLLECTION MANAGER

J. McNamara, BSc (Hons)
(Finished: 30 September 2009)
M. Binnie (Start: 22 February 2010)

ASSISTANT COLLECTION MANAGER

D. Rice (part-time) (left: December
2010)

RESEARCH

ASSISTANTS/SCIENTISTS

J. Bei (start: 15 July 2009; finish 31
January 2010)
C. Ciobanu (start: 11 January 2010)
A. McFadden (start: 12 October 2009)
B. Tooth (start: 3 March 2010)
F. Williams (start 14 January 2010)

BIOLOGICAL SCIENCES SECTION

HEAD OF BIOLOGICAL SCIENCES

S. Cooper, BSc (Hons), PhD

ENTOMOLOGY

RESEARCHER TERRESTRIAL INVERTEBRATES

Mark Stevens, PhD

SENIOR COLLECTION MANAGER TERRESTRIAL INVERTEBRATES

J. Forrest, OAM, Assoc Dip
Photography (Retired: 26 February
2010)

COLLECTION MANAGER

TERRESTRIAL INVERTEBRATES

P. Hudson, PhD (Flinders)

ASSISTANT COLLECTION

MANAGER ENTOMOLOGY

C. Lee (Part-time)

DATABASING PROJECT

J. Wood
J. Moore
I. Van Steepen (Finished: 31 May
2009)

ARACHNOLOGY

COLLECTION MANAGER

ARACHNOLOGY

D. Hirst.

PARASITOLOGY

PRINCIPAL RESEARCHER

PARASITOLOGY

I. Whittington, BSc (Hons), PhD

COLLECTION MANAGER

PARASITOLOGY

L. Chisholm, BSc, M Sc, PhD

MARINE INVERTEBRATES

COLLECTION MANAGER MARINE INVERTEBRATES

T. Laperousaz, BSc (Hons)

COLLECTION MANAGER MARINE INVERTEBRATES

R. Hamilton Bruce, AIAT, ABPI, Dip
Graph Design

ASSISTANT COLLECTION

MANAGER MARINE

INVERTEBRATES

C. Lee (Part-time)

HERPETOLOGY

SENIOR RESEARCHER
HERPETOLOGY

M. Hutchinson, BSc (Hons), PhD

COLLECTION MANAGER
HERPETOLOGY

C. Kovach

ICHTHYOLOGY

COLLECTION MANAGER
ICHTHYOLOGY

R. Foster (part time)

MAMMALOLOGY

SENIOR RESEARCHER
MAMMALOLOGY

C. Kemper, BSc, PhD

COLLECTION MANAGER
MAMMALOLOGY

D. Stemmer, BSc (part time)

RESEARCH ASSISTANT
MAMMALOLOGY

M. McDowell, BSc (Hons), M Sc
(Finished: 1 March 2009)

TECHNICAL OFFICER

T. Reardon, Cert Sc Tech

BOLIVAR CASUAL POOL

J. Adams (Start: 27 July 2009; Finish
30 June 2010)

B. Mazey (Start: 1 July 2009; Finish
31 December 2009)

T. Segawa (Start: 22 February 2010)

ORNITHOLOGY

SENIOR COLLECTION MANAGER
ORNITHOLOGY

P. Horton, BSc (Hons), PhD

COLLECTION MANAGER
ORNITHOLOGY

M. Penck, BSc (Hons)

ASSISTANT COLLECTION
MANAGER ORNITHOLOGY

D. Churches (part time)

EVOLUTIONARY BIOLOGY

HEAD OF EBU/PRINCIPAL
RESEARCHER EVOLUTIONARY
BIOLOGY

S. Donnellan, BSc (Hons), PhD

SENIOR RESEARCHER
EVOLUTIONARY BIOLOGY

M. Adams, BSc (Hons)

S. Cooper, BSc (Hons), PhD

RESEARCHER EVOLUTIONARY
BIOLOGY

L. Wheaton (Start: 20 July 2009)

R. King (Start: 5 January 2009)

PRINCIPAL TECHNICAL
OFFICERS

T. Bertozzi, BSc (Hons), PhD

K. Saint

TECHNICAL OFFICERS

T. Reardon, Cert Sc Tech

R. Foster (part-time)

EBU CASUAL POOL

T. Bradford (Start: 11 December 2009)

A. Craigie (Start: 5 May 2010)

A. Fitch (Start: 27 April 2010)

J. Guzinski (Start: 1 April 2010)

T. Hague (Start: 12 February 2010;
Finish: 15 June 2010)

A. Hugall (Start: 1 July 2009; Finish:
30 September 2010)

S. Nicolson (Start: 18 December 2009)

E. Perkins (Start: 5 January 2010;
Finish: 28 February 2010)

HONORARY RESEARCH ASSOCIATES

K. Akerman (Anthropology)
 A. Austin, BSc, PhD (Biological Sciences)
 S. Barker, PhD (Biological Sciences)
 D. Barton, PhD (Biological Sciences)
 I. Beveridge, BSc, PhD (Biological Sciences)
 A. Black, PhD (Biological Sciences)
 V. Boll, PhD (Anthropology)
 S. Burnell, BSc (Biological Sciences)
 A. Cooper, PhD (Biological Sciences)
 D. Corbett, PhD (Earth Sciences)
 C. Daniels, BSc, PhD (Earth Sciences)
 J. Forrest, OA (Biological Sciences)
 T. Gara (Information Services)
 L. Gershwin, BSc, PhD (Biological Sciences)
 P. Greenslade (Biological Sciences)
 M. Halt, BSc (Hons) (Biological Sciences)
 M. Hammer, BSc (Hons), PhD (Biological Sciences)
 J. Jago, BSc (Hons), PhD, F Aus IMM (Earth Sciences)
 R. Jenkins, BSc (Hons), PhD (Earth Sciences)
 G. R. Johnston (Biological Sciences)
 B. Kear, PhD (Earth Sciences)
 P. Kolesik, PhD (Biological Sciences)
 P. Kruze, BSc, PhD (Earth Sciences)
 R. J. Lavigne, PhD (Biological Sciences)
 A. J. McArthur, OAM, BE (Biological Sciences)
 C. Madden, BSc, M Env St (Biological Sciences)
 E. Matthews, BA, PhD (Biological Sciences)
 G. Medlin, BSc, Dip T (Biological Sciences)
 M. O'Donoghue, B Ed, Grad Dip Rel Ed, M Ed (Foreign Ethnology)
 N. Pledge, BSc (Hons), M Sc (Earth Sciences)
 G. Prideaux, BSc (Hons), PhD (Earth Sciences)
 L. Reed, BA (Hons), PhD (Earth Sciences)
 D. Rice (Earth Sciences)

S. Richards (Biological Sciences)
 G. Rouse, PhD (Biological Sciences)
 T. Schultze-Westrum, PhD (Foreign Ethnology)
 P. Shaughnessy, BSc (Hons), M Sc, PhD (Biological Sciences)
 S. Shepherd, BA, LIB, M Env St, PhD (Biological Sciences)
 G. Smith (Information Services)
 M. Snow, BSc, PhD (Earth Sciences)
 I. Tomo (Biological Sciences)
 M. Tyler, AO, MSc (Biological Sciences)
 L. Warner, BSc (Biological Sciences)
 C. Watts, BSc (Hons), PhD (Biological Sciences)
 Prof R Wells, BSc (Hons), PhD (Earth Sciences)
 W. Zeidler, BSc (Hons), MSc, PhD (Biological Sciences)

5. HUMAN RESOURCES

EMPLOYEE NUMBERS, GENDER AND STATUS

Total Number of Employees		
Persons	82	
FTEs	74	(FTEs shown to 1 decimal place)

Gender	% Persons	% FTEs
Male	51.22	55.57
Female	48.78	44.43

Number of Persons During the 2009-10 Financial Year	
Separated from the agency	37
Recruited to the agency	28

Number of Persons at 30 June 2010	
On Leave without Pay	3

NUMBER OF EMPLOYEES BY SALARY BRACKET

Salary Bracket	Male	Female	Total
\$0 - \$49 199	6	12	18
\$49 200 - \$62 499	13	16	29
\$62 500 - \$80 099	11	9	20
\$80 100 - \$100 999	9	1	10
\$100 100+	3	2	5
TOTAL	42	40	82

STATUS OF EMPLOYEES IN CURRENT POSITION

FTEs	Ongoing	Short-Term Contract	Long-Term Contract	Other (Casual)	Total
Male	37.4	1	1	1.46	40.86
Female	20	4.4	5	3.27	32.67
TOTAL	57.4	5.4	6	4.73	73.53
PERSONS	Ongoing	Short-Term Contract	Long-Term Contract	Other (Casual)*	Total
Male	38	1	1	2	42
Female	23	5	5	7	40
TOTAL	61	6	6	9	82

EXECUTIVES

Number of executives by gender, classification and status in current position

	Ongoing		Tenured Contract		Untenured Contract		Other (Casual)		Total	
Classification	Male	Female	Male	Female	Male	Female	Male	Female	Male	Female
SAES1						1				1
Total	0	0	0	0	0	1	0	0	0	1

LEAVE MANAGEMENT

Average days leave taken per full time equivalent employee

<i>Leave Type</i>	2006-07	2007-08	2008-09	2009-10
Sick Leave	5.42	4.59	5.4	5.87
Family Carer's Leave	0.45	0.78	1	0.69
Special Leave with Pay	0.73	0.36	0.9	0.98

Note: Provision of the information reported in the following three tables is voluntary, therefore the figures provided may not fully reflect the diversity of our workforce.

ABORIGINAL AND/OR TORRES STRAIT ISLANDER EMPLOYEES

Salary Bracket	Aboriginal and/or Torres Strait Islander Employees	Total Employees	% Aboriginal and/or Torres Strait Islander Employees	Target*
\$0 - \$49 199	0	18	0	
\$49 200 - \$62 499	3	29	10.34	
\$62 500 - \$80 099	0	20	0	
\$80 100 - \$100 999	0	10	0	
\$100 100+	0	5	0	
TOTAL	3	82	3.65 %	2%

* Target from South Australia's Strategic Plan

WORKFORCE DIVERSITY

Age Profile

Age Bracket	Male	Female	Total	% of Total	2010 Workforce Benchmark*
15-19	0	0	0	0	6.1
20-24	1	2	3	3.66	10.6
25-29	3	6	9	10.98	10.5
30-34	2	4	6	7.32	9.4
35-39	2	2	4	4.88	11.2
40-44	6	7	13	15.85	11.1
45-49	5	4	9	10.98	12.2
50-54	5	6	11	13.41	11
55-59	11	7	18	21.95	9.2
60-64	6	2	8	9.79	6.0
65+	1	0	1	1.22	2.9
TOTAL	42	40	82	100	100

*Source: Australian Bureau of Statistics, Australian Demographic Statistics, 6291.0.55.001 Labour Force Status (ST LM8) by sex, age, state, marital status – employed – total from Feb78 Supertable, South Australia at May 2010.

CULTURAL AND LINGUISTIC DIVERSITY

	Male	Female	Total	% Agency	SA Community*
Number of employees born overseas	9	8	17	20.73%	20.3%
Number of employees who speak language(s) other than English at home	1	2	3	3%	16.6%

*Benchmarks from ABS Publication Basic Community Profile (SA) Cat No. 2001.0, 2006 census.

NUMBER OF EMPLOYEES WITH ONGOING DISABILITIES REQUIRING WORKPLACE ADAPTATION

(According to Commonwealth DDA definition)

Male	Female	Total	% of Agency
1	0	1	1.2

NUMBER OF EMPLOYEES WITH DISABILITIES REQUIRING WORKPLACE ADAPTATION

Disability	Male	Female	Total	% of Agency
Disability Requiring Workplace Adaption	1	0	1	1.2
Physical	0	0	0	0
Intellectual	0	0	0	0
Sensory	0	0	0	0
Psychological/ Psychiatric	0	0	0	0

VOLUNTARY FLEXIBLE WORKING ARRANGEMENTS

Number Of Employees Using Voluntary Flexible Working Arrangements By Gender

	Male	Female	Total
Purchased Leave	0	0	0
Flexitime	31	25	56
Compressed Weeks	2	0	2
Part-time	0	3	3
Job Share	0	3	3
Working from Home	3	0	3

PERFORMANCE MANAGEMENT

Documented Review Of Individual Performance

Employees with ...	% Total Workforce
A review within the past 12 months	1.22
A review older than 12 months	65.85
No review	32.93

TRAINING EXPENDITURE

As a percentage of total remuneration expenditure

Training and Development	Total Cost	% of Total Salary Expenditure
Total training and development expenditure	\$6874.00	1.4
Total leadership and management development expenditure	\$0.00	0

6. OCCUPATIONAL HEALTH, SAFETY AND INJURY MANAGEMENT (OHS&IM)

Key achievements

The museum is continually working towards developing a safe environment for staff and visitors alike. A positive culture with an emphasis on safety exists throughout all areas of the museum's operations. Key achievements during the reporting period 2009-10 are as follows:

- Training programs for employees, volunteers, students and honoraries including refresher induction, first aid, four wheel drive, manual handling, responsible officer, volunteer guides and internal auditor training were conducted.
- Remote area and field trip operations were reviewed. Documentation was reviewed to reflect changes to the requirements for remote area and field trip operations. Communications equipment including satellite phones and Personal Locator Beacons were purchased to support these operations.
- Incident reporting increased, including near miss reporting, a lead indicator of a progressively positive reporting culture.
- Four employees volunteered as Health and Safety Representatives bringing the total to five an increase of 400%.
- Working with children and young people policy was created; strategies to support the policy included the requirement for personnel working with children and young people to obtain a National Police Certificate.

OCCUPATIONAL HEALTH, SAFETY AND WELFARE AND INJURY MANAGEMENT REPORT.

The South Australian Museum performance against the elements of the Safety In the Public Sector 2007-2010 is tabled below:

1. SUSTAINABLE COMMITMENT				
Strategy	Action	Performance indicator	Responsibility	Status
1.1 Strategies to promote zero harm vision	OHS&W awareness training for all new employees	100% of new employees received induction.	Managers	100% have received training
1.1 Strategies to promote zero harm vision	OHS&W Induction for volunteer guides and hosts	Volunteer guides and hosts receive induction and training	Community Engagement managers	Volunteer guides and hosts received training.
1.2 Implementation of DPC OHS&W&IM system	DPC OHSW & IM training	New employee's complete DPC on line induction	Managers	New employees completed DPC on line induction
1.3 OHS&W awareness	Inclusion of OHS&W in meetings agendas	80% of meetings to include OHS&W	Managers	90% of meetings include OHS&W
2. FINANCIAL ACCOUNTABILITY				
2.1 OHS&W training needs identified	Training needs analysed	Training programs planned Training needs analysis conducted	OHS&W Coordinator	Ongoing, training needs analysis conducted
2.2 Identify purchases required as corrective actions	Purchase of required equipment/tools/items on a priority basis	Required equipment/tools/items purchased	Business Manager OHS&W Coordinator	Ongoing
3. INTEGRATED RISK MANAGEMENT				
3.1 Adopt hazard management principals to control risk	Maintain records and identify controls to be implemented to minimise risk	Controls are implemented to minimise risk.	Executive OHS&W Committee OHS&W Coordinator	Risks are managed. SAM risk register established for longer term risks.

4. RIGOROUS EVALUATION				
4.1 Work place inspections	Work place inspections are programmed by DPC Workplace Safety and Well Being unit.	100% of programmed work place inspections occur	OHS&W Coordinator	Ongoing, 100% of scheduled inspections have been conducted
4.2 Review internal policies and procedures	Maintain document register.	Internal policies and procedures reviewed	Executive OHS&W Committee OHS&W Coordinator	Policies and procedures have been reviewed
4.3 Create internal policies and procedures.	Identify internal policies and procedures required by SAM	Internal policies and procedures required by SAM have been created	Executive OHS&W Committee OHS&W Coordinator	Internal policies, procedures and forms have been created in consultation with stakeholders
4.4 Internal audits conducted	Internal audits program is established by DPC Workplace Safety and Well Being Unit	100% of programmed audits are conducted	OHS&W Coordinator	Ongoing, 100% of scheduled audits have been conducted

Table 1 OHS Notices and Corrective Actions taken

Number of notifiable occurrences pursuant to OHS&W Regulations Division 6.6	0
Number of notifiable injuries pursuant to OHS&W Regulations Division 6.6	0
Number of notices served pursuant to OHS&W Act s35, s39 and s40 (default, improvement and prohibition notices)	0

Table 2 Reported Incidents

Mechanism of incident	0
Falls, slips and trips	9
Hits	4
Hit by stationary object	2
Hit by moving object	1
Chemicals	2
Burn	1
Hit by falling object	1
Cuts	5
Vehicle	1

Table 3: Agency gross workers compensation expenditure for 2009-10 compared with 2008-09

EXPENDITURE	2009-10 (\$)	2008-09 (\$)	Variation (\$ +)	%Change (\$-)
Income maintenance	0	0	0	0
Lump Sum Settlements Redemptions – Sect.42	0	0	0	0
Lump Sum Settlements Permanent Disability – Sect.43	0	0	0	0
Medical/Hospital Costs combined	738.45	0	738.45	738%
Other	0	0	0	0
Total Claims Expenditure	\$738.45	0	\$738.45	738%

Successful consultative arrangements within the South Australian Museum include:

INTERNAL STAKEHOLDERS	CORPORATE STAKEHOLDERS	EXTERNAL STAKEHOLDERS
Employees	ArtsSA	Adelaide University
Health and Safety Committee	DPC; DPCCC	Spotless Maintenance Contractors
Health and Safety Representative	DPC; Workplace Safety and Well Being Unit	ISS Cleaning Contractors
Volunteers and Students	Zero Waste	Wilson Security
Executive Management	SafeWork SA	SA Metropolitan Fire Service
		Registered Training Organisations

Disability Action Plan

The Museum continues to work with Arts SA on monitoring its visitor services for disability access.

The Museum receives regular visitors to its galleries from people with a range of disabilities and special needs. Museum staff also respond to specific requests for specially designed group tours and experiences.

All exhibition and gallery development takes into account consideration of access and egress and disabled parking is available at the rear of the Museum for cars and vans.

Equal Employment Opportunity Programs

As an EEO employer, the South Australian Museum is committed to employing on merit regardless of race, gender, sexuality, marital status, age, pregnancy or disability for all positions within the organisation. This is supported by the Museum's diverse workforce profile.

Overseas Travel 2009-10

Number of Employees	Destination/s	Reason for Travel	Total Cost to Agency
1	BELGIUM	Director represented the Australian Federal Government as a delegate at the Global Science Forum.	\$0.00
1	UK	Fullfilling ARC Linkage Grant obligation LX0882558. Visiting Butlin's laboratory, University of Sheffield, UK.	\$3 346.00 (Salary)
1	MACQUARIE ISLAND	Invertebrate biodiversity survey of sub-Antarctic, Macquarie Island	\$10 804.00 (Salary)
1	ANTARTICA	Undertake role as PI on the 3 rd year fieldwork for an international polar year project IPY "Understanding, valuing and protecting Antarctica's unique terrestrial ecosystems: predicting biocomplexity in dry valley ecosystems.	\$0.00
1	NAMBIA	Invited to join a group of educators and science communication practitioners to accompany the South Africa and American research scientists for a 10 day field expedition to the Gobabeb Desert Research Station in Namibia.	\$0.00
1	SOUTH AFRICA	To attend the 6 th International symposium on Monogenea in cape town South Africa	\$2 400.00 (Salary)
1	PARIS/ PRAGUE	Keynote speaker at SEPM conference, studying Cambrian fossil collections in the museum National D'Histoire naturelle, Paris, attending official conference of chairs of subcommission working on defining boundaries in the geological time scale, Prague	\$5 250.00 (Salary)
1	UK	Research and documentation trip as part of the data gathering phase for the ARC Project: "Reconstructing the Spencer and Gillen collection"	\$0.00
			\$21 800.00

ASBESTOS REPORT

Priority and Removal Activities

Category	Number of Sites		Category Description	Interpretation One or more items at these sites ...
	At start of year	At end of year		
1			Remove	should be removed promptly.
2	14	14	Remove as soon as practicable	should be scheduled for removal at a practicable time.
3	15	9	Use care during maintenance	may need removal during maintenance works.
4	23	8	Monitor condition	has asbestos present. Inspect according to legislation and policy.
5			No asbestos identified / identified asbestos has been removed	(All asbestos identified as per OHS&W 4.2.10(1) has been removed)
6			Further information required	(These sites not yet categorised)

Definitions

Category: The site performance score, determined by the lowest item performance score at each site.

Number of Sites in Category: A count of how many sites have the corresponding site performance score, with separate counts done at the start and the end of each year.

Category Description: Indicates the recommended action corresponding to the lowest item performance score (recorded in the asbestos register by a competent person, as per OHS & W Regulations (SA) 1995, 4.2.10).

Interpretation: The Asbestos register was updated on 9/6/2009 following inspections conducted by DTEI Asbestos Services.

Level 2 of the museum had all asbestos removed by licensed contractors as a part of the Biodiversity Gallery building project.

Netley building 4 had asbestos material removed from the roof and claddings.

The large number of sites relates to the amount of integral asbestos material that is part of the infrastructure of buildings and fittings and is considered low risk when left undisturbed.

Account Payment Statistics

Particulars	Number of accounts paid	Percentage of accounts paid (by number)	Value in \$A of accounts paid	Percentage of accounts paid (by value)
Paid by due date*	2 800	84.9%	\$6 760 715.82	93.0%
Paid late, within 30 days of due date	421	12.8%	\$536 449.22	5.7%
Paid more than 30 days from due date	77	2.3%	\$119 008.33	1.3%

Fraud And Legislative Compliance

No frauds or suspected frauds have occurred to the knowledge of the management of the South Australian Museum. The Museum has maintained a comprehensive system of checks and balances to control and prevent fraud, under the advice of the Auditor General's Department. Full disclosure has been made to the auditors regarding all non compliance obligations with laws and regulations that should be considered in preparing the Museums financial report.

CONSULTANTS – 2009-10

Value	No	Name	Description	Total Expenditure
Below \$10,000	1	Grieve Gillett Pty Ltd	Design concepts for a proposed Information Centre at SA Museum	\$5 535.00
\$10,000 - \$50,000	1	Ian Baird	Digitising and data entry for the Ara Irititja archive	\$15 285.00
	2	Graham Nudding	Data entry, scanning and filing for Ara Iritja digital archive	\$13 910.00
Above \$50,000	0			\$0.00
			Total	\$34 730.00

7. FREEDOM OF INFORMATION ACT, 1991 PART 11 SECTION 9(2)

INFORMATION STATEMENT

Agency Structure and Functions: Section 9(2)(A)

The following information is contained in this Annual Report and is deemed to be consistent with the requirements of the Freedom of Information Act 1991:

- Statement of role and objectives
- Legislation responsibilities
- Resources employed

Agency performance is monitored regularly. Each year specific targets and objectives are formulated and major achievements, improvements and initiatives reported.

Effect of Agency's Functions on Members of the Public: Section 9(2)(B)

The Museum has a direct effect on the general public in two quite different ways. First as an institution whose display galleries are open for public education and enjoyment and second through the scientific divisions whose research and information are available to other Government departments as well as the public.

The impact and involvement of each division of the museum in this process can be obtained from the achievements and initiatives section of this Annual Report.

Arrangements for Public Participation in Policy Formation: Section 9(2)(C)

The Board of eight members is appointed by the Minister for the Arts. These appointments are from the general public and provide an avenue for public participation in policy formulation.

For any major development, such as the development of displays relating to living cultures, advisory committees are established for the period of the project to ensure that there is full and proper provision for public participation.

In addition, the museum maintains regular contact with Aboriginal community groups through the Board appointed Aboriginal Advisory Group which deals specifically with on matters relating to custodianship and access to collections.

Description of Kinds of Documents held by the Agency: Section 9(2)(D)

The Museum classifies all documents into the following categories:

Board Minutes

The minutes of the SA Museum Board meetings are numbered and inserted in a board minute book. Board papers are also numbered and filed in hard cover folders. The papers contain all documents and correspondence relating to the board meeting. Current minute books and papers are kept in the Director's Office. Older minute books and papers, dating back to 1940, are stored in the Museum Archives section. Board papers and Minutes up to 1940 are permanently stored in State Records.

Dockets

The museum continues to administer the formal document recording/registration and archiving via its docket database system. Each relevant department's administration sections coordinate the process of document management. Dockets hold all documents concerned with the day to day management of the museum and are classified as follows – collection management; development and design; education; governance – museum board; indigenous services; information management; public programs; research; sponsorship; and volunteers.

Policy Statements

The Board has published several Policy Statements, which are available for use by the general public. These include: 'Professional and Commercial Services', 'Statement on Secret/Sacred Collection', 'Collections Policy (2005-2009)', 'Policy on Human Skeletal Remains Collection', 'Exhibition Policy', 'Publications Policy', 'Honorary Appointments', 'Guidelines for the Acquisition, Operation and Management of Computers in the Museum', 'Access to Personal Information – policy and procedures', 'Procedures for Records Management' and 'Copyright Policy and Procedures', 'Museum Budget Policy' and 'South Australian Museum Board Investment Policy'.

Access Arrangements, Procedures and Points of Contact: Section 9(2)(E)(F)

To gain access to museum documents, other than those identified above as available, it is necessary to apply in writing under the Freedom of Information Act to:

Contact Officer, Freedom of Information

C/- The Director

South Australian Museum

North Terrace, Adelaide 5000

Freedom of Information

One enquiry under the Freedom of Information Act was received in 2009-10.

Whistleblowers Protection Act 1993

As an entity of the South Australian Government, the South Australian Museum is committed to support and encourages staff to demonstrate integrity and conduct ethical professionalism as part of the public sector. Reporting as defined by part of the Whistleblowers Protection Act is encouraged should it be necessary. For the 2009-10 reporting period there were no occasions where public interest information has been disclosed to the responsible officer.

INDEPENDENT AUDIT REPORT

INDEPENDENT AUDITOR'S REPORT



Government of South Australia

Auditor-General's Department

9th Floor
State Administration Centre
200 Victoria Square
Adelaide SA 5000
DX 56208
Victoria Square
Tel +618 8226 9640
Fax +618 8226 9688
ABN 53 327 061 410
audgensa@audit.sa.gov.au
www.audit.sa.gov.au

**To the Chairman
Museum Board**

As required by section 31 of the *Public Finance and Audit Act 1987* and section 16 (2) of the *South Australian Museum Act 1976*, I have audited the accompanying financial statements of the Museum Board for the financial year ended 30 June 2010. The financial statements comprise:

- A Statement of Comprehensive Income
- A Statement of Financial Position
- A Statement of Changes in Equity
- A Statement of Cash Flows
- Notes to the Financial Statements
- A Certificate from the Chairman, Museum Board and the Director, South Australian Museum.

The responsibility of the members of the Museum Board for the financial statements

The members of the Museum Board are responsible for the preparation and the fair presentation of the financial statements in accordance with the Treasurer's Instructions promulgated under the provisions of the *Public Finance and Audit Act 1987* and the *South Australian Museum Act 1976* and Australian Accounting Standards. This responsibility includes establishing and maintaining internal controls relevant to the preparation and fair presentation of the financial statements that are free from material misstatement, whether due to fraud or error; selecting and applying appropriate accounting policies; and making accounting estimates that are reasonable in the circumstances.

Auditor's responsibility

My responsibility is to express an opinion on the financial statements based on the audit. The audit was conducted in accordance with the requirements of the *Public Finance and Audit Act 1987* and Australian Auditing Standards. The Auditing Standards require that the auditor complies with relevant ethical requirements relating to audit engagements and plans and performs the audit to obtain reasonable assurance whether the financial statements are free from material misstatement.

An audit involves performing procedures to obtain audit evidence about the amounts and disclosures in the financial statements. The procedures selected depend on the auditor's judgement, including the assessment of the risks of material misstatement of the financial statements, whether due to fraud or error. In making those risk assessments, the auditor considers internal control relevant to the entity's preparation and fair presentation of the financial statements in order to design audit procedures that are appropriate in the circumstances. An audit also includes evaluating the appropriateness of the accounting policies used and the reasonableness of accounting estimates made by the members of the Museum Board, as well as the overall presentation of the financial statements.

I believe that the audit evidence I have obtained is sufficient and appropriate to provide a basis for my auditor's opinion.

Auditor's opinion

In my opinion, the financial statements present fairly, in all material respects, the financial position of the Museum Board as at 30 June 2010, its financial performance and its cash flows for the year then ended in accordance with the Treasurer's Instructions promulgated under the provisions of the *Public Finance and Audit Act 1987* and Australian Accounting Standards.



S O'Neill
AUDITOR-GENERAL
28 September 2010

Museum Board

STATEMENT OF COMPREHENSIVE INCOME

For the year ended 30 June 2010

	Note	2010 \$'000	2009 \$'000
Expenses			
Staff benefits	4	6,374	5,807
Supplies and services	6	3,579	3,371
Accommodation and facilities	7	2,484	2,271
Depreciation and amortisation	8	1,604	1,371
Grants		90	147
Net loss from the disposal of non-current assets	13	18	-
Total expenses		14,149	12,967
Income			
Grants	9	541	700
Sale of goods		37	11
Fees and charges	10	483	723
Donations and bequests		1,084	239
Donations of heritage assets		235	256
Sponsorships	11	422	403
Interest and investment	12	178	174
Resources received free of charge	14	427	462
Recoveries		394	546
Other	15	183	188
Total income		3,984	3,702
Net cost of providing services		10,165	9,265
Revenues from SA Government			
Recurrent operating grant		8,867	8,373
Capital grant		435	2,662
Total revenues from SA Government		9,302	11,035
Net result		(863)	1,770
Total comprehensive result		(863)	1,770

The net result and comprehensive result are attributable to the SA Government as owner

The above statement should be read in conjunction with the accompanying notes

Museum Board

STATEMENT OF FINANCIAL POSITION

As at 30 June 2010

	Note	2010 \$'000	2009 \$'000
Current assets			
Cash	23	844	4,677
Receivables	16	524	533
Total current assets		1,368	5,210
Non-current assets			
Property, plant and equipment	17	37,721	36,653
Heritage collections	18	145,246	144,981
Investments	19	1,366	-
Total non-current assets		184,333	181,634
Total assets		185,701	186,844
Current liabilities			
Payables	20	347	784
Staff benefits	21	899	790
Provisions	22	37	36
Total current liabilities		1,283	1,610
Non-current liabilities			
Payables	20	111	108
Staff benefits	21	1,115	1,089
Provisions	22	121	103
Total non-current liabilities		1,347	1,300
Total liabilities		2,630	2,910
Net assets		183,071	183,934
Equity			
Asset revaluation surplus		48,566	48,566
Retained earnings		134,505	135,368
Total equity		183,071	183,934

The total equity is attributable to the SA Government as owner

Unrecognised contractual commitments

24

Contingent assets and liabilities

25

The above statement should be read in conjunction with the accompanying notes

Don

Museum Board

Statement of Changes in Equity

For the year ended 30 June 2010

	Note	Asset revaluation surplus \$'000	Retained earnings \$'000	Total \$'000
Balance at 30 June 2008		48,566	133,378	181,944
Error Correction		-	220	220
Net result for 2008-09		-	1,770	1,770
Total comprehensive result for 2008-09		-	1,770	1,770
Balance as at 30 June 2009		48,566	135,368	183,934
Net result for 2009-10		-	(863)	(863)
Total comprehensive result for 2009-10		-	(863)	(863)
Balance at 30 June 2010		48,566	134,505	183,071

All changes in equity are attributable to the SA Government as owner

The above statement should be read in conjunction with the accompanying notes

dev -

Museum Board

Statement of Cash Flows
For the year ended 30 June 2010

	Note	2010 \$'000	2009 \$'000
Cash flows from operating activities			
Cash outflows			
Staff benefits		(6,205)	(5,654)
Supplies and services		(3,108)	(2,846)
Accommodation and facilities		(2,531)	(2,107)
Grants		(104)	(133)
Cash used in operations		(11,948)	(10,740)
Cash inflows			
Grants		640	764
Sale of goods		36	10
Fees and charges		508	613
Donations and bequests		1,084	239
Sponsorships		268	527
Interest and investment		152	188
Recoveries		525	413
Other		194	353
Cash generated from operations		3,407	3,107
Cash flows from SA Government			
Recurrent operating grant		8,867	8,373
Capital grant		435	2,662
Cash generated from SA Government		9,302	11,035
Net cash provided by operating activities	23	761	3,402
Cash flows from investing activities			
Cash outflows			
Purchases of heritage collections		(29)	-
Purchases of property, plant and equipment		(3,181)	(2,215)
Purchases of investments		(1,617)	-
Cash used in investing activities		(4,827)	(2,215)
Cash inflows			
Proceeds from sale of investments		233	-
Proceeds from Debtor		-	1
Cash generated from investing activities		233	1
Net cash used in investing activities		(4,594)	(2,214)
Net (decrease) increase in cash		(3,833)	1,188
Cash at the beginning of the financial year		4,677	3,489
Cash at the end of the financial year	23	844	4,677

The above statement should be read in conjunction with the accompanying Notes.

Museum Board

Note 1. Objectives of the Museum Board

The functions of the Museum Board (the Board), as prescribed under the *South Australian Museum Act 1976*, are as follows:

- Undertake the care and management of the Museum;
- Manage all lands and premises vested in, or placed under the control of, the Board;
- Manage all funds vested in, or under the control of the Board and to apply those funds in accordance with the terms and conditions of any instrument of trust or other instrument affecting the disposition of those moneys;
- Carry out, or promote, research into matters of scientific and historical interest;
- Accumulate and care for objects and specimens of scientific or historical interest;
- Accumulate and classify data in regard to any such matters;
- Disseminate information of scientific or historical interest; and
- Perform any other functions of scientific, educational or historical significance that may be assigned to the Board by regulation.

Note 2. Summary of significant accounting policies

2.1 Statement of compliance

The financial statements are general purpose financial statements. The accounts have been prepared in accordance with relevant Australian Accounting Standards and Treasurer's Instructions and Accounting Policy Statements promulgated under the provision of the *Public Finance and Audit Act 1987*.

Except for Australian Accounting Standard, AASB 2009-12, which the Board has early adopted, Australian Accounting Standards and Interpretations that have recently been issued or amended but are not yet effective have not been adopted by the Board for the reporting period ending 30 June 2010. These are outlined in Note 3.

2.2 Basis of preparation

The preparation of the financial statements requires:

- the use of certain accounting estimates and requires management to exercise its judgement in the process of applying the Board's accounting policies. The areas involving a higher degree of judgement or where assumptions and estimates are significant to the financial statements, these are outlined in the applicable Notes; and
- compliance with Accounting Policy Statements issued pursuant to section 41 of the *Public Finance and Audit Act 1987*. In the interest of public accountability and transparency the Accounting Policy Statements require the following Note disclosures, which have been included in the financial statements:
 - a) income, expenses, financial assets and liabilities where the counterparty/transaction is with an entity within the SA Government as at reporting date, classified according to their nature. A threshold of \$100 000 for separate identification of these items applies;
 - b) expenses incurred as a result of engaging consultants;
 - c) staff targeted voluntary separation package information;
 - d) staff whose normal remuneration is \$100 000 or more (within \$10 000 bandwidths) and the aggregate of the remuneration paid or payable or otherwise made available, directly or indirectly, by the entity to those staff; and
 - e) board/committee member and remuneration information, where a board/committee member is entitled to receive income from membership other than a direct out-of-pocket reimbursement.

The Board's Statement of Comprehensive Income, Statement of Financial Position and Statement of Changes in Equity have been prepared on an accrual basis and are in accordance with historical cost convention, except for certain assets that were valued in accordance with the valuation policy applicable.

The Statement of Cash Flows has been prepared on a cash basis.

The financial statements have been prepared based on a twelve month operating cycle and are presented in Australian currency.

The accounting policies set out below have been applied in preparing the financial statements for the year ended 30 June 2010 and comparative information presented.

2.3 Source of Funds

The Board's principal source of funds consists of grants from the State Government. In addition, the Board also receives monies from sales, admissions, donations, bequests, sponsorships and other receipts, and uses the monies for the achievement of its objectives.

Museum Board

2.4 Income and Expenses

Income and expenses are recognised in the Board's Statement of Comprehensive Income to the extent it is probable that the flow of economic benefits to or from the entity will occur and can be reliably measured. Income and expenses have been classified according to their nature, and have not been offset unless required or permitted by a specific Accounting Standard, or where offsetting reflects the substance of the transaction or other event.

Income

Income from the sale of goods is recognised upon the delivery of goods to customers. Interest revenue is recognised on a proportional basis taking into account the interest rates applicable to the financial assets. Investment income is recognised when the Board obtains control over the funds. Income from the rendering of a service is recognised upon the delivery of the service to the customers. Government grants are recognised as income in the period in which the Board obtains control over the grants.

Resources received free of charge

Resources received free of charge are recorded as income and expenditure in the Statement of Comprehensive Income at their fair value.

Under an arrangement with Arts SA and Artlab Australia, divisions of the Department of the Premier and Cabinet, Artlab Australia receives SA Government appropriation to perform conservation services on the Board's heritage collections. The value of this work performed is recognised as resources received free of charge in income and a corresponding amount included as conservation work expenditure in supplies and services (Note 6).

Under an arrangement with the Services Division of the Department of the Premier and Cabinet, financial services and human resources are provided free of charge to the Board. The value of these services is recognised as resources received free of charge in income and a corresponding amount included as a business services charge in supplies and services (Note 6).

2.5 Current and non-current classification

Assets and liabilities are characterised as either current or non-current in nature. The Board has a clearly identifiable operating cycle of twelve months. Assets and liabilities that will be realised as part of the normal operating cycle have been classified as current assets or current liabilities. All other assets and liabilities are classified as non-current.

2.6 Cash

Cash in the Statement of Financial Position includes cash at bank and cash on hand.

For the purposes of the Statement of Cash Flows, cash is defined above. Cash is measured at nominal value.

2.7 Receivables

Receivables include amounts receivable from trade, prepayments and other accruals.

Trade receivables arise in the normal course of selling goods and services to other government agencies and the public. Trade receivables are generally receivable within 30 days after the issue of an invoice or the goods/services have been provided under a contractual arrangement.

The ability to collect trade receivables is reviewed on an ongoing basis. Debts that are known to be uncollectible are written off when identified. An allowance for doubtful debts is raised when there is objective evidence that the Board will not be able to collect the debt.

2.8 Investments

Investments are brought to account at cost in accordance with Accounting Policy Framework IV *Financial Asset and Liability Framework* APS 2.1.

2.9 Non-current asset acquisition and recognition

The cost method of accounting is used for the initial recording of all acquisitions of assets. Cost is determined as the fair value of the assets given the consideration plus costs incidental to the acquisition. Assets donated during the year have been brought to account at fair value.

All non-current assets with a value of \$10,000 or greater are capitalised.

Componentisation of complex assets is only performed when the complex asset's fair value at the time of acquisition is greater than \$5 million for infrastructure assets and \$1 million for other assets.

2011

2.10 Valuation of non-current assets

All non-current assets are valued at written down current cost (a proxy for fair value) and a revaluation of non-current assets or a group of assets is only performed when its fair value at the time of acquisition is greater than \$1 million and estimated useful life is greater than three years.

Land and buildings are re-valued every 5 years, and heritage collections are re-valued every 5 years. Previously, land and buildings were re-valued every 3 years, but in 2009-10 the Board's Asset Management Policy was revised, and the revaluation period for land and buildings was changed from 3 to 5 years. However, if at any time management considers the carrying amount of an asset materially differs from its fair value, then the asset will be revalued regardless of when the last valuation took place. Non-current assets that are acquired between revaluations are held at cost until the next valuation, where they are revalued to fair value.

Any revaluation increment is credited to the asset revaluation surplus, except to the extent that it reverses a revaluation decrement of the same asset class previously recognised as an expense, in which case the increase is recognised as income.

Any revaluation decrement is recognised as an expense, except to the extent that it offsets a previous revaluation increase of the same asset class, in which case the decrease is debited directly to the asset revaluation surplus to the extent of the credit balance existing in the revaluation surplus for that asset class.

Upon revaluation, the accumulated depreciation has been restated proportionately with the change in gross carrying amount of the asset so that the carrying amount, after revaluation, equals its revalued amount.

Upon disposal or de-recognition, any revaluation surplus relating to that asset is transferred to retained earnings.

Land and buildings

Land and buildings have been valued at fair value. Valuations of land and buildings were determined as at 30 June 2008 by the Australian Valuation Office.

Plant and equipment

Plant and equipment, including computer equipment, on acquisition has been deemed to be held at fair value.

Heritage collections

The Board's collections were revalued as at 30 June 2006 using the valuation methodology outlined below in accordance with fair value principles adopted under Australian Accounting Standard AASB 116 *Property, Plant and Equipment*. These valuations were undertaken by both external valuers and internal specialists.

The collections were broadly valued on the following basis:

Collection	Method of valuation
Heritage collections	Net market valuation
Natural History collections	Cost of recovery

Heritage collection status applies to those collections where an established market exists. The net market valuation applied has been assessed either by valuation undertakings by staff and valuers or by applying valuations determined under the Taxation Incentives for the Arts Scheme.

Natural History collections have been valued at fair value on the basis of the cost of fieldwork, preparation and documentation to replace the material in its present condition.

Internal valuations were carried out by staff specialists in their related fields. These valuations were based on a knowledge of the particular collections, an understanding of valuation techniques and the markets that exist for the collection items. Independent external valuers were engaged to review the methodology adopted for valuation to verify the valuations applied by internal specialists via sampling techniques, and to carry out independent valuations where required.

Heritage collections deemed to have market value are Australian Ethnology, Foreign Ethnology, Malacology, Butterflies, Industrial History Collection, Mineralogy, Museum Library and Rare Books.

Natural History collections valued at cost of recovery are the Australian Biological Tissue Bank, the Australian Helminthological Collection, Entomology, Arachnology, Marine Invertebrates, Ichthyology, Herpetology, Ornithology and Mammalogy.

The external valuations were carried out by the following recognised industry experts

Collection	Industry Expert
Australian Ethnology	Macaulay Partners
Museum Library and Rare Books	M Treloar and P Horn
Malacology (Marine Invertebrates)	W Rumble
Butterflies (Terrestrial Invertebrates)	L Mound
Mammalogy	R Schodde
Australian Polar Collection	M Treloar

Collections deemed to be culturally sensitive, including human remains or items which are secret and sacred to Aboriginal communities, have not been included within the current valuation and are deemed to be at zero valuation. These collections are Human Biology, Secret Sacred, Archives, Palaeontology and Archaeology.

Rem

Museum Board

2.11 Impairment of assets

All non-current assets are tested for indication of impairment at each reporting date. Where there is an indication of impairment, the recoverable amount is estimated. An amount by which the asset's carrying amount exceeds the recoverable amount is recorded as an impairment loss.

For re-valued assets an impairment loss is offset against the asset revaluation surplus.

2.12 Depreciation of non-current assets

Depreciation is calculated on a straight-line basis to write off the net cost or revalued amount of each non-current asset over its expected useful life, except for land and heritage collections, which are not depreciable. Estimates of remaining useful lives are made on a regular basis for all assets, with annual reassessments for major items.

The expected useful lives are as follows:

<u>Class of Asset</u>	<u>Useful Life (Years)</u>
Buildings and improvements	20-100
Plant and equipment:	
Exhibition	10
Commercial Vehicles	20-25
Other	5-15
Computer equipment	3-5

Exhibitions with a life of less than one year are expensed.

Heritage collections are kept under special conditions so that there is no physical deterioration and they are anticipated to have very long and indeterminate useful lives. No amount for depreciation has been recognised, as their service potential has not, in any material sense, been consumed during the reporting period.

2.13 Payables

Payables include creditors, accrued expenses and staff on-costs.

Creditors and accrued expenses represent goods and services provided by other parties during the period that are unpaid at the end of the reporting period. All payables are measured at their nominal amount and are normally settled within 30 days from the date of the invoice or date the invoice is first received.

Staff on-costs include superannuation contributions and payroll tax with respect to outstanding liabilities for salaries and wages, long service leave and annual leave.

2.14 Staff benefits

These benefits accrue for staff as a result of services provided up to the reporting date that remain unpaid. Long-term staff benefits are measured at present value and short-term benefits are measured at nominal amounts.

No provision has been made for sick leave as all sick leave is non-vesting and the average sick leave taken in future years by staff is estimated to be less than the annual entitlement of sick leave.

(i) Salaries, Wages and Annual Leave

Liabilities for salaries, wages and annual leave have been recognised as the amount unpaid at the reporting date at remuneration rates current at reporting date. The annual leave liability is expected to be payable within twelve months and is measured at the undiscounted amount expected to be paid.

(ii) Long Service Leave

A liability for long service leave is recognised after a staff member has completed 5.5 years of service. An actuarial assessment of long service leave, undertaken by the Department of Treasury and Finance based on a significant sample of employees throughout the South Australian public sector, determined that the liability measured using the short hand method was not materially different from the liability measured using the present value of expected future payments. This calculation is consistent with the Board's experience of staff retention and leave taken.

(iii) On-Costs

Staff benefit on-costs (payroll tax, workers compensation and superannuation) are recognised separately under payables.

(iv) Superannuation

The Board makes contributions to several State Government and externally managed superannuation schemes. These contributions are treated as an expense when they occur. There is no liability for payments to beneficiaries as they have been assumed by the respective superannuation schemes. The only liability outstanding at balance date relates to any contributions due but not yet paid to the relevant superannuation schemes. The Department of Treasury and Finance centrally recognises the superannuation liability, for the schemes operated by the State Government, in the whole-of-government financial statements.

Re

2.15 Workers compensation provision

A liability has been reported to reflect unsettled workers compensation claims. The workers compensation provision is based on an actuarial assessment performed by the Public Sector Workforce Relations Division of the Department of the Premier and Cabinet.

2.16 Leases

The Board has entered into a number of operating lease agreements for accommodation, vehicles and office equipment where the lessors effectively retain all of the risks and benefits incidental to ownership of the items held under the operating leases. Operating lease payments are representative of the pattern of benefits derived from the leased assets and accordingly are charged to the Statement of Comprehensive Income on a straight-line basis over the lease term.

2.17 Comparative Information

The presentation and classification of items in the financial statements are consistent with prior periods except where specific Accounting Standards and/or Accounting Policy Statements has required a change.

Where presentation or classification of items in the financial statements have been amended, comparative figures have been adjusted to conform to changes in presentation or classification in these financial statements unless impracticable.

The restated comparative amounts do not replace the original financial statements for the preceding period.

2.18 Taxation

The Board is not subject to income tax. The Board is liable for payroll tax, fringe benefits tax, goods and services tax (GST) and the emergency services levy.

Income, expenses and assets are recognised net of the amount of GST. The amount of GST incurred by the Board as a purchaser that is not recoverable from the Australian Taxation Office is recognised as part of the cost of acquisition of an asset or part of an item of expense.

The net GST receivable/payable to the Australian Taxation Office is not recognised as a receivable/payable in the Statement of Financial Position as the Board is a member of an approved GST group of which Arts SA, a division of the Department of the Premier and Cabinet, is responsible for the remittance and collection of GST. As such, there are no cash flows relating to GST transactions with the Australian Taxation Office in the Statement of Cash Flows.

2.19 State Government funding

The financial statements are presented under the assumption of ongoing financial support being provided to the Board by the State Government.

2.20 Rounding

All amounts in the financial statements and accompanying notes have been rounded to the nearest thousand dollars (\$'000).

2.21 Insurance

The Board has arranged, through SAICORP, a division of the SA Government Financing Authority, to insure all major risks of the Board. The excess payable is fixed under this arrangement.

2.22 Unrecognised contractual commitments and contingent assets and liabilities

Commitments include those operating, capital and outsourcing commitments arising from contractual or statutory sources and are disclosed at their nominal value.

Contingent assets and contingent liabilities are not recognised in the Statement of Financial Position, but are disclosed by way of a Note and, if quantifiable, are measured at nominal value.

Unrecognised contractual commitments and contingencies are disclosed net of the amount of GST recoverable from, or payable to the Australian Taxation Office. If GST is not payable to, or recoverable from the Australian Taxation Office, the commitments and contingencies are disclosed on a gross basis.

Note 3. New and revised Accounting Standards

Details of the impact, where significant, on the Board's financial statements from new and amended Australian Accounting Standards that are applicable for the first time in 2009-10 are detailed below.

Except for AASB 2009-12, which the Board has early-adopted, the Australian Accounting Standards and Interpretations that have recently been issued or amended but are not yet effective, have not been adopted by the Board for the period ending 30 June 2010. The Board has assessed the impact of the new and amended Standards and Interpretations and considers there will be no impact on the accounting policies or the financial statements of the Board.

4. Staff benefits

	2010	2009
Salaries and wages	\$'000	\$'000
Long service leave	5,000	4,641
Annual leave	179	188
Staff on-costs - superannuation	117	95
Staff on-costs - other	588	590
TVSP Payments	275	259
Board fees	149	-
Other staff related expenses	34	27
	32	7
Total Staff benefits	6,374	5,807

Targeted voluntary separation packages

	2010	2009
	\$'000	\$'000
Amount paid to these employees:		
TVSPs	149	-
Annual Leave and long service leave paid during the period	36	-
	185	-
Less: Recovery from the Department of Treasury and Finance	(149)	-
Net cost to Museum	36	-

Number of employees who were paid TVSPs during the reporting period

2

Remuneration of staff

The number of employees who received remuneration of \$100,000 or more during the year, falls within the following bands:

	2010	2009
	No. of staff	No. of staff
\$100 000 to \$109 999	4	2
\$110 000 to \$119 999	3	1
\$120 000 to \$129 999	2	2
\$160 000 to \$169 999	1	1
	10	6

The table includes all staff who received remuneration of \$100 000 or more during the year. Remuneration of staff reflects all costs including salaries and wages, superannuation contributions, fringe benefits tax and other salary sacrifice benefits. The total remuneration received by these staff members for the year was \$1.2 million (\$748 000).

5. Remuneration of board and committee members

Members that were entitled to receive remuneration for membership during the 2009-10 financial year were:

Museum Board (8 Members)

Aboriginal Advisory Committee (5 Members)

Museum Board

Mr J Ellice-Flint (Chairperson)
Mr A Simpson
Mr P Ah Chee (term expired 13th Dec 2009)
Mr R Edwards
Dr S Carthew
Ms E D Perry
Ms N Buddle (term expired 13th Dec 2009)
Ms N Stott Despoja (appointed 24th Sept 2009)

Aboriginal Advisory Committee

Mr P Ah Chee
Mr L O'Brien
Ms L O'Donoghue
Mr M Turner
Dr S Miller
Ms E D Perry

The number of members whose remuneration received or receivable falls within the following bands:

	2010	2009
\$0 - \$9,999	12	11
\$10,000 - \$19,999	1	2
	13	13

Remuneration of members reflects all costs of performing board/committee member duties including sitting fees. The total remuneration received by members was \$34 000 (\$27 000).

Amounts paid to a superannuation plan for board/committee members were \$1 650 (\$2 000).

Related party disclosures

Board members or their related entities have transactions with the Board that occur within a normal customer or supplier relationship on terms and conditions no more favorable than those with which it is reasonably expected the entity would have adopted if the transactions were undertaken with any other entity at arm's length in similar circumstances.

12/11/10

6 Supplies and services

	2010 \$'000	2009 \$'000
Supplies and services provided by entities external to the SA Government		
Cost of goods sold	-	6
Marketing	302	249
Administration	219	240
IT services and communications	161	86
Maintenance	38	52
Collections	42	41
Exhibitions	78	133
Research	685	619
Travel and accommodation	132	170
Contractors	185	153
Motor vehicle expenses	21	16
Minor equipment	92	70
Fees	175	158
Consultants	35	27
Entertainment	41	26
Other	217	182
Total supplies and services - non SA Government entities	2,423	2,228
Supplies and services provided by entities within the SA Government		
Insurance and risk management	343	325
Marketing	-	2
IT services and communications	190	161
Maintenance	42	24
Artlab conservation work	284	287
Business services charge	143	175
Collections	-	11
Research	45	48
Travel and accommodation	-	4
Motor vehicle expenses	45	60
Minor equipment	-	4
Other	64	42
Total supplies and services - SA Government entities	1,156	1,143
Total Supplies and services	3,579	3,371

Consultants

The number and dollar amount of consultancies paid/payable (included in Consultants expense shown above) fell within the following bands:

	2010 Number	2009 Number	2010 \$'000	2009 \$'000
Below \$10,000	1	4	5	14
Between \$10,000 and \$50,000	2	1	30	13
Total paid/payable to consultants engaged	3	5	35	27

External auditor's remuneration

External auditor's remuneration represents amounts paid/payable to the Auditor-General's Department for audit services. No other services were provided by the Auditor-General.

	2010 \$'000	2009 \$'000
Audit fees paid/payable to the Auditor-General's Department	27	26
Total: External auditor's remuneration	27	26

2207 /

7 Accommodation and facilities

	2010	2009
	\$'000	\$'000
Accommodation and facilities provided by entities external to the SA Government		
Accommodation	294	331
Facilities	329	198
Security	785	798
Total accommodation and facilities – Non SA Government entities	1,408	1,327
Accommodation and facilities provided by entities within the SA Government		
Accommodation	334	395
Facilities	732	547
Security	10	2
Total accommodation and facilities – SA Government entities	1,076	944
Total accommodation and facilities	2,484	2,271

8 Depreciation and amortisation

	2010	2009
	\$'000	\$'000
Buildings and improvements	1,312	1,312
Plant and equipment	292	53
Computer equipment	-	6
Total depreciation	1,604	1,371

9 Grants

	2010	2009
	\$'000	\$'000
State Government grants	20	-
Other general grants	314	342
Commonwealth grants	207	358
Total grants	541	700

10 Fees and charges

	2010	2009
	\$'000	\$'000
Admissions	172	335
Functions	69	83
Fees for Service	141	107
Other	101	198
Total fees and charges	483	723

11 Sponsorships

	2010	2009
	\$'000	\$'000
Sponsorships received/receivable from entities external to the SA Government		
Cash sponsorships	392	388
In-kind sponsorships	30	15
Total sponsorships	422	403

12 Interest and investment income

	2010	2009
	\$'000	\$'000
Interest and investment income from entities external to the SA Government	85	-
Interest on deposit accounts - from entities within the SA Government	93	174
Total interest income	178	174

13 Net loss from disposal of non-current assets

	2010	2009
	\$'000	\$'000
Investments		
Proceeds from the sale of investments	233	-
Less: Net book value of investments	(251)	-
Net loss from sale of investments	(18)	-
Total assets		
Total proceeds from disposal	233	-
Less: Total net book value of investments	(251)	-
Total net loss from disposal of non-current assets	(18)	-

Rev -

14 Resources received free of charge

	2010 \$'000	2009 \$'000
Resources received free of charge from entities within the SA Government		
Business Services Charge		
Other	143	175
Total resources received free of charge – SA Government entities	284	287
Total resources received free of charge	427	462

15 Other income

	2010 \$'000	2009 \$'000
Other income received/receivable from entities external to the SA Government		
Rent	-	2
Exhibition Hire	39	10
Other	139	161
Total other income – Non SA Government entities	178	173
Other income received/receivable from entities within the SA Government		
Exhibition Hire	-	4
Other	5	11
Total other income – SA Government entities	5	15
Total other income	183	188

16 Receivables

	2010 \$'000	2009 \$'000
Receivables from external to the SA Government entities		
Receivables	369	506
Accrued Income	28	-
Total receivables from Non SA Government entities	397	506
Receivables from entities within the SA Government		
Receivables	119	17
Accrued Income	8	10
Total receivables from SA Government entities	127	27
Total receivables	524	533

Interest rate and credit risk:

Receivables are raised for all goods and services provided for which payment has not been received. Receivables are normally settled within 30 days. Trade receivables and accrued income are non-interest bearing. It is not anticipated that counterparties will fail to discharge their obligations. The carrying amount of receivables approximates net fair value due to being receivable on demand. In addition, there is no concentration of credit risk.

a) Maturity analysis of payables – refer Note 27

b) Categorisation of financial instruments and risk exposure information – refer Note 27

17 Property, plant and equipment

	2010	2009
	\$'000	\$'000
Land, buildings and improvements		
Land at valuation		
Buildings and improvements at valuation	7,440	7,440
Less: Accumulated depreciation	58,693	58,693
Total: Land, buildings and improvements	(34,065)	(32,753)
	32,068	33,380
Plant and equipment		
At cost (deemed fair value)		
Work in progress	7,157	1,638
Less: Accumulated depreciation	-	2,912
	(1,504)	(1,278)
Total: Plant and equipment		
	5,653	3,272
Computer equipment		
At cost (deemed fair value)		
Less: Accumulated depreciation	-	47
Total: Computer equipment		(46)
		1
Total: Property, plant and equipment	37,721	36,653

RECONCILIATION OF PROPERTY, PLANT AND EQUIPMENT
2009-10

	Land	Buildings and improvements	Work in progress	Plant and equipment	Computer equipment	Total tangible assets
	\$'000	\$'000	\$'000	\$'000	\$'000	\$'000
Carrying amount at 1 July 2009	7,440	25,940	2,912	360	1	36,653
Additions	-	-	2,577	98	-	2,675
Transfer out	-	-	-	(2)	(1)	(3)
Depreciation	-	(1,312)	-	(292)	-	(1,604)
Other changes	-	-	(5,489)	5,489	-	-
Carrying amount at 30 June 2010	7,440	24,628	-	5,653	-	37,721

RECONCILIATION OF PROPERTY, PLANT AND EQUIPMENT
2008-09

	Land	Buildings and improvements	Work in progress	Plant and equipment	Computer equipment	Total tangible assets
	\$'000	\$'000	\$'000	\$'000	\$'000	\$'000
Carrying amount at 1 July 2008	7,440	27,252	279	205	7	35,183
Additions	-	-	2,498	123	-	2,621
Adjustment to Opening Balance	-	-	220	-	-	220
Depreciation	-	(1,312)	-	(53)	(6)	(1,371)
Other changes	-	-	(85)	85	-	-
Carrying amount at 30 June 2009	7,440	25,940	2,912	360	1	36,653

Ren

18 Heritage collections

	2010			2009		
	At valuation	At cost	Total	At valuation	At cost	Total
	\$'000	\$'000	\$'000	\$'000	\$'000	\$'000
Social/Industrial History	239	-	239	239	-	239
Australian Aboriginal Ethnographic	21,340	29	21,369	21,112	-	21,112
Foreign Ethnology	7,035	-	7,035	7,027	-	7,027
Australian Polar Collection	3,744	-	3,744	3,744	-	3,744
Minerals	16,984	-	16,984	16,984	-	16,984
Malacology	4,110	-	4,110	4,110	-	4,110
Butterflies	35	-	35	35	-	35
Australian Biological Tissue Bank	7,352	-	7,352	7,352	-	7,352
Australian Helminthological Collection	11,727	-	11,727	11,727	-	11,727
Entomology	31,686	-	31,686	31,686	-	31,686
Arachnology	4,795	-	4,795	4,795	-	4,795
Marine Invertebrates	8,923	-	8,923	8,923	-	8,923
Ichthyology	1,819	-	1,819	1,819	-	1,819
Herpetology	4,200	-	4,200	4,200	-	4,200
Ornithology	8,939	-	8,939	8,939	-	8,939
Mammalogy	5,962	-	5,962	5,962	-	5,962
Fossil	719	-	719	719	-	719
Library	5,608	-	5,608	5,608	-	5,608
Total heritage collections	145,217	29	145,246	144,981	-	144,981

Reconciliation of carrying amounts of heritage collections

	2010			2009		
	Balance 1 July	Additions	Balance 30 June	Balance 1 July	Additions	Balance 30 June
	\$'000	\$'000	\$'000	\$'000	\$'000	\$'000
Social/Industrial History	239	-	239	239	-	239
Australian Aboriginal Ethnographic	21,112	257	21,369	20,895	217	21,112
Foreign Ethnology	7,027	8	7,035	7,027	-	7,027
Australian Polar Collection	3,744	-	3,744	3,744	-	3,744
Minerals	16,984	-	16,984	16,945	39	16,984
Malacology	4,110	-	4,110	4,110	-	4,110
Butterflies	35	-	35	35	-	35
Australian Biological Tissue Bank	7,352	-	7,352	7,352	-	7,352
Australian Helminthological Collection	11,727	-	11,727	11,727	-	11,727
Entomology	31,686	-	31,686	31,686	-	31,686
Arachnology	4,795	-	4,795	4,795	-	4,795
Marine Invertebrates	8,923	-	8,923	8,923	-	8,923
Ichthyology	1,819	-	1,819	1,819	-	1,819
Herpetology	4,200	-	4,200	4,200	-	4,200
Ornithology	8,939	-	8,939	8,939	-	8,939
Mammalogy	5,962	-	5,962	5,962	-	5,962
Fossil	719	-	719	719	-	719
Library	5,608	-	5,608	5,608	-	5,608
Carrying amount at 30 June	144,981	265	145,246	144,725	256	144,981

19 Investments

Investments with entities other than SAFA:		
Non-Current	2010	2009
	\$'000	\$'000
Shares, convertible notes and other investments in companies	1,366	-
Total non-current investments	1,366	-
Total investments	1,366	-

The market value of Investments as at 30 June 2010 is \$1.3 million.

Rev -

20 Payables

	2010	2009
	\$'000	\$'000
Current		
Creditors and accruals	217	667
Staff on-costs	130	117
Total current payables	347	784
Non-current		
Staff on-costs	111	108
Total non-current payables	111	108
Total payables	458	892
	2010	2009
	\$'000	\$'000
Payables to Non SA Government entities		
Creditors and accruals	176	655
Total payables – Non SA Government entities	176	655
Payables to SA Government entities		
Creditors and accruals	41	12
Staff on-costs	241	225
Total payables – SA Government entities	282	237
Total payables	458	892

As a result of an actuarial assessment performed by the Department of Treasury and Finance it was determined that the percentage of the proportion of long service leave, taken as leave, remains constant at 45%, and the average factor for the calculation of employer superannuation on-cost remains constant at 10.5%. These rates are used in the staff on-cost calculation.

Interest rate and credit risk

Creditors and accruals are raised for all amounts billed but unpaid. Sundry creditors are normally settled within 30 days. Staff on-costs are settled when the respective staff benefit that they relate to is discharged. All payables are non-interest bearing. The carrying amount of payables approximates net fair value due to the amounts being payable on demand.

a) *Maturity analysis of payables - refer Note 27*

b) *Categorisation of financial instruments and risk exposure information - refer Note 27*

21 Staff benefits

	2010	2009
	\$'000	\$'000
Current		
Annual Leave	513	453
Long Service Leave	235	215
Accrued Salaries and Wages	151	122
Total current staff benefits	899	790
Non-current		
Long Service Leave	1,115	1,089
Total non-current staff benefits	1,115	1,089

The total current and non-current staff expense (i.e. aggregate staff benefit plus related on costs) for 2009-10 is \$1 million and \$1.2 million respectively. As a result of an actuarial assessment undertaken by the Department of Treasury and Finance, the benchmark for the measurement of the long service leave liability has changed from the 2009 benchmark of 6.5 years to 5.5 years.

The salary inflation rate remains constant at 4%.

22. Provisions

Current	2010	2009
	\$'000	\$'000
Provision for workers compensation	37	36
Total: Provisions Current	<u>37</u>	<u>36</u>
Non-current	2010	2009
	\$'000	\$'000
Provision for workers compensation	121	103
Total non current provision	<u>121</u>	<u>103</u>
Total provision	<u>158</u>	<u>139</u>
Reconciliation of the provision for workers compensation		
Provision at the beginning of the financial year	139	152
Increase (decrease) in provision during the year	19	(13)
Provision for workers compensation at the end of the financial year	<u>158</u>	<u>139</u>

23. Cash flow reconciliation**Reconciliation of cash**

For the purposes of the Statement of Cash Flows, cash includes cash on hand and at bank. Cash at the end of the financial year as shown in the Statement of Cash Flows is reconciled to the items in the Statement of Financial Position as follows:

	2010	2009
	\$'000	\$'000
Deposits with Treasurer	833	4,666
Cash on hand	11	11
Cash as recorded in the Statement of Financial Position	<u>844</u>	<u>4,677</u>

Interest rate risk

Cash is recorded at its nominal amount. Interest is calculated based on the average daily balances of the interest bearing funds. The interest bearing funds of the Board are held in a Section 21 Interest Bearing Deposit Account titled the "Museum Board". Deposits with the Treasurer are bearing a floating interest rate between 2.85% and 4.07%.

Reconciliation of net cash provided by operating activities to net cost of providing services

Net cash provided by operating activities	761	3,402
Less revenues from SA Government	(9,302)	(11,035)
Add/(less) non-cash items:		
Depreciation and amortisation of property, plant and equipment	(1,604)	(1,371)
Donations of heritage collections	235	256
Transfers from property, plant and equipment	(3)	-
Net loss on sale of investments	(18)	-
Changes in assets and liabilities		
(Decrease) in receivables	(108)	(139)
Decrease (Increase) in payables	28	(174)
(Increase) in staff benefits	(135)	(217)
(Increase) decrease in provisions	(19)	13
Net cost of providing services	<u>(10,165)</u>	<u>(9,265)</u>

2011

24 Unrecognised contractual commitments

Operating lease commitments:

Commitments under non-cancellable operating leases at the reporting date not recognised as liabilities in the financial statements, are payable as follows:

	2010	2009
	\$'000	\$'000
Not later than one year	24	209
Later than one year but not later than five years	3	32
Total: Operating lease commitments	27	241

The operating lease commitments comprise:

Non-cancellable motor vehicle leases, with rental payable monthly in arrears. No contingent rental provisions exist within the lease agreements and no options exist to renew the leases at the end of their terms.

Capital commitments:

Capital commitments under contract at the reporting date, but not recognised as liabilities in the financial report, are payable as follows:

	2010	2009
	\$'000	\$'000
Not later than one year	-	2,600
Later than one year but not later than five years	573	-
Total: Capital commitments	573	2,600

Remuneration commitments:

Commitments for the payment of salaries and other remuneration under employment contracts in existence at the reporting date but not recognised as liabilities are payable as follows:

	2010	2009
	\$'000	\$'000
Not later than one year	171	221
Later than one year but not later than five years	139	294
Total: Remuneration commitments	310	515

Amounts disclosed include commitments arising from executive and other service contracts. The Board does not offer remuneration contracts greater than five years.

Other commitments:

	2010	2009
	\$'000	\$'000
Not later than one year	552	813
Later than one year but not later than five years	105	258
Total: Other commitments	657	1,071

The Board's other commitments are for agreements for security and cleaning.

Contingent rental provisions within the contracts require the minimum contract payments to be increased by variable operating costs and wage rises. Options exist to renew the contracts for another 12 months.

25 Contingent Assets and Liabilities

The Museum Board is not aware of any contingent assets or liabilities as at 30 June 2010.

26 Events after balance date

There are no known events after balance date that affect these financial statements in a material manner.

Ran

27 Financial instruments/Financial risk management

Table 27.1 Categorisation of financial instruments

Details of the significant accounting policies and methods adopted including the criteria for recognition, the basis of measurement, and the basis on which income and expenses are recognised with respect to each class of financial asset, financial liability and equity instrument are disclosed in Note 2 *Summary of Significant Accounting Policies*.

Category of financial asset and financial liability	Statement of Financial Position line item	Note	2010		2009	
			Carrying amount	Fair value	Carrying amount	Fair value
			\$'000	\$'000	\$'000	\$'000
Financial assets						
Cash and cash equivalents	Cash	23	844	844	4,677	4,677
Loans and receivables	Receivables ⁽¹⁾	16	524	524	533	533
	Investments	19	1,366	1,265	-	-
Financial liabilities						
Financial liabilities at cost	Payables ⁽¹⁾	20	217	217	667	667

⁽¹⁾ Receivable and payable amounts disclosed here exclude amounts relating to statutory receivables and payables. In government, certain rights to receive or pay cash may not be contractual and therefore in these situations, the requirements will not apply. Where rights or obligations have their source in legislation such as levy receivables/payables, tax equivalents, commonwealth tax, audit receivables/payables etc they would be excluded from the disclosure. The standard defines contract as enforceable by law. All amounts recorded are carried at cost (not materially different from amortised cost) except for staff on-costs which are determined via reference to the staff benefit liability to which they relate.

Credit risk

Credit risk arises when there is the possibility of the Board's debtors defaulting on their contractual obligations resulting in financial loss to the Board. The Board measures credit risk on a fair value basis and monitors risk on a regular basis.

The Board has minimal concentration of credit risk. The Board has policies and procedures in place to ensure that transactions occur with customers with appropriate credit history. The Board does not engage in high risk hedging for its financial assets.

Allowances for impairment of financial assets are calculated on past experience and current and expected changes in client credit rating. Currently the Board does not hold any collateral as security to any of its financial assets. Other than receivables, there is no evidence to indicate that the financial assets are impaired.

Table 27.2 Ageing analysis of Financial Assets

The following table discloses the ageing of financial assets past due:

Financial assets item	Overdue for < 30 days	Overdue for 30-60 days	Overdue for > 60 days	Total
	\$'000	\$'000	\$'000	\$'000
2010				
Not impaired Receivables	468	40	16	524
2009				
Not impaired Receivables	420	12	101	533

Re ✓

Table 27.3 Maturity analysis of financial assets and liabilities

The following table discloses the maturity analysis of financial assets and financial liabilities.

Financial statements item	Carrying amount	Contractual maturities		
		< 1 year	1-5 years	> 5 years
		1,000	1,000	1,000
2010				
Financial assets				
Cash	844	844	-	-
Receivables	524	515	9	-
Financial assets	1,366	-	-	1,366
Total financial assets	2,734	1,359	9	1,366
Financial liabilities				
Payables	217	217	-	-
Total financial liabilities	217	217	-	-
2009				
Financial assets				
Cash	4,677	4,677	-	-
Receivables	533	533	-	-
Total financial assets	5,210	5,210	-	-
Financial liabilities				
Payables	667	667	-	-
Total financial liabilities	667	667	-	-

2010

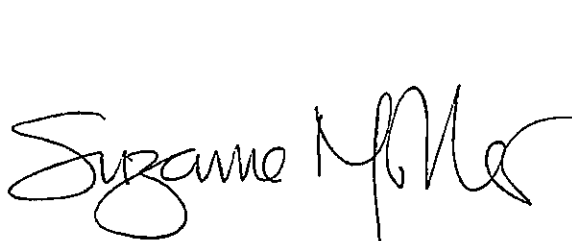
Museum Board

Certification of the Financial Statements


We certify that the attached general purpose financial statements for the Museum Board:

- comply with relevant Treasurer's Instructions issued under section 41 of the *Public Finance and Audit Act 1987*, and relevant Australian accounting standards;
- are in accordance with the accounts and records of the department; and
- present a true and fair view of the financial position of the Museum Board as at 30 June 2010 and the results of its operations and cash flows for the financial year.

We certify that the internal controls employed by the Museum Board for the financial year over its financial reporting and its preparation of the general purpose financial statements have been effective throughout the reporting.



Dr Suzanne Miller
Director
South Australian Museum
Sep 2010



John Ellice - Flint
Chairman
Museum Board
Sep 2010